

LAUNDRY JET

LJ SWIFT VUELO INSTALLATION GUIDE



*Laundry Jet
2001 Challenger Avenue
Oroville, CA, 95965, USA*

June 2026

Version 2.0

Rev 2.0

Document Revisions

Date	Version Number	Document Changes
1/15/2026	1.0 Rev	Swift Vuelo
6/8/2026	2.0 Rev	Swift Vuelo



FOR ADDITIONAL HELP INCLUDING INSTRUCTIONAL VIDEOS USE THE QR CODE ABOVE

Table of Contents

- 1 Introduction 4
- 2 Products 5
- 3 Pipe Installation Overview 6-9
 - 3 - Components & Tools 6
 - 3.1 - Pipe Installation Standards..... 7
 - 3.2 - Port Drop Installation 8
 - 3.3 - Port 90 Installation 9
- 4 Swift Vuelo Installation 10-20
 - 4.1 - Pipe Drop Install Components & Tools .. 10
 - 4.2 - Swift Vuelo Pipe drop installation 11
 - 4.3 - Installation Components and Tools12
 - 4.4 - Swift Vuelo Jet Pack Installation 13
 - 4.5 - Blower Pod Installation and Use Notes.. 14
 - 4.6 - Initial connection, test and setup..... 15
- 7 Warranty.....16
- 8 Engineering Prints 17-19
- 9 Top Installation Tips.....20-22

1. Introduction

All Laundry Jet installations are comprised of three elements usually completed in the following order:

1. Installation of the PVC pipe and fittings that connect the ports to the laundry room through the attic or crawlspace
2. The laundry room wall mounted or cabinet mount vacuum unit (Express, Swift or Swift Vuelos)
3. Laundry Jet Ports mounted in bedrooms, dressing rooms or bathrooms

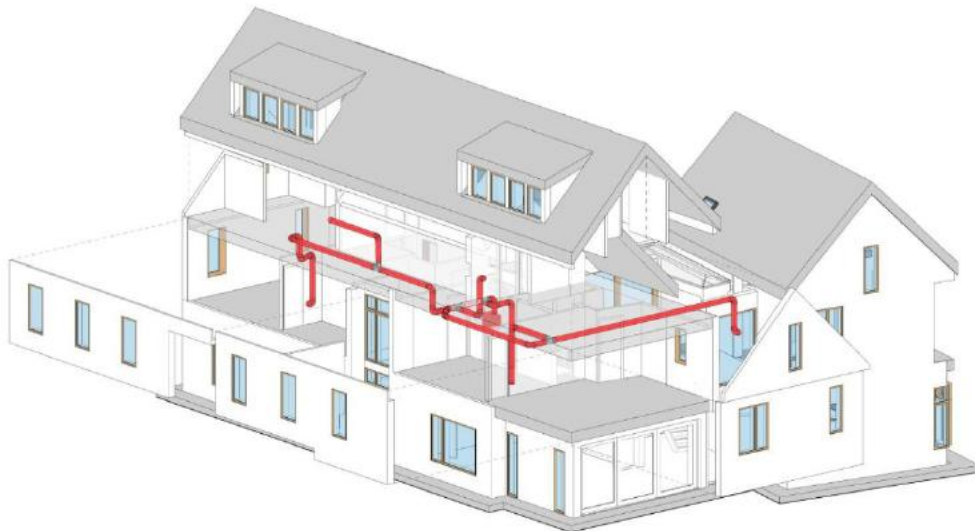
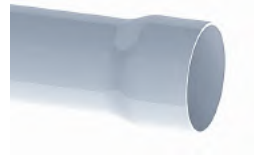
Vacuum Laundry Pipe

Laundry Jet specifies 6" SDR Schedule 35 White Solvent Weld PVC pipe and fittings. This piping is light weight to make install quick and easy. (US Pipe supplier link <https://bit.ly/10ftx6inch-pipe>)

PVC piping is designed to have a smooth transition in between fittings and connections which ensures that clothing, bedding and towels will travel smoothly to the laundry room.

Pipe & Fittings

6" SDR35 White Solvent Weld PVC pipe 10' x 6"
All Fittings are 6" SDR35 White Solvent Weld NO GASKETS



2. Product - Swift Vuelo

The **Laundry Jet Swift Vuelo** is our **mid-range, wall-mounted system**, supporting **up to four ports**. It features significant upgrades over its predecessor, including increased power and speed, improved accessibility and capacity, enhanced internal cabling, revised vent positioning, and an updated PCB.



Its distinctive design, clear viewing window, and high-gloss finish give the Swift Vuelo a modern, premium presence in any laundry room. **Top-mounted venting** allows the unit to be positioned closer to a left-hand corner wall, provided **12 inches of clearance to the ceiling** is maintained.

The Swift Vuelo **automatically empties after each short cycle** and is designed for frequent, everyday laundry loads—such as clothing, towels, and bedding—while excluding heavy or water-logged items like soaking towels, bulky jackets, or comforters.

Because the system moves laundry so quickly and efficiently, it operates for **very short cumulative run times**, making it highly efficient for the average family’s daily use.



The Swift Vuelo is compatible with all Laundry Jet ports using Cat 5/6 connectors.

Manual Lift Ports and iSlide Ports activate the system when opened and switch it off when closed. After inserting the final item, users should wait approximately 5 seconds to ensure all laundry has reached the Swift Vuelo unit before closing the port and stopping suction.

The iTap button-activated automatic port turns the system on with a button press.

- 2026 Vuelo models: press once
- Earlier and non-Vuelo models: press twice

This initiates an automated, timed cycle that allows clothes, towels, or bedding to be inserted before the user walks away. The Swift Vuelo then transports the laundry and automatically empties it in the laundry room, leaving the system ready for immediate reuse.

3. Pipe Installation - Components and Tools

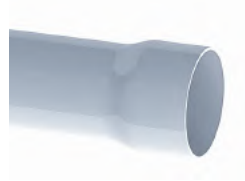
Components



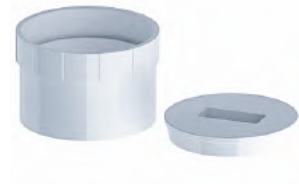
Assembly



6-inch Wye



6" x 10 ft SDR schd 35 Pipe



Pipe 6-inch Cleanout & Adapter

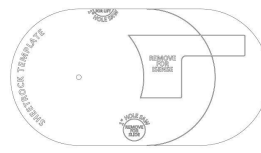
Port 90°



6 Inch 45 Degree Elbow



Swept Long 90



Sheetrock Template

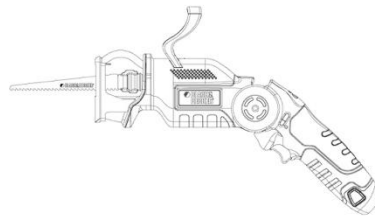


Cable Bundle

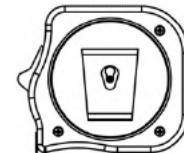
Tools



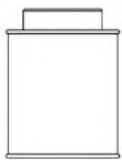
Cordless Drill



Sawzall



Tape Measure



PVC Glue

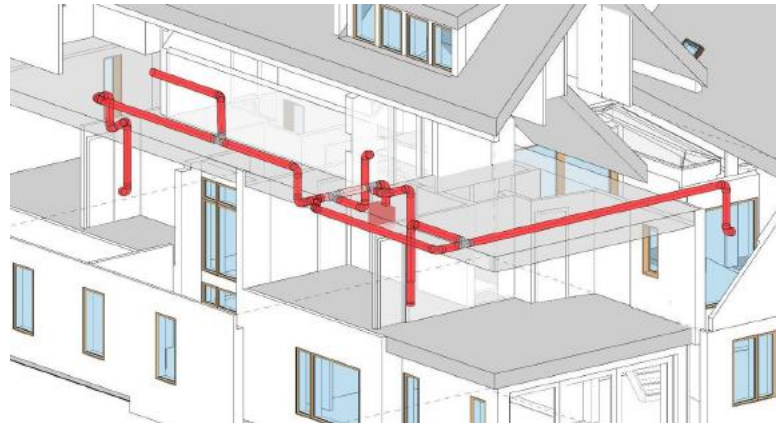


1" Wood Screw



Plumber's Metal Strapping Tape

3.1 Pipe Installation Standards



- All joints ideally should use a minimum entry angle of 45 degrees (space permitting with a break distance of 18 Inches (460 MM)). See Figure 1.
- Swept 90-degree turns are also allowed. See figure 2
- Pipe cuts must be straight and de burred before seating.
- Pipe must be completely seated in fitting connections.
- Seal all joints using standard PVC glue. Connections must be glued around 360 degrees to ensure maximum system performance.
- System must be strapped with “plumbers’ tape” or strapped every 6 feet. Port 90 must be strapped and secured prior to Port installation.
- Install Cleanout ports every 50 feet on angled runs. Straight trunk lines can run up to 100 feet with cleanouts at either end.
- Wye fittings are installed with airflow moving in a single direction toward the location of the Jet Pack unit. See figure 3. Never use “T” fittings

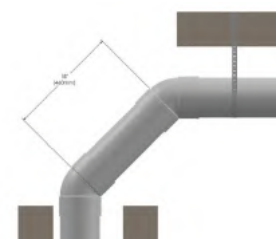


Figure 1



Figure 2

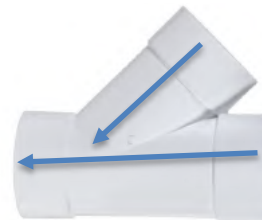
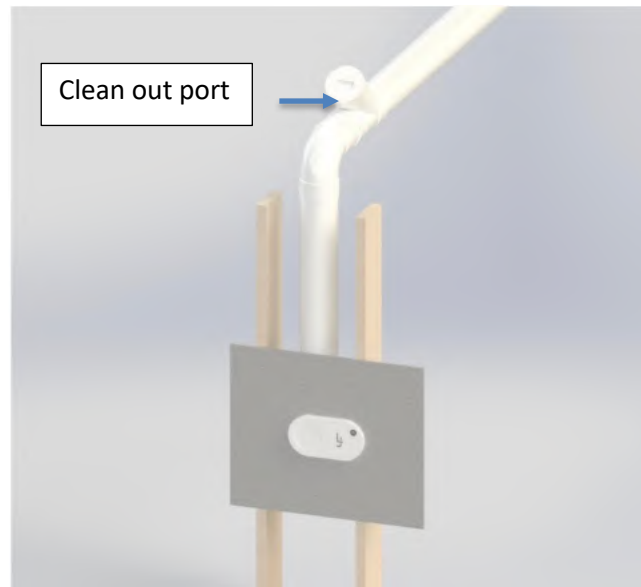


Figure 3

3.2 Port Drop installation



Port Drop Installation

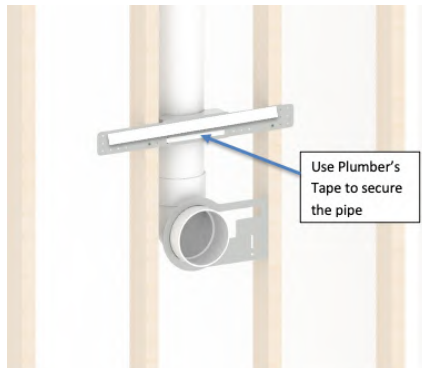
Mount the **Port 90** using the **Port Bracket**. Refer to **Page 9** for detailed Port 90 installation instructions.

For the port drop, use a **standard 6" SDR swept 90** fitting. Ensure the drop line is **blocked and securely strapped at the midpoint** for proper support.

Install **clean-out ports every 20–30 feet**, positioning them at **accessible locations** along the pipe run to allow for future maintenance.



3.3 Connecting the Port 90 to the Pipe



Port 90 installation New Construction

- Port 90 must be installed with front face of Port 90 flush with the finished face of interior wall.
- Port 90 must be installed on a plum horizontal port drop line.
- Use the Port 90 Mount Bracket and Plumbers Tape to align and secure the Port 90 to the frame (unless a remodel)

Port 90 installation in Existing Homes and Remodels

Installing a Laundry Jet in an existing home is surprisingly straightforward, even with finished walls. Since the system uses 6.25" (159 mm) piping, we utilize smart routing to maintain your home's aesthetic:

- **Closet Integration:** The most common method is placing the Port on a wall shared with a closet. This allows the pipe to run vertically through the closet interior and directly into the attic or crawl space.
- **Custom Chases:** In rooms without closets or across multiple floors, the pipe is neatly enclosed in a small, matching drywall "chase" (a slim decorative column) to keep it completely hidden.
- **Accessible Routing:** Main pipe runs are tucked away in attics or crawl spaces, ensuring the system remains discreet and easy to service without opening up your main living areas.

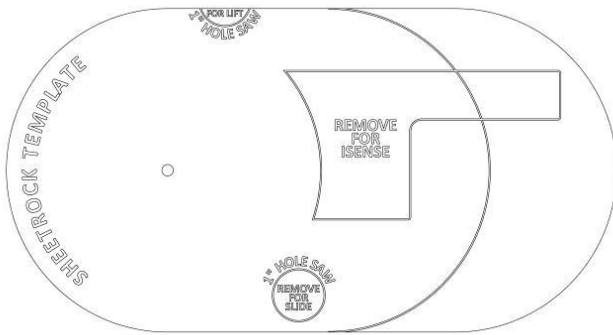
Quick Comparison Table

Installation Type	How We Handle the 6.25" Pipe
Closet-Backed Walls	Pipe runs vertically through the closet to the attic/crawl space.
Open Living Areas	Pipe is concealed in a neat, paint-matched drywall chase.
Multi-Story Homes	Vertical runs are boxed in; horizontal runs stay in the attic/basement.
New Construction	Routes are integrated directly into the architectural blueprints.



4.1 Components and Tools

Components



Sheetrock mount Template

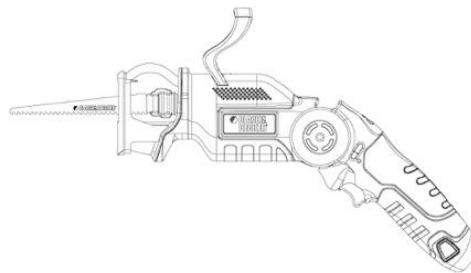


Metal Plumbers Tape

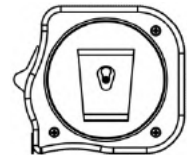
Tools



Cordless Drill



Sawzall



Tape Measure

4.2 Swift Vuelo Jet Pack - Pipe Drop Installation

- Install a standard 45 or swept 90 drop in the attic above from a Y connector on the main trunkline to create a vertical drop to the Swift Vuelo Unit
- Strap pipe securely at the attic to ceiling transition.
- Connect the down pipe to the collar on the top right of the Swift Vuelo
- Adjust pipe, (box it in or use clear pipe for aesthetics) and secure it for a true plumblines drop into the Jet Pack collar



4.3 Swift Vuelo Installation Components and Tools

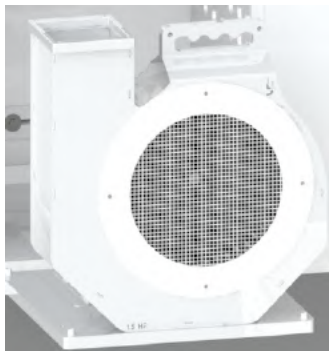
Components



Swift Vuelo Jet Pack with Pod



Swift Jet Pack Front Panel removed



Swift Jet Pack Blower Pod



4 port top RJ 45 Cat 5/6 Connector

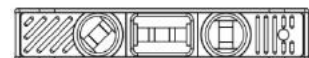
Tools



Cordless Drill



Stud Finder

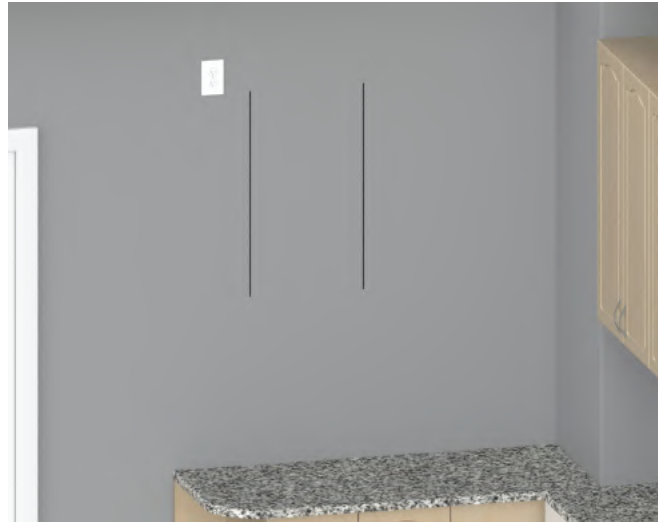


Level

4.4 Swift Mounting installation

Step 1

- Using a stud finder, locate mounting Stud positions on the wall. Mark Jet Pack installation position on the intended mount wall.
- Draw a vertical line down the center of your mount stud at the elevation of your desired position of the Swift Vuelo. Note it must be mounted at least 12 inches below the ceiling to allow enough venting space and avoid back pressure.



Step 2

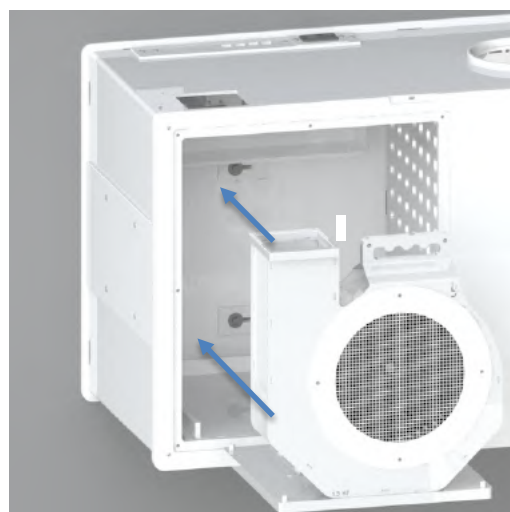
- Move the unit into position until you can see your mount line in the mount slots.
- Mark your mount hole position for predrill at 0.25" (6.5mm) Predrill your mount holes to 3" (76mm)
- Using a socket drive on your drill, set the jet pack into position and install the 4 provided 1/4"x 3" Lag screws.
- Check that the screws are tight but not over tightened to avoid damaging the back plate



4.5 Blower Pod Installation



- Remove the screws and the front panel(s) of the Swift Unit.



Blower Pod Installation

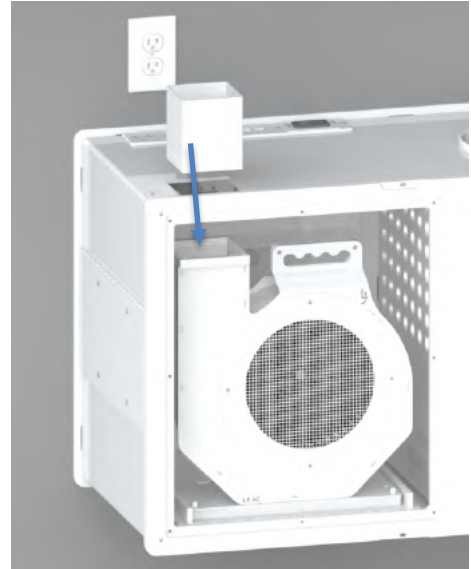
The Swift Blower Pod must be installed after installation of the Swift Vuelo unit.

Blower Pod Installation

- Remove the screws and the front panel of the Swift Unit.
- Align and position the blower pod between guide rails and slide into the unit until fully seated. Attach the cable at the top inside of the Laundry Jet Swift to the Pod connector to provide power.

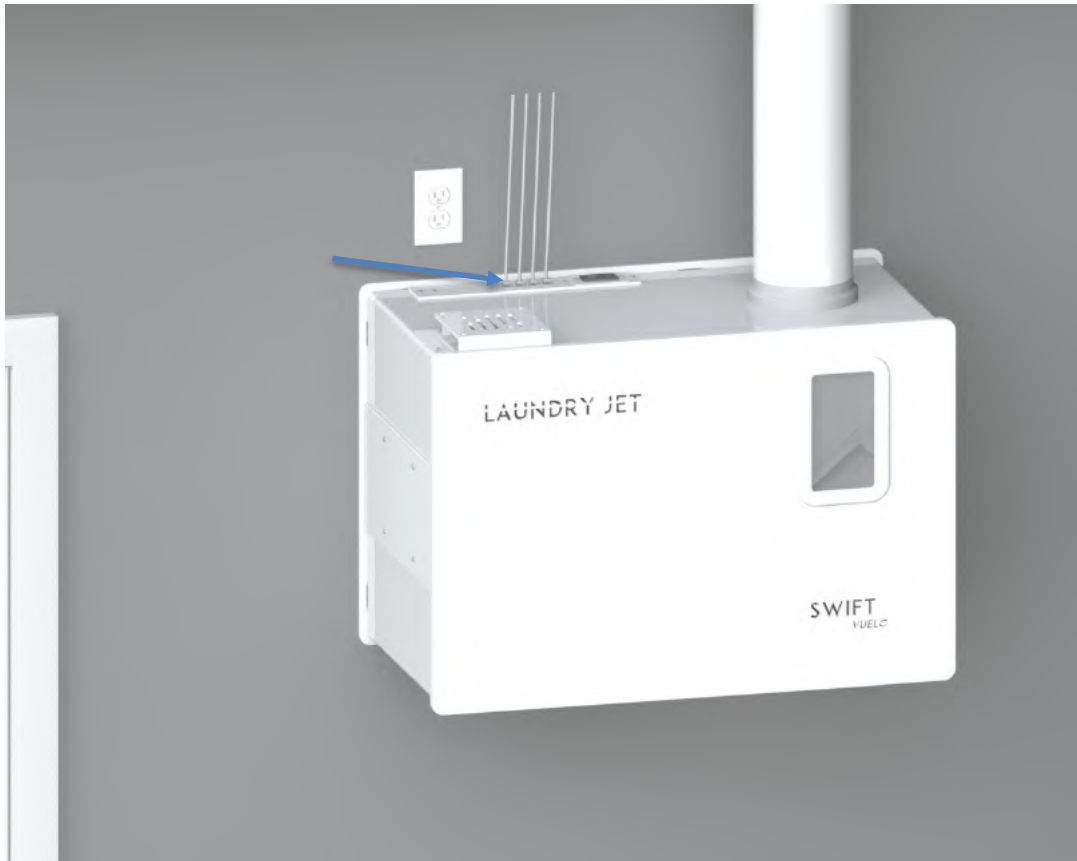
4" Square Connector Installation

- Install the 4" Square Connector thru the square cutout in the unit, and into the square flange of the Blower Pod. Ensure that the connector is fully seated and flush with the top face of the blower pod to let the air escape out the top and not into the machine.
- Screw the bottom plate of the Blower Pod to the Swift base
- Screw the Diffuser exhaust vent to the top of the exhaust cut out
- Re attach the Swift Front panel with the screws
- Align and position the blower pod between guide rails and slide into the unit until fully seated. Attach the cable at the top inside of the Laundry Jet Swift to the Pod connector to provide power.
- Reattach the front panels



4.6 Initial connection, Test and Setup

Test the lower discharge door. Make sure that the door moves freely without drag as it cycles open and close.



- Test all RJ45 connections prior to the next step
- Ensure that the Jet Pack is not plugged in
- Connect all the RJ45 cables as shown above to the top of the Swift Unit
- Make sure all ports are fitted and properly connected to the other end of the cables and ready to run
- Plug in your Jet Pack unit to the appropriate power supply. **The unit will perform a search set up sequence to find all ports that are connected so they must all be connected before powering on the Unit**
- Proceed to test that each port can activate the system. Wait until the system turns off after testing each port before testing the next one

WARRANTY

Lifetime Limited Warranty

Laundry Jet® is protected by a Limited Lifetime Warranty for the original purchaser, valid from the date of purchase, provided the system remains at its original installation location and the warranty registration form is completed at: <https://www.laundryjet.com/warranty>

Warranty Coverage

- Limited Lifetime Warranty on the metal body
- Three (3) Year Limited Warranty on the Jet Pack PosiFlow™ motor
- Three (3) Year Limited Warranty on Laundry Jet ports

This warranty covers defects in materials and workmanship under normal residential use, when installed and operated in accordance with Laundry Jet installation and operating instructions.

Exclusive Warranty

THIS WARRANTY IS THE SOLE AND EXCLUSIVE WARRANTY OF LIFEFLOW, LLC – LAUNDRY JET. ALL IMPLIED WARRANTIES, INCLUDING MERCHANTABILITY OR FITNESS FOR A PARTICULAR PURPOSE, ARE LIMITED IN DURATION TO THE APPLICABLE WARRANTY PERIOD STATED ABOVE.

Warranty Claims & Service

1. In the event of a suspected defect:
2. Contact the selling authorized Laundry Jet Dealer or Laundry Jet Technical Support.
3. The customer may be required to return the allegedly defective component to Laundry Jet or an authorized service facility for inspection.
4. Customer is responsible for shipping the product to Laundry Jet for evaluation.
5. If the product is confirmed defective, Laundry Jet will, at its sole option, repair, replace, or credit the defective part and cover the cost of return shipping.
6. If no defect is found, inspection, handling, and return shipping costs may apply.
7. Warranty service must be performed by an authorized Laundry Jet Dealer using genuine Laundry Jet replacement parts.

Parts-Only Coverage

This warranty covers parts only. Labor, removal, reinstallation, cabinetry, drywall, electrical work, and any associated service or repair costs are not covered.

Exclusions

This warranty does not cover pipe or fittings, normal wear and tear, commercial or institutional use, drywall dust, misuse, abuse, neglect, accidents, acts of God, improper installation, modification, alteration, improper operation, or failure to maintain the system.

Limitation of Liability

LIFEFLOW, LLC – LAUNDRY JET SHALL NOT BE LIABLE FOR ANY INCIDENTAL, CONSEQUENTIAL, OR SPECIAL DAMAGES ARISING FROM THE USE OR INABILITY TO USE THIS SYSTEM, EXCEPT WHERE PROHIBITED BY LAW.

Some states or provinces do not allow limitations on implied warranties or damages; therefore, these limitations may not apply to you.

Legal Rights & Geographic Scope

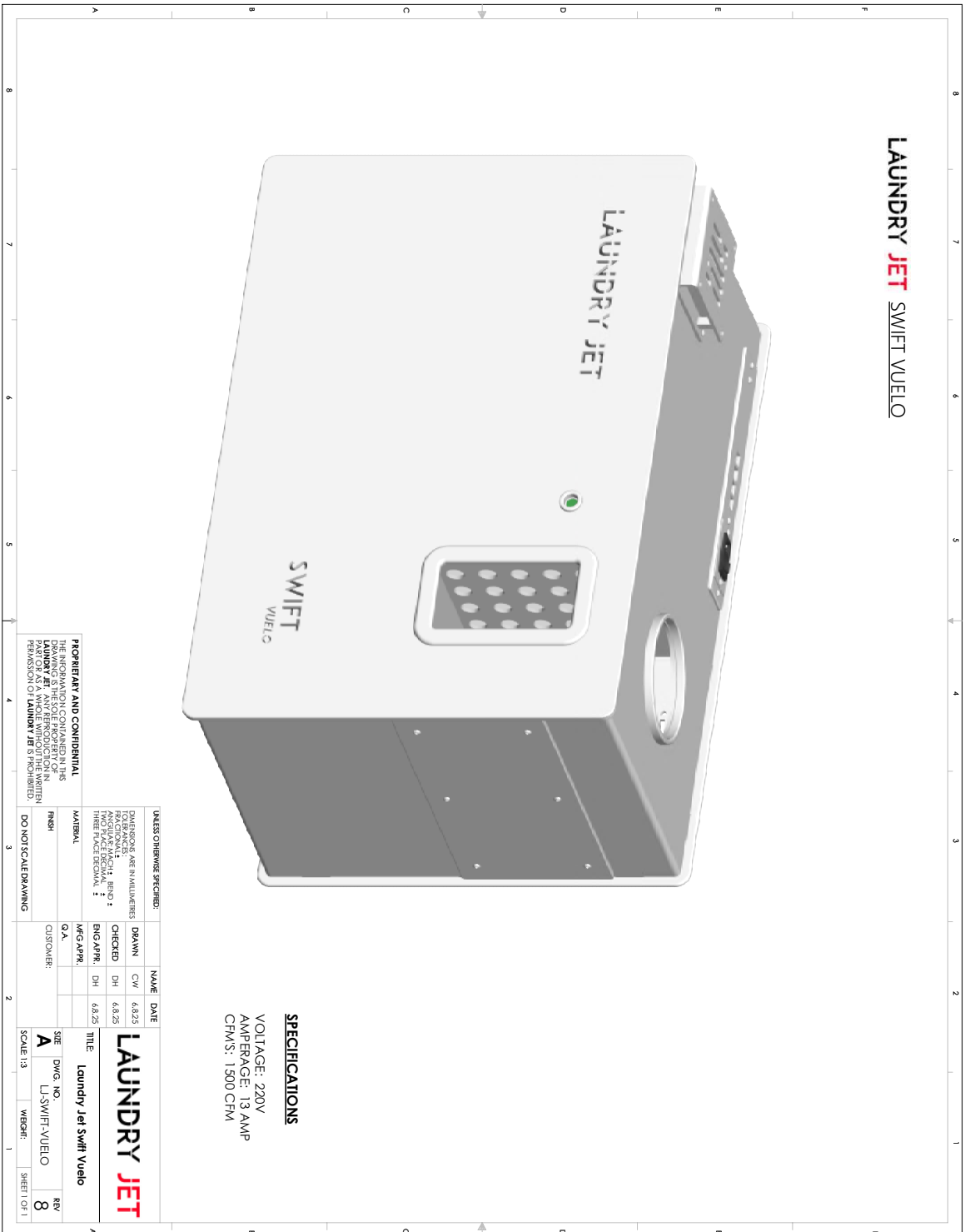
This warranty gives you specific legal rights, and you may have additional rights which vary by state or province.

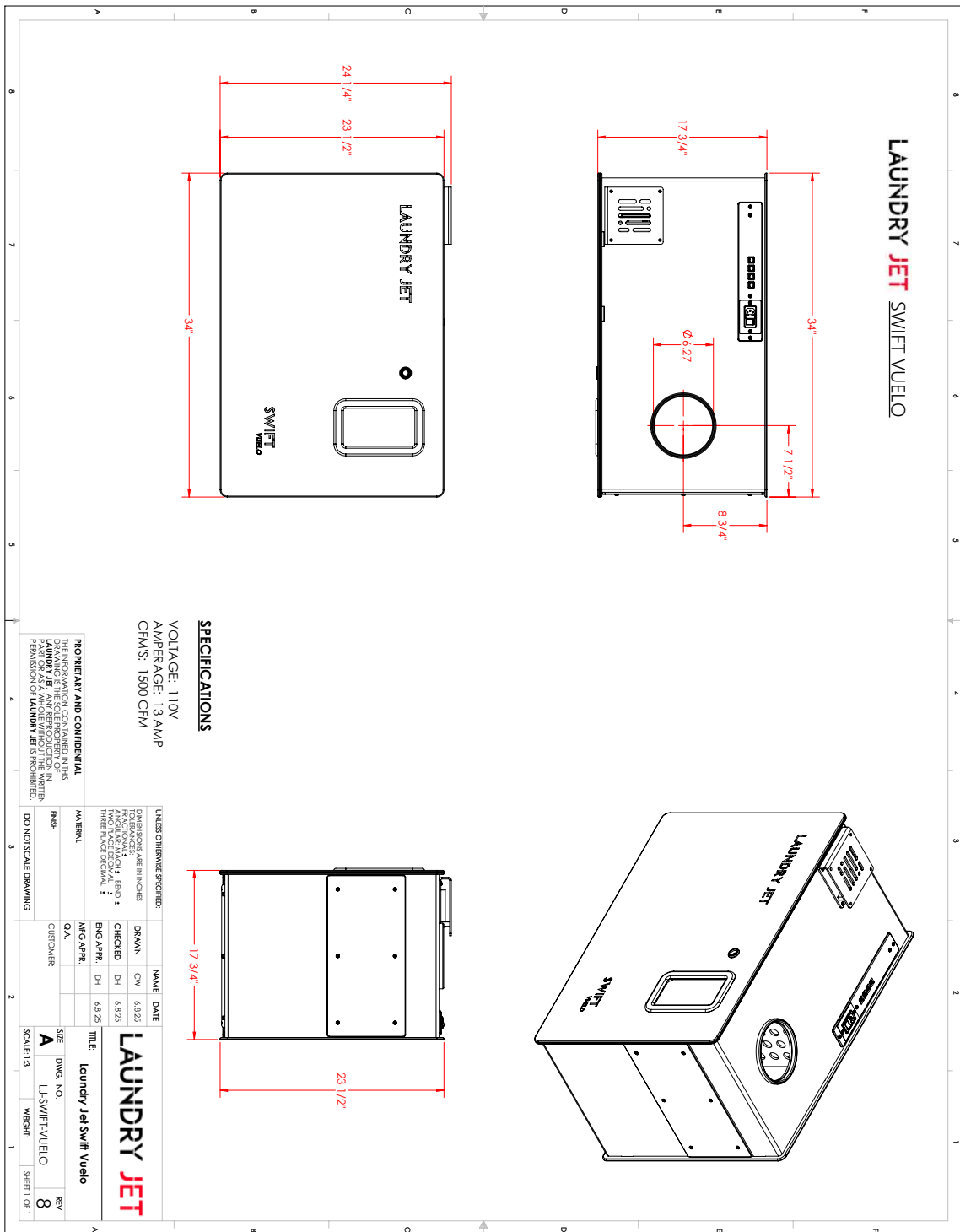
This Limited Warranty applies to installations in the United States and Canada only. For coverage outside these regions, consult your authorized Laundry Jet Dealer.

Other Components

Other components and optional accessories may be covered by separate warranties. Refer to the documentation supplied with those items.







LAUNDRY JET – TOP INSTALLATION TIPS

For a Trouble-Free System & Optimal Performance. **CORE**
INSTALLATION PRINCIPLES

1.1 1. Correct Cable Installation (Cat5 / Cat6 Systems – Swift & Plus)

- Use Cat5e or Cat6 solid core cable only (no stranded patch cables for in-wall runs)
- Terminate with RJ45 connectors
- Maintain minimum 12” separation from high-voltage cables
- Avoid sharp bends (respect minimum bend radius)
- Test every cable before closing walls

Key Tip: Poor terminations are the #1 cause of intermittent port issues.

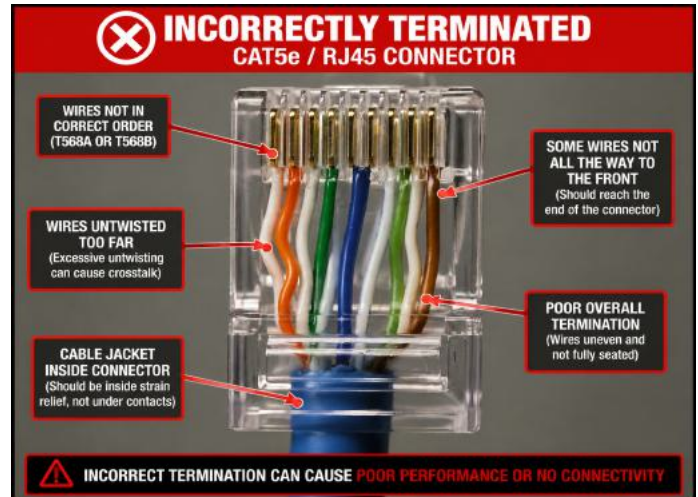
1.2 2. Plan the System Layout Before Installation

- Keep pipe runs short and direct
- Minimize bends
- Recommended port height: ~48” above floor

1.3 3. Proper Pipe Routing & Connections

- Use long sweep bends instead of tight 90° elbows
- Prefer Y-junctions and 45° connections
- No “T” fittings
- Install clean-outs every 20–30 ft
- Use 6” SDR 35 pipe

Key Tip: Smooth airflow reduces blockages.



1.4 4. Cabinet Installations (Remote Eco Systems)

- Cabinet must be fully airtight
- Use ¼" thick sealing tape
- Ensure tight door closure
- Add central batten for double doors
- Adjust hinges if needed

Key Tip: Air leaks reduce suction significantly.



1.5 5. Ensure Adequate Ventilation & Airflow

- Avoid sealed rooms smaller than 8' x 8' without ventilation
- Use louvered doors, wall or ceiling vents if more ventilation needed
- Ensure clear exhaust path

Key Tip: Restricted airflow reduces suction and increases noise.

1.6 6. Allow Proper Clearance Around the Unit

- Maintain minimum 16" (406mm) clearance above top (or side) exhaust diffusers
- Maintain minimum 20" (508) mm clearance below all units
- Avoid tight enclosures without airflow

Key Tip: The unit needs to breathe.

1.7 7. Intake & Suction Optimization

- Ensure airtight pipe connections
- Ensure port is mounted with free space and ventilation around it
- Test suction (target ~35–50 mph)

1.8 8. System Testing Before Handover

- Test each port
- Run multiple load types
- Confirm smooth transport and operation



1.9 9. Common Installation Mistakes to Avoid

- Poor cable termination
- Insufficient ventilation
- Unsealed cabinets (Remote Eco)

Installing in a custom cabinet without allowing free exhaust escape or enough space or ventilation below the units catch door.

- Tight pipe bends
- No clean-outs



1.10 10. Final Thought

90% of performance issues are installation-related

Take the Online Installation Course [Click Here https://bit.ly/ljinstallexam](https://bit.ly/ljinstallexam)
For Support [Click here https://bit.ly/ljsupportrequest](https://bit.ly/ljsupportrequest)

