

LAUNDRY JET

LJ EXPRESS VUELO INSTALLATION GUIDE



*Laundry Jet
2001 Challenger Avenue
Oroville, CA, 95965, USA*

June 2026

Version 2.0

Rev 2.0

Document Revisions

| Date | Version Number | Document Changes |
|-----------|----------------|------------------|
| 1/15/2026 | 1.0 Rev | Express Vuelo |
| 6/8/2026 | 2.0 | Express Vuelo |
| | | |
| | | |
| | | |
| | | |
| | | |
| | | |



FOR ADDITIONAL HELP INCLUDING INSTRUCTIONAL VIDEOS USE THE QR CODE ABOVE

Table of Contents

- 1 Introduction 4
- 2 Products 5
- 3 Pipe Installation Overview 6-9
 - 3 - Components & Tools 6
 - 3.1 - Pipe Installation Standards 7
 - 3.2 - Port Drop Installation 8
 - 3.3 - Port 90 Installation 9
- 4 Express Vuelo Installation 10-20
 - 4.1 - Pipe Drop Install Components & Tools .. 10
 - 4.2 - Express Vuelo Pipe drop installation 11
 - 4.3 - Installation Components and Tools12
 - 4.4 - Express Vuelo Jet Pack Installation 13
 - 4.5 - Blower Pod Installation and Use Notes.. 14
 - 4.6 - Initial connection, test and setup.....15
- 7 Warranty 16
- 8 Engineering Prints 17-19
- 9 Top Installation Tips.....20-22

1. Introduction

A Laundry Jet system is installed in three or four main steps, typically in this order:

1. Install the PVC pipe and fittings connecting the ports to the laundry room (via attic or crawl space)
2. Install the Laundry Jet unit (laundry room wall, cabinet, or remote location such as an attic or crawl space)
3. Install the Laundry Jet ports in bedrooms, bathrooms, or dressing rooms
4. (Optional) Install the Laundry Jet Return Unit for clean-laundry delivery

Vacuum Laundry Pipe

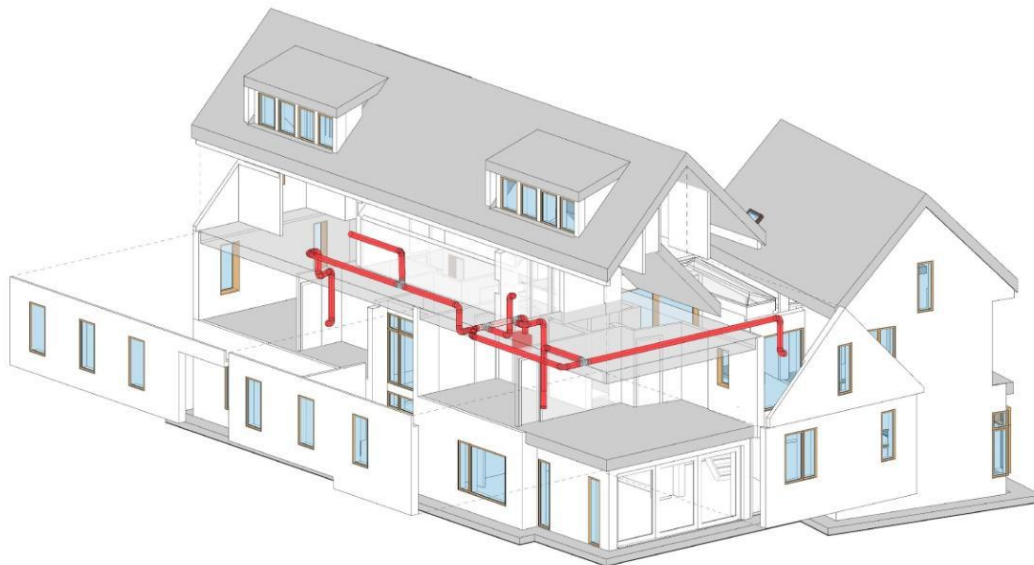
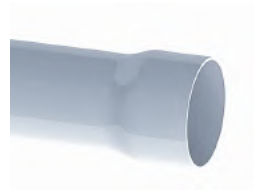
Laundry Jet specifies 6" SDR Schedule 35 White Solvent Weld PVC pipe and fittings. This piping is light weight to make install quick and easy. (US Pipe supplier link <https://bit.ly/10ftx6inch-pipe>)

PVC piping is designed to have a smooth transition in between fittings and connections which ensures that clothing, bedding and towels will travel smoothly to the laundry room.

Pipe & Fittings

6" SDR35 White Solvent Weld PVC pipe 10' x 6"

All Fittings are 6" SDR35 White Solvent Weld NO GASKETS



2. Product - Express Vuelo

The Laundry Jet Express Vuelo is our lowest cost entry level wall or cabinet mounted model with up to 2 available ports and has many upgrades from its predecessor including power, speed, accessibility, capacity, internal cabling, vent position and using low voltage cable instead of Cat5/6.

The Express Vuelo can only be used with the manual Lift Port LV (low voltage) or manual open Slide Port LV and has an automated cycle which allows the user to insert clothes, towels, or bedding leaving the unit to transport and then auto empty in the laundry room, which allows the system to be immediately used again.



The Express Vuelo handles up to 2 different port locations, one of which can be piped to a Return Unit option allowing the user to send clean and dried clothing back to a chosen bedroom or location in the home.

The Express Vuelo has a polished and reflective white gloss lux finish and is a high-end ergonomic appliance which adds technology, automation, and value to any home.



3. Pipe Installation - Components and Tools

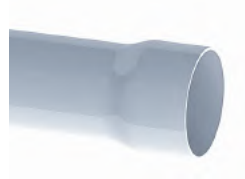
Components



Assembly



6-inch Wye



6"x10 ft SDR schd 35 Pipe



Pipe 6-inch Cleanout & Adapter

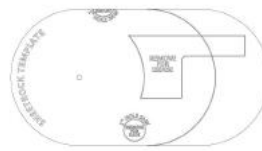
Port 90°



6 Inch 45 Degree Elbow



Swept Long 90



Sheetrock Template

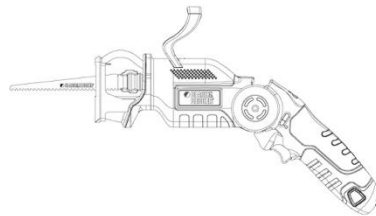


Cable Bundle

Tools



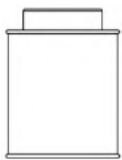
Cordless Drill



Sawzall



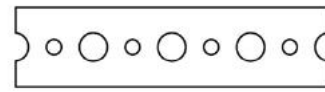
Tape Measure



PVC Glue

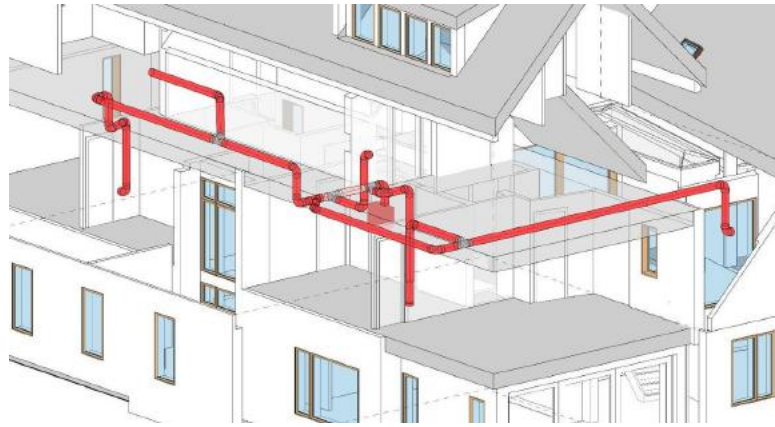


1" Wood Screw



Plumber's Metal Strapping Tape

3.1 Pipe Installation Standards



- All joints ideally should use a minimum entry angle of 45 degrees (space permitting with a break distance of 18 Inches (460 MM)). See Figure 1.
- Swept 90-degree turns are also allowed. See figure 2
- Pipe cuts must be straight and de burred before seating.
- Pipe must be completely seated in fitting connections.
- Seal all joints using standard PVC glue. Connections must be glued around 360 degrees to ensure maximum system performance.
- System must be strapped with “plumbers’ tape” or strapped every 6 feet. Port 90 must be strapped and secured prior to Port installation.
- Install Cleanout ports every 50 feet on angled runs. Straight trunk lines can run up to 100 feet with cleanouts at either end.
- Wye fittings are installed with airflow moving in a single direction toward the location of the Jet Pack unit. See figure 3. Never use “T” fittings

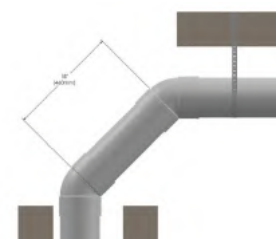


Figure 1



Figure 2

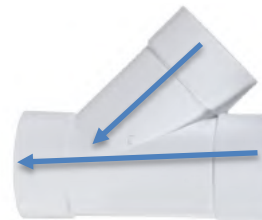
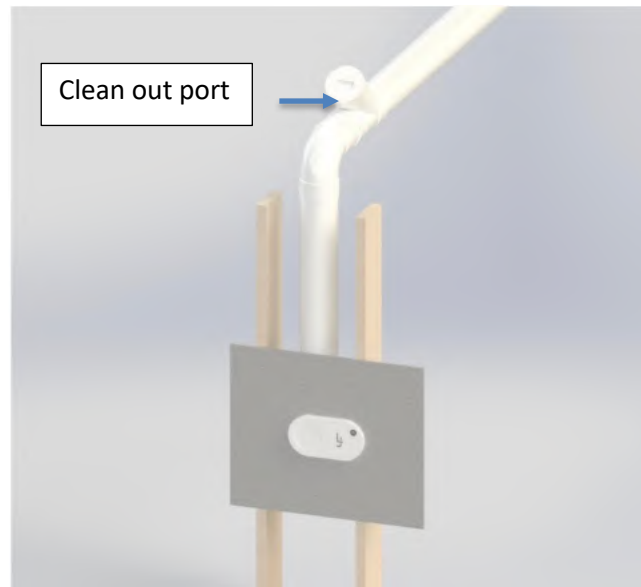


Figure 3

3.2 Port Drop installation



Port Drop Installation

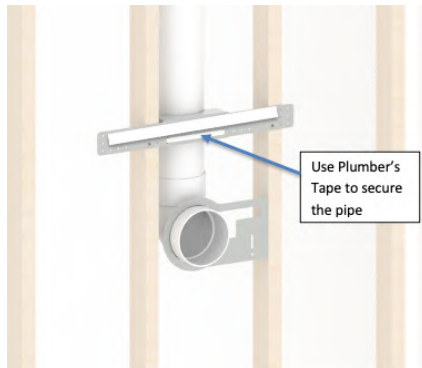
Mount the **Port 90** using the **Port Bracket**. Refer to **Page 9** for detailed Port 90 installation instructions.

For the port drop, use a **standard 6" SDR swept 90** fitting. Ensure the drop line is **blocked and securely strapped at the midpoint** for proper support.

Install **clean-out ports every 20–30 feet**, positioning them at **accessible locations** along the pipe run to allow for future maintenance.



3.3 Connecting the Port 90 to the Pipe



Port 90 installation New Construction

- Port 90 must be installed with front face of Port 90 flush with the finished face of interior wall.
- Port 90 must be installed on a plum horizontal port drop line.
- Use the Port 90 Mount Bracket and Plumbers Tape to align and secure the Port 90 to the frame (unless a remodel)

Port 90 installation in Existing Homes and Remodels

Installing a Laundry Jet in an existing home is surprisingly straightforward, even with finished walls. Since the system uses 6.25" (159 mm) piping, we utilize smart routing to maintain your home's aesthetic:

- **Closet Integration:** The most common method is placing the Port on a wall shared with a closet. This allows the pipe to run vertically through the closet interior and directly into the attic or crawl space.
- **Custom Chases:** In rooms without closets or across multiple floors, the pipe is neatly enclosed in a small, matching drywall "chase" (a slim decorative column) to keep it completely hidden.
- **Accessible Routing:** Main pipe runs are tucked away in attics or crawl spaces, ensuring the system remains discreet and easy to service without opening up your main living areas.

Quick Comparison Table

| Installation Type | How We Handle the 6.25" Pipe |
|----------------------------|---|
| Closet-Backed Walls | Pipe runs vertically through the closet to the attic/crawl space. |
| Open Living Areas | Pipe is concealed in a neat, paint-matched drywall chase. |
| Multi-Story Homes | Vertical runs are boxed in; horizontal runs stay in the attic/basement. |
| New Construction | Routes are integrated directly into the architectural blueprints. |

4.1 Components and Tools

Components

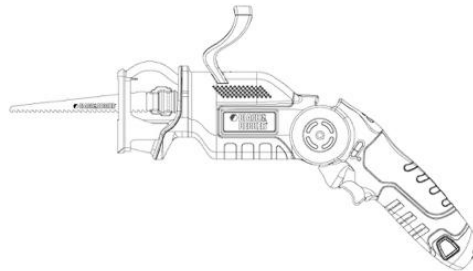


Metal Plumbers Tape

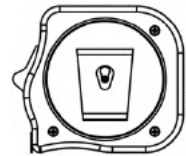
Tools



Cordless Drill



Sawzall



Tape Measure

4.2 Express Vuelo Jet Pack - Pipe Drop Installation

- Install a standard 45 or swept 90 drop in the attic above from a Y connector on the main trunkline to create a vertical drop to the Express Vuelo Unit
- Strap pipe securely at the attic to ceiling transition.
- Connect the down pipe to the collar on the top right of the Express Vuelo
- Adjust pipe, (box it in or use clear pipe for aesthetics) and secure it for a true plumblines drop into the Jet Pack collar

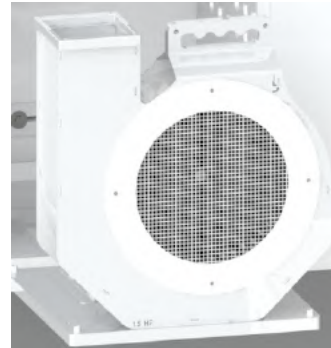


4.3 Express Vuelo Installation **Components and Tools**

Components



Express Vuelo Jet Pack

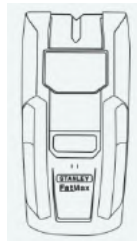
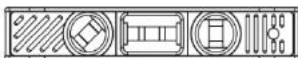


Express Vuelo Jet Pack Blower Pod



2 port top Low Voltage Pinch AV cable connectors + power

Tools



Cordless Drill

Stud Finder

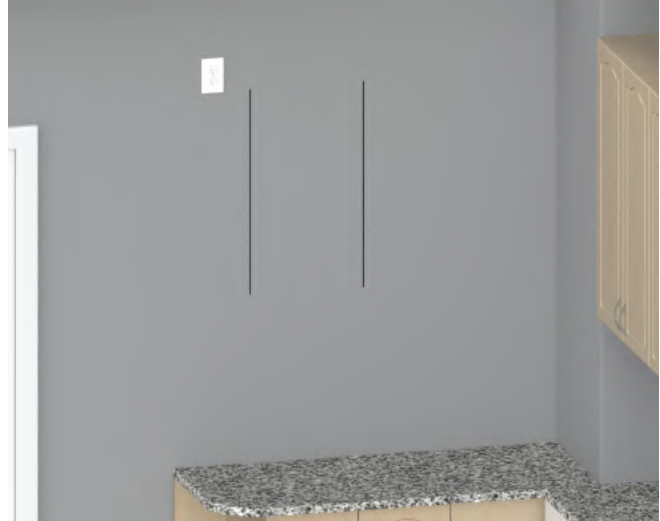
Level

4.4 Express Body Installation

Jet Pack Installation

Step 1

- Using a stud finder, locate mounting Stud positions on the wall. Mark the Jet Pack installation position on the intended mount wall.
- Draw a vertical line down the center of your mount stud at the elevation of your desired position of the Express Vuelo. Note it must be mounted at least 12 inches below the ceiling to allow enough venting space and avoid back pressure.

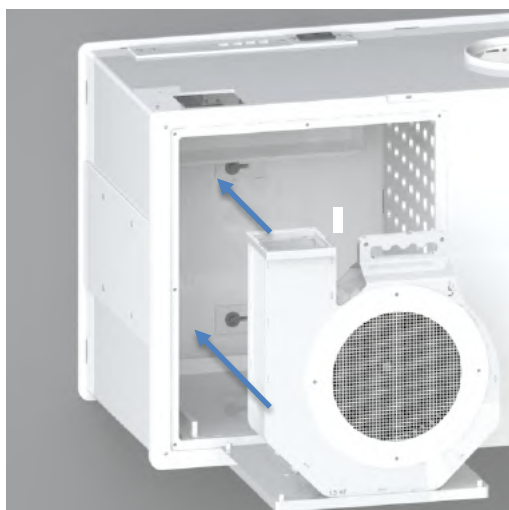


Step 2

- Move the unit into position until you can see your mount line in the mount slots.
- Mark your mount hole position for predrill at 0.25" (6.5mm) Predrill your mount holes to 3" (76mm)
- Using a socket drive on your drill, set the jet pack into position and install the 4 provided 1/4"x 3" Lag screws.
- Check that the screws are tight but not over tightened to avoid damaging the back plate



4.5 Blower Pod Installation



Blower Pod Installation

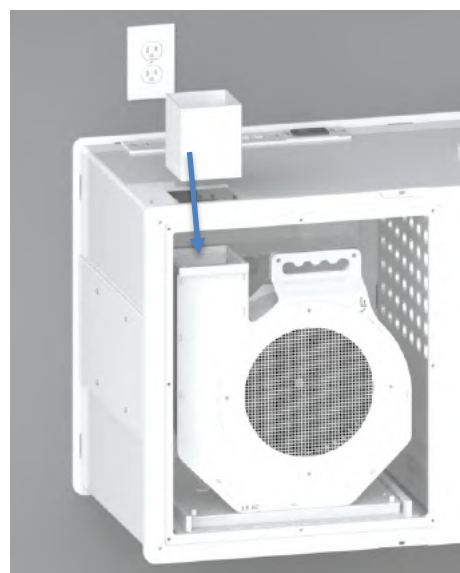
The Blower Pod must be installed after installation of the Express Vuelo unit.

Blower Pod Installation

- Remove the screws and the front panel of the Express Unit.
- Align and position the blower pod between guide rails and slide into the unit until fully seated. Attach the cable at the top inside of the Laundry Jet Express to the Pod connector to provide power.

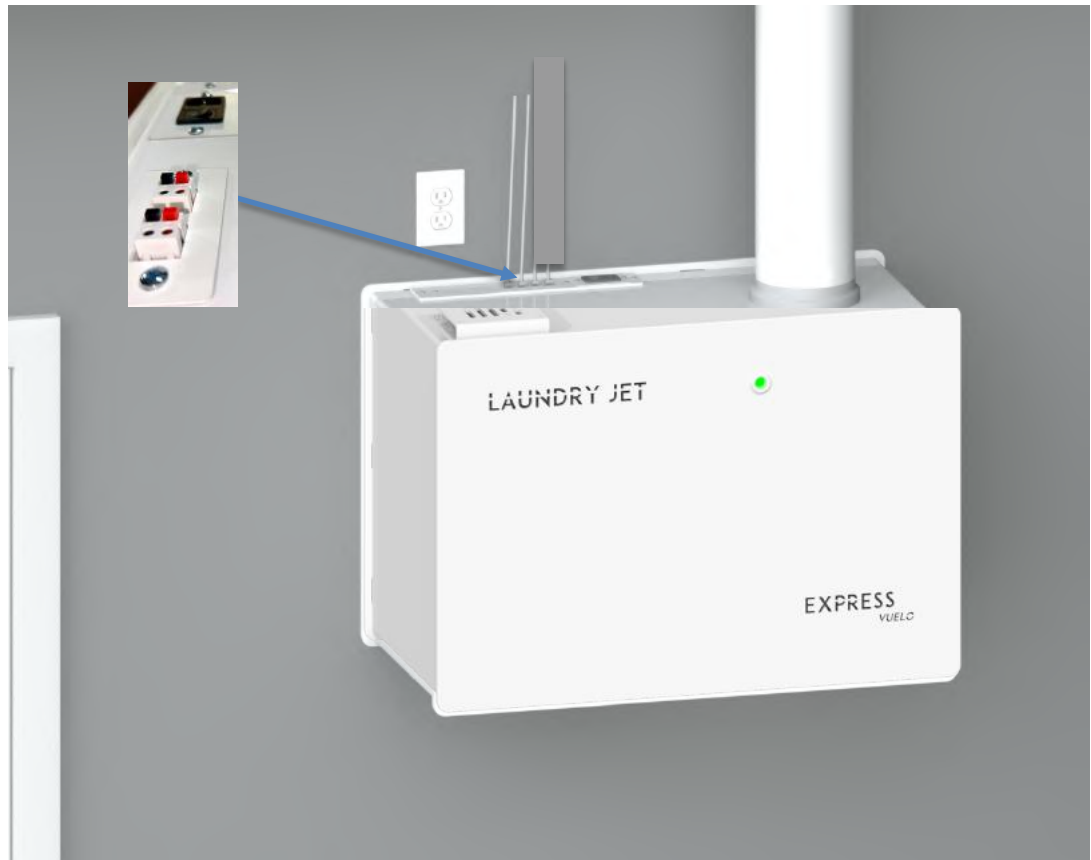
4" Square Connector Installation

- Install the 4" Square Connector thru the square cutout in the unit, and into the square flange of the Blower Pod. Ensure that the connector is fully seated and flush with the top face of the blower pod to let the air escape out the top and not into the machine.
- Screw the bottom plate of the Blower Pod to the Express base
- Screw the Diffuser exhaust vent to the top of the exhaust cut out
- Re attach the Express Front panel with the screws



4.6 Initial connection, Test and Setup

Test the lower discharge door. Make sure that the door moves freely without drag as it cycles open and close.



- Test all AV connections prior to the next step
- Ensure that the Jet Pack is not plugged in
- Connect all the cables as shown above to the top of the Express Unit
- Make sure all ports are fitted and properly connected to the other end of the cables and ready to run
- Plug in your Jet Pack unit to the appropriate power supply. **The unit will perform a search set up sequence to find all ports that are connected so they must all be connected before powering on the Unit**
- Proceed to test that each port can activate the system. Wait until the system turns off after testing each port before testing the next on

WARRANTY

Lifetime Limited Warranty

Laundry Jet® is protected by a Limited Lifetime Warranty for the original purchaser, valid from the date of purchase, provided the system remains at its original installation location and the warranty registration form is completed at: <https://www.laundryjet.com/warranty>

Warranty Coverage

- Limited Lifetime Warranty on the metal body
- Three (3) Year Limited Warranty on the Jet Pack PosiFlow™ motor
- Three (3) Year Limited Warranty on Laundry Jet ports

This warranty covers defects in materials and workmanship under normal residential use, when installed and operated in accordance with Laundry Jet installation and operating instructions.

Exclusive Warranty

THIS WARRANTY IS THE SOLE AND EXCLUSIVE WARRANTY OF LIFEFLOW, LLC – LAUNDRY JET. ALL IMPLIED WARRANTIES, INCLUDING MERCHANTABILITY OR FITNESS FOR A PARTICULAR PURPOSE, ARE LIMITED IN DURATION TO THE APPLICABLE WARRANTY PERIOD STATED ABOVE.

Warranty Claims & Service

1. In the event of a suspected defect:
2. Contact the selling authorized Laundry Jet Dealer or Laundry Jet Technical Support.
3. The customer may be required to return the allegedly defective component to Laundry Jet or an authorized service facility for inspection.
4. Customer is responsible for shipping the product to Laundry Jet for evaluation.
5. If the product is confirmed defective, Laundry Jet will, at its sole option, repair, replace, or credit the defective part and cover the cost of return shipping.
6. If no defect is found, inspection, handling, and return shipping costs may apply.
7. Warranty service must be performed by an authorized Laundry Jet Dealer using genuine Laundry Jet replacement parts.

Parts-Only Coverage

This warranty covers parts only. Labor, removal, reinstallation, cabinetry, drywall, electrical work, and any associated service or repair costs are not covered.

Exclusions

This warranty does not cover pipe or fittings, normal wear and tear, commercial or institutional use, drywall dust, misuse, abuse, neglect, accidents, acts of God, improper installation, modification, alteration, improper operation, or failure to maintain the system.

Limitation of Liability

LIFEFLOW, LLC – LAUNDRY JET SHALL NOT BE LIABLE FOR ANY INCIDENTAL, CONSEQUENTIAL, OR SPECIAL DAMAGES ARISING FROM THE USE OR INABILITY TO USE THIS SYSTEM, EXCEPT WHERE PROHIBITED BY LAW.

Some states or provinces do not allow limitations on implied warranties or damages; therefore, these limitations may not apply to you.

Legal Rights & Geographic Scope

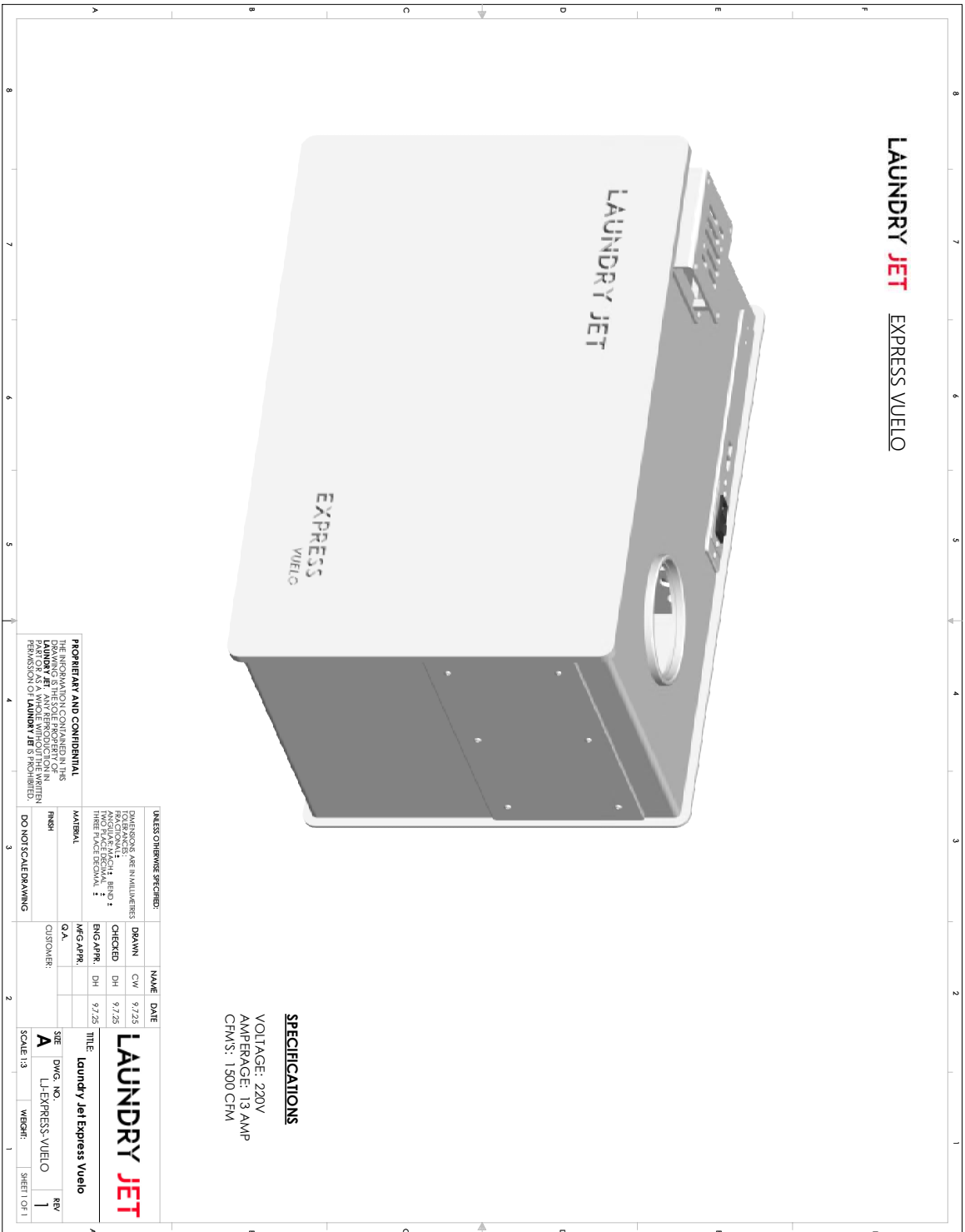
This warranty gives you specific legal rights, and you may have additional rights which vary by state or province.

This Limited Warranty applies to installations in the United States and Canada only. For coverage outside these regions, consult your authorized Laundry Jet Dealer.

Other Components

Other components and optional accessories may be covered by separate warranties. Refer to the documentation supplied with those items.





LAUNDRY JET EXPRESS VUELO

SPECIFICATIONS
 VOLTAGE: 220V
 AMPERAGE: 13 AMP
 CFMS: 1500 CFM

UNLESS OTHERWISE SPECIFIED:
 DIMENSIONS ARE IN MILLIMETERS
 DECIMALS ARE IN INCHES
 FRACTIONS ARE IN INCHES
 TWO PLACE DECIMALS
 THREE PLACE DECIMALS

| NAME | DATE |
|-----------|-----------|
| DRAWN | CW 9/7/25 |
| CHECKED | DH 9/7/25 |
| ENG APPR. | DH 9/7/25 |
| MFG APPR. | |
| Q.A. | |
| CUSTOMER: | |

DO NOT SCALE DRAWING

THE INFORMATION CONTAINED IN THIS DRAWING IS THE PROPERTY OF LAUNDRY JET. IT IS TO BE USED FOR THE MANUFACTURE OF LAUNDRY JET EXPRESS VUELO. NO PART OR AS A WHOLE WITHOUT THE WRITTEN PERMISSION OF LAUNDRY JET IS FURNISHED.

PROPRIETARY AND CONFIDENTIAL

PROPERTY OF LAUNDRY JET

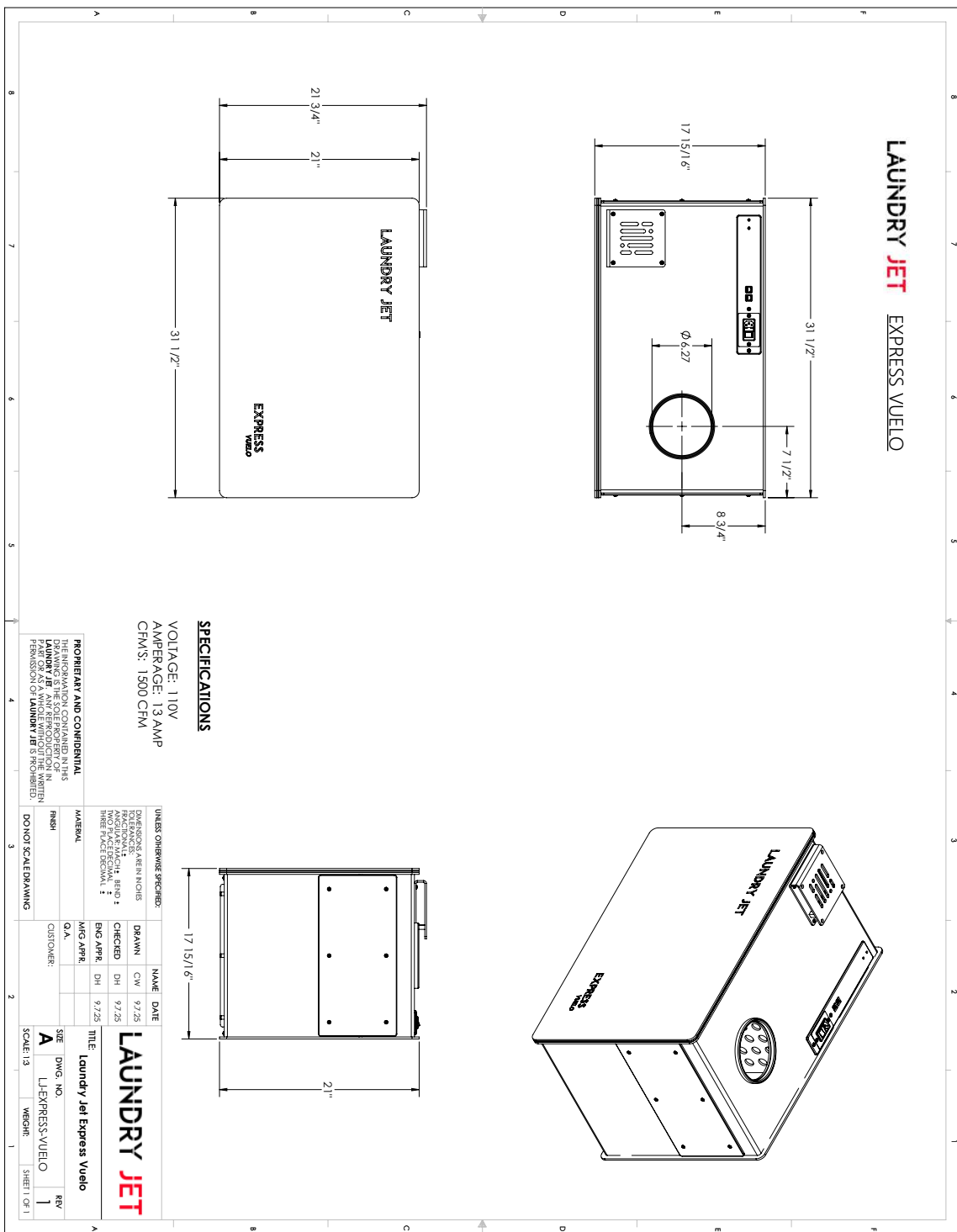
LAUNDRY JET

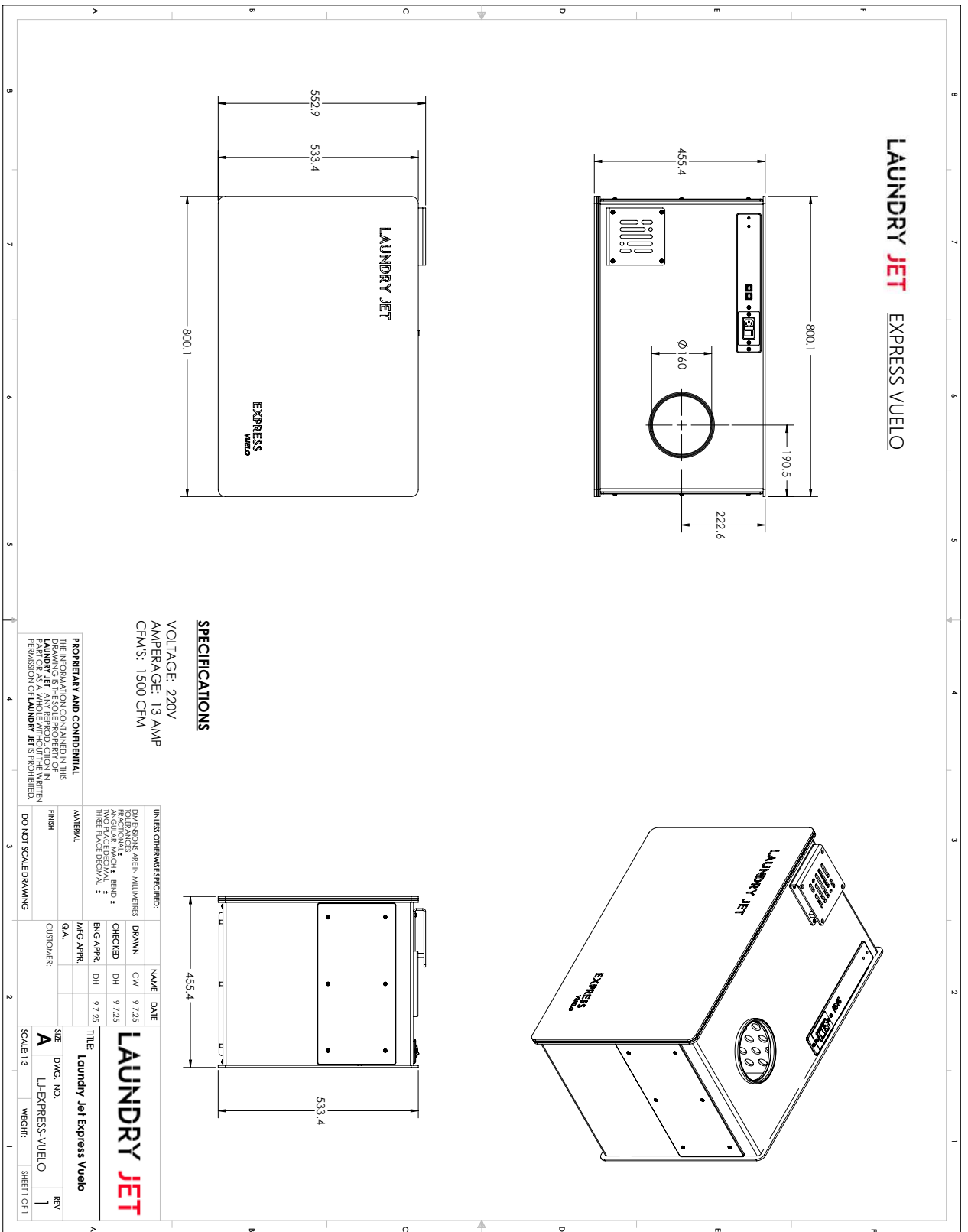
TITLE: Laundry Jet Express Vuelo

SHEET 1 OF 1

SCALE: 1:3

WROTE: REV 1



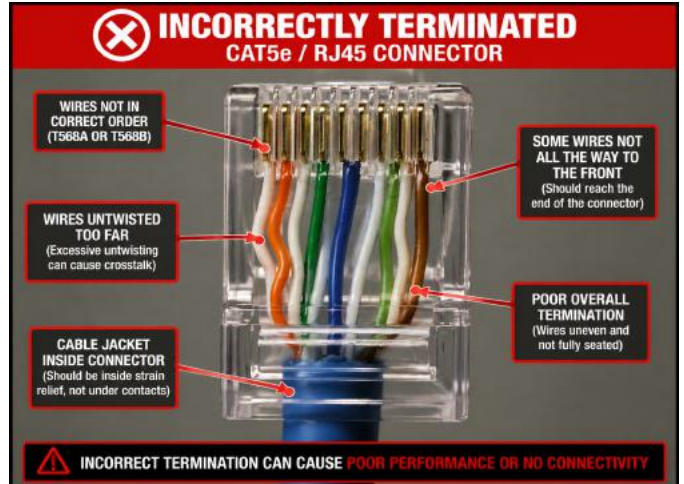


LAUNDRY JET – TOP INSTALLATION TIPS

For a Trouble-Free System & Optimal Performance. CORE INSTALLATION PRINCIPLES

1.1 1. Correct Cable Installation (Cat5 / Cat6 Systems – Swift & Express)

- Use Cat5e or Cat6 solid core cable only (no stranded patch cables for in-wall runs)
- Terminate with RJ45 connectors
- Maintain minimum 12” separation from high-voltage cables
- Avoid sharp bends (respect minimum bend radius)
- Test every cable before closing walls



Key Tip: Poor terminations are the #1 cause of intermittent port issues.

1.2 2. Plan the System Layout Before Installation

- Keep pipe runs short and direct
- Minimize bends
- Recommended port height: ~48” above floor

1.3 3. Proper Pipe Routing & Connections

- Use long sweep bends instead of tight 90° elbows
- Prefer Y-junctions and 45° connections
- No “T” fittings
- Install clean-outs every 20–30 ft
- Use 6” SDR 35 pipe



Key Tip: Smooth airflow reduces blockages.



1.4 4. Cabinet Installations (Remote Eco Systems)

- Cabinet must be fully airtight
- Use ¼" thick sealing tape
- Ensure tight door closure
- Add central batten for double doors
- Adjust hinges if needed

Key Tip: Air leaks reduce suction significantly.



1.5 5. Ensure Adequate Ventilation & Airflow

- Avoid sealed rooms smaller than 8' x 8' without ventilation
- Use louvered doors, wall or ceiling vents if more ventilation needed
- Ensure clear exhaust path

Key Tip: Restricted airflow reduces suction and increases noise.

1.6 6. Allow Proper Clearance Around the Unit

- Maintain minimum 16" (406mm) clearance above top (or side) exhaust diffusers
- Maintain minimum 20" (508) mm clearance below all units
- Avoid tight enclosures without airflow

Key Tip: The unit needs to breathe.

1.7 7. Intake & Suction Optimization

- Ensure airtight pipe connections
- Ensure port is mounted with free space and ventilation around it
- Test suction (target ~35–50 mph)

1.8 8. System Testing Before Handover

- Test each port
- Run multiple load types
- Confirm smooth transport and operation



1.9 9. Common Installation Mistakes to Avoid

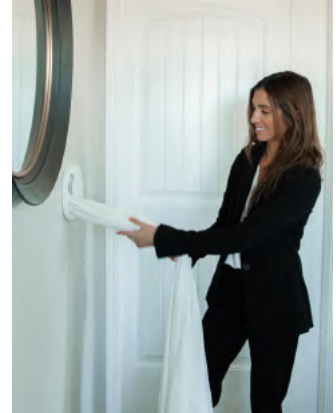
- Poor cable termination
- Insufficient ventilation
- Unsealed cabinets (Remote Eco)

Installing in a custom cabinet without allowing free exhaust escape or enough space or ventilation below the units catch door.

- Tight pipe bends
- No clean-outs

1.10 10. Final Thought

90% of performance issues are installation-related



Take the Online Installation Course [Click Here https://bit.ly/ljinstallexam](https://bit.ly/ljinstallexam)
For Support [Click here https://bit.ly/ljsupportrequest](https://bit.ly/ljsupportrequest)

