

# LAUNDRY JET

## THE AIR POWERED LAUNDRY CHUTE



### Contact:

+ 1.800.867.4580

info@laundryjet.com

### Website :

[www.laundryjet.com](http://www.laundryjet.com)

### Address :

2001 Challenger Avenue

Suite A

Oroville, CA 95965, USA

# Welcome To LAUNDRY JET

Air-Powered Laundry Transport Systems



THE WHOLE HOUSE VACUUM  
LAUNDRY TRANSPORT SYSTEM

# Table Of CONTENTS

## Benefits of Airpower Transport

01

- Reliable automated systems
- Transport laundry from any room on any floor
- A great way to encourage children of all ages to help do laundry
- Perfect solution for physically impaired or elderly persons
- Suitable for a wide variety of items
- Ideal for both existing and new construction homes
- Time saving convenience
- Reduced clutter and flexible accessibility
- Value add
- Hygiene
- It never gets full and you can return clean clothes to a chosen room
- Regular plug and it won't take your watch, wallet, keys or kids toys

## The System's Basic Components

02

- Jet Pack Units
- Return Units
- Wall Ports

## Installation of Laundry Jet Systems

03

- Engineering team support
- 3D design and rendering
- Training and support

## How to Start Your Project

04

- Get a quote

## Reliable automated systems

Cosmetic wall ports that complement the look and feel of your home. Automatic sensors shut off the system after clothing arrives and auto empties, ready for the next load.



## Transport laundry from any room on any floor

Say goodbye to the hassle of carrying heavy, awkward laundry baskets up and down the stairs. Our innovative laundry system automatically empties your laundry upon arrival in the laundry room. It effortlessly moves both dirty and clean laundry between multiple floors, saving you time and energy.



## A great way to encourage children of all ages to help do laundry.

Ports can be placed at any height in areas like bedrooms, bathrooms and closets. Designed to transport laundry only as cellphones, keys and toys are too dense to move easily through the system.



# Benefits of Airpower Transport



## Perfect solution for the physically impaired or elderly persons.

Not only does this solution add convenience to your daily routine, but it also enhances safety and independence, especially for the physically impaired or elderly. Embrace a smarter, easier way to manage your laundry and enjoy the freedom of a home where laundry practically does itself!



## Suitable for a wide variety of items

Our robust system effortlessly moves almost all clothing and linens including bedding, sheets, light blankets, large jeans, and even damp towels. Simplify laundry day with a solution strong enough to transport your toughest loads.



## Ideal for both existing and new construction homes

Can be installed in both single and multilevel homes. Laundry Jet systems can be designed for almost any size home from 1 to 20+ bedrooms, bathrooms or closets by adding additional ports or vacuum units.

## Time saving convenience

Dirty laundry can be deposited from any room with a port, eliminating the need to carry laundry baskets around the house. Skip collecting laundry and hauling it downstairs. Just toss it in the wall port and it gets whisked away.

## Reduced clutter and flexible accessibility

No more overflowing laundry baskets in bedrooms and bathrooms. Ports can be installed at different heights to accommodate everyone in the household, including children and those with mobility limitations.

## Value add

Automation and smart home features like Laundry Jet add value to a home when it comes time to sell.



# Benefits of Airpower Transport



## Hygiene

Dirty laundry does not linger in dirty laundry baskets around the home anymore. Dirt, germs and odors on clothing are transported to the laundry room as soon as the item is taken off.



## It never gets full and you can return clean clothes to a chosen room even back upstairs

With the auto unloading function of the Laundry Jet the receiving unit in the laundry room is never full and empties into a basket or cabinetry below whatever your preferences. This means continuous usage from the ports in the house. You can also install a return unit and have clean laundry sent back to a single room of choice for ironing, hanging or folding. This is especially useful to move clean laundry from lower floors to upper bedrooms.



## Regular plug and it won't take your watch wallet or kids toys

Laundry jet uses standard home power (110V) or 220 (International) plug avoiding the need for additional power or cabling. Due to a tight turn just after the narrower than pipe port opening, the Laundry Jet will only take light, high volume items like clothing, bedsheets towels and linens.

# The System's Basic Components

## Jet Pack Units

EXPRESS

VUELO

### EXPRESS VUELO 110V ( Replaces Express )

Power. Precision. Performance.

Redesigned, easy access, compact and affordable.

The new Express Vuelo will replace its predecessor in a larger but still compact, US-upgrade over the previous LJ Express model.

Designed for small to mid-sized homes, this next-gen air-powered laundry transport system offers increased capacity and enhanced features, all while maintaining smooth operation and unmatched efficiency in a compact wall mounted design.

The Express Vuelo handles up to 2 different port locations, one of which can be piped to a Return Unit option allowing the user to send clean and dried clothing back to a chosen bedroom or location in the home. The Express has a polished and reflective white gloss lux finish.

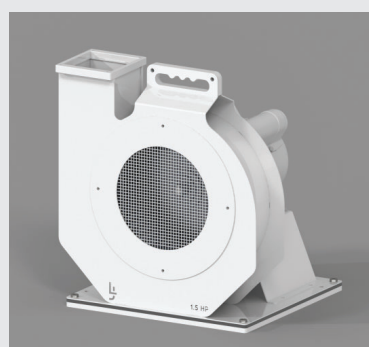
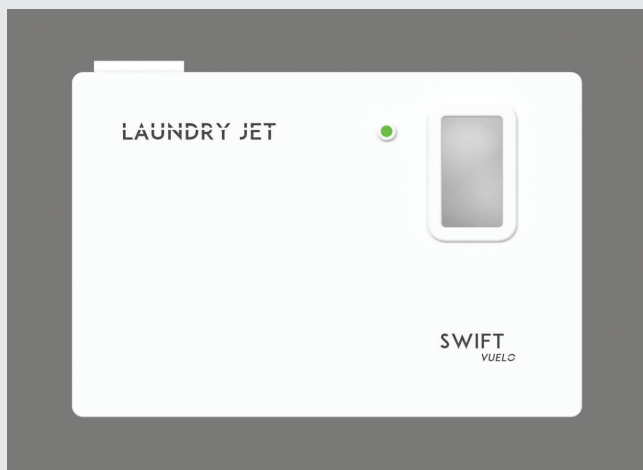
### FEATURES

- Ideal for up to 2 ports, Slide or lift
- New US-made motor, 110V
- Engineered for compact modern residential use
- New 15% increase in laundry catch chamber capacity
- New removable front panel access for easy loading or removing and maintenance of the Power Unit.
- New topside PCB Board and Vent position
- New LED "system on" indicator
- Max distance from furthest port 200ft (60m)
- New low voltage "Signal only" daisy chain-able cable-connections.



# The System's Basic Components

## Jet Pack Units



### SWIFT VUELO 110V ( Replaces Swift )

Smarter. Faster. Built for the Future

The new Swift Vuelo replaces the Swift and delivers 50% more power than its predecessor with a 1.5 HP punch in a US-powered upgrade over the previous Swift model. Designed for mid-to-larger homes who do not need to enclose the unit in a cabinet, this next-gen air-powered laundry transport system offers easier internal access, 25% increased catch chamber capacity and enhanced airflow performance, all while maintaining smooth operation and the unmatched efficiency of Laundry Jet's unique air powered laundry transport systems.

The Swift Vuelo handles up to 4 different port locations and can be installed with a Return Unit option which enables the user to send cleaned and dried clothing back to a chosen bedroom or location in the home. The Swift has a polished and reflective gloss finish.

### FEATURES

- New 50% more powerful, US-made 110V motor
- New Increased airflow capacity
- Ideal for up to 4 ports and wall mounted – “no cabinet”
- Engineered for modern residential use in mid to large homes
- New 25% increase in laundry catch chamber capacity
- New removable front panel access for easy loading or removing and maintenance of the Power Unit– i.e. no side Pod.
- New topside Board and Vent position
- New LED “system on” indicator
- New low voltage “Signal only” daisy chain-able cable-connections.

## The System's Basic Components

### Jet Pack Units

#### PLUS VUELO 110V ( Replaces LJ Plus )

High-Performance Flow in a Sleek New Package.

The new Plus Vuelo harnesses 50% more airflow than its predecessor, The Plus, with the ability to deliver faster laundry transfers and 25% higher capacity handling for the largest homes or those that prefer an “in Cabinet” finish. With upgraded US-built internals, this model is perfect for families who expect seamless performance every day with a discreet in-cabinet design.

The Plus Vuelo can utilize both styles of Laundry Jet Ports (manual or Automatic) and has an automated cycle which allows the user to insert the clothes, towels, or bedding and walk away leaving it immediately ready to be used again. The Laundry Jet Plus is the highest capacity model and handles up to 8 different locations and can be installed with a Return Unit Option which enables the user to send cleaned and dried clothing back to a chosen bedroom or location in the home.

#### FEATURES

- New 50% more powerful, US-made 110v motor
- New 25% increase in laundry catch chamber capacity
- New topside PCB Board with simple access
- Perfect for fast-paced households or larger homes
- Designed to mount inside a cabinet
- Designed for up to 8 ports
- New Front panel access for easy loading of power Unit and maintenance – no side Pod.
- New LED “system on” indicator



# The System's Basic Components

## Return Units



### RETURN UNIT

All systems are compatible with the Return Unit. The Return Unit can be installed in a bedroom, closet, or other room where the user desires clean laundry to be returned to. After the laundry is cleaned, open the port in the laundry room, feed clean laundry into the open port, and clean laundry will be transported to the Return Unit.

The clean laundry is transported through a separate pipe than the one used to bring the dirty laundry to the laundry room, this helps keep clean laundry clean. The Return Unit is a great feature to add to any home to create a closed circuit laundry system for transporting laundry to and from the laundry room.

### FEATURES

- Wall Mounted Inside your chosen bedroom or ironing location
- Can also be put in a custom cabinet if required
- No power required
- Manual emptying
- Uses 6" pipe (6.25" – 159 mm OD)
- Maximum number of ports 1 ( located in the laundry room)
- Max distance from furthest port 80ft (25m)
- Uses Lift, iSlide and automatic iSense ports (purchased separately)

### RETURN UNIT XP

Same Features as the standard Return Unit with a 1/2 load capacity.

## The System's Basic Components

### Wall Ports

#### iTap PORT

The Laundry Jet iTap Port is our most advanced automatic port design to date, fully compatible with both the Swift Vuelo and Plus Vuelo systems. Its intelligent auto-close feature delivers effortless, button-touch convenience.

With a single press, (double press if upgrading older iSense ports on non-Vuelo systems) the port opens automatically, activates the system, and begins the cycle. After the final item is sent, the user can simply walk away—the iTap Port closes itself at the end of the cycle, leaving it ready for the next use.

Constructed from a sleek, silk-finish white material, the iTap Port blends modern styling with smart automation, making it a standout in the Laundry Jet lineup and our premium, top-of-the-range port solution.

#### FEATURES

- Wall Mounted Inside bedrooms, pantries, closets, or bathrooms.
- Push button to activate cycle
- Auto close
- Uses 6" pipe (6.25" – 159 mm OD) or International 150 mm pipe
- Return Unit compatible
- Air noise approx. 22 Decibels( whisper quiet)



# The System's Basic Components

## Wall Ports



### SLIDE PORT

The Laundry Jet Slide Port is our latest manual port design. It is aimed as a economic port while still retaining the functionality and style of the Laundry Jet brand and matches perfectly with modern design. It provides the simplest, easy to use, manual open functionality. Constructed of durable plastic, the Slide Port is simply mounted by screws, to the wall. It is opened by just sliding the port door open, activating the Laundry Jet system.

It can be installed in 4 different orientations depending on your desired location giving maximum flexibility. For example you can install it to open to the left because of a door jam on the right and vice a versa, including up and down if required for maximum design and installation flexibility. Once opened, the dirty laundry, bed sheets and even damp towels are simply fed into the now open port and drawn away to the laundry room. Once the user has fed the last item and the cycle has finished, they can gently slide the door closed ready for the next use.

### FEATURES

- Wall Mounted Inside bedrooms, pantries, closets, or bathrooms.
- Slide to activate cycle
- Manual close
- Two handed laundry feeding
- Uses 6" pipe (6.25" – 159 mm OD) or optionally International 150 mm pipe
- Return Unit compatible
- Air noise approx. 22 Decibels (whisper quiet)

## The System's Basic Components

### Wall Ports

#### LIFT PORT

The Laundry Jet Lift Port is our entry level manual port design. It is aimed as an extremely economic port while still retaining the functionality and style of the Laundry Jet brand and matches perfectly with modern design. It provides the simplest, easy to use, manual open functionality. Constructed of durable hi gloss lux materials the Lift Port is simply mounted. It is opened by just lifting and holding the port door open and this activates the timed cycle. Once opened, the dirty laundry, bed sheets and even damp towels are simply fed one handed into the port and drawn away to the laundry room. Once the user has fed the last item and the cycle has finished, they can gently lower the door closed ready for the next use.

#### FEATURES

- Manual lift and hold opening
- White plastic high gloss finish
- Smallest port footprint
- Soft close action
- 1 handed laundry feeding
- Auto Timer shut off
- Compatible with the Laundry Jet Return Unit
- Compatible with Express and Swift only
- DIY or Contractor install if certified
- Uses 6" pipe (6.25" – 159 mm OD) or optionally International 150 mm pipe
- Air noise approx. 22 Decibels( whisper quiet)



## DIY

For advanced DIY'ers you can install Laundry Jet yourself . We have a full suite of instructions and a comprehensive online training course ( which must be completed for warranty validity prior to install).

## LOCAL CONTRACTOR

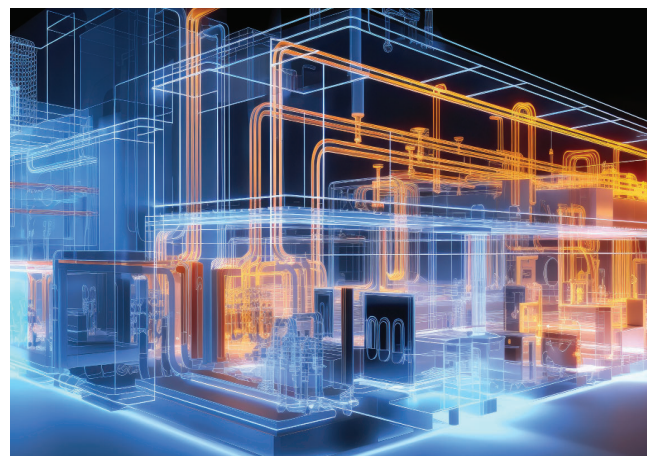
Hire your own local contractor to do the course and install for you. Ask for help from our growing network. We can help find you contractors as our network of trained companies and individuals grows, just email a installer request to [info@laundryjet.com](mailto:info@laundryjet.com).

## 3D Design support for Architects and Designers

We provide expert assistance and support for pipe layouts, port locations, and the design of your Laundry Jet System.

## Training, System Support, and Service

We offer expert ongoing technical support to ensure your system operates smoothly throughout its lifecycle. Our comprehensive online training is designed for advanced DIY enthusiasts, general contractors, and home builders. Additionally, we provide live chat and live video assistance—including FaceTime—scheduled in advance to suit your needs.



### Get a Quote

Submit your information through our website's inquiry form to initiate the engagement process. We'll work closely with you to understand your unique requirements. Click here to submit your details: <http://bit.ly/LJquoteandinfo>



# LAUNDRY JET

Laundry Jet | 2001 Challenger Avenue, Suite A | Oroville, CA, USA 95965

+1.800.867.4580 | [www.laundryjet.com](http://www.laundryjet.com) | [info@laundryjet.com](mailto:info@laundryjet.com)

