

PORT INSTALLATION GUIDE

Laundry Jet Ports and Pipe – iTap, Slide, Slide LV, Lift, Lift LV



iTap Port (Cat5/6 for Swift and Plus Vuelo).



Slide Port (Cat 5/6 for Swift and Plus Vuelo)

Slide LV Port (low voltage) for Remote Eco and Express Vuelo



Lift Port (Cat 5/6 for Swift and Plus Vuelo)

Lift LV Port (low voltage) for Remote Eco and Express Vuelo

January 2026

Version 2.0

– iTap, Slide, Slide LV, Lift, Lift LV

Document Revisions

Date	Version Number	Document Changes
3/13/2023	1.0 Rev	iSense, Slide and Lift Port - Rev 3 Units
1/12/2026	2.0 Rev	iTap Slide and Lift Port - Rev 5 Units + Pipe and Connectors



FOR ADDITIONAL HELP INCLUDING
INSTRUCTIONAL VIDEOS USE THE QR CODE ABOVE

Table of Contents

1	Introduction	4
2	Products	5
3	Pipe Installation Overview	6-9
	3 - Components & Tools	6
	3.1 - Pipe Installation Standards	7
	3.2 - Port Drop Installation	8
	3.3 - Connecting Port 90 to the Pipe.....	9
4	iTap Port Installation	10-14
	4.1 - Components & Tools	10
	4.2 - iTap Port 90 Mount Bracket.....	11
	4.3 - iTap Port Sheetrock Template	12
	4.4 - iTap Port Assembly	13
	4.5 - iTap Port Installation and Use Notes	14
5	Slide Port and Slide Port LV Installation	15-19
	5.1 - Components & Tools	15
	5.2 - Slide and Slide LV Port Bracket	16
	5.3 - Slide and Slide LV Sheetrock Template.....	17
	5.4 -Slide and Slide LV Port Assembly.....	18
	5.5 - Slide and Slide LV Port Installation and Use Notes	19
6	Lift Port and Lift Port LV Installation	20-24
	6.1 - Components & Tools	20
	6.2 - Lift and Lift LV Port Bracket	21
	6.3 - Lift and Lift LV Sheetrock Template	22
	6.4 - Lift and Lift LV Port Assembly	23
	6.5 - Lift and Lift LV Port Installation and Use Notes	24
7	Warranty	25
8	Engineering Prints	26-34

Introduction

A Laundry Jet system is installed in three or four main steps, typically in this order:

1. Install the PVC pipe and fittings connecting the ports to the laundry room (via attic or crawl space)
2. Install the Laundry Jet unit (laundry room wall, cabinet, or remote location such as an attic or crawl space)
3. Install the Laundry Jet ports in bedrooms, bathrooms, or dressing rooms
4. (Optional) Install the Laundry Jet Return Unit for clean-laundry delivery

Vacuum Laundry Pipe

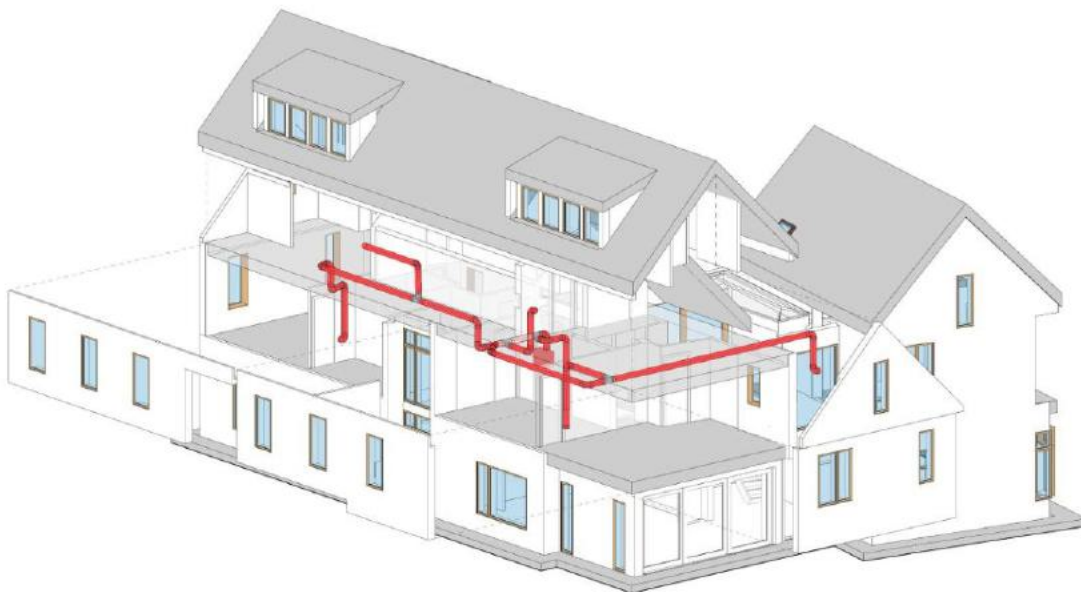
Laundry Jet specifies 6" SDR35 White Solvent Weld PVC pipe and fittings. This piping is light weight to make install quick and easy.

PVC piping is designed to have a smooth transition in between fittings and connections which ensures that clothing, bedding and towels will travel smoothly to the laundry room.

Pipe & Fittings

6" SDR35 White Solvent Weld PVC pipe 10' x 6"

All Fittings are 6" SDR35 White Solvent Weld



2 Products

The Laundry Jet iTap Port is our most advanced automatic port design, fully compatible with both the Swift Vuelo and Plus Vuelo systems. Its intelligent *auto-close* feature delivers effortless, button-touch convenience.

With a single press, (double press if upgrading older iSense ports on non-Vuelo systems) the port opens automatically, activates the system, and begins the 30 second cycle. After the final item is sent, the user can simply walk away—the iTap Port closes itself at the end of the cycle, leaving it ready for the next use.

Constructed from a sleek, silk-finish white material, the iTap Port blends modern styling with smart automation, making it a standout in the Laundry Jet lineup and our premium, top-of-the-range port solution.



The Laundry Jet Slide Port is our mid-range manual port, available in low voltage (for Express Vuelo) and CAT5/6 (for Swift and Plus Vuelo). It offers an economical entry point while maintaining the look, quality, and performance of the Laundry Jet brand. Constructed from durable plastic and screw-mounted to the wall, the Slide Port is simple to install and easy to use. Sliding the door open activates the system; laundry is fed in and automatically transported to the laundry room. Once the cycle completes, the door is gently closed, ready for the next use. The port can be installed in four orientations—left, right, up, or down—providing maximum flexibility to suit site conditions, cabinetry, or door clearances.



The Laundry Jet Lift Port is our entry-level manual port, designed to offer exceptional value while maintaining the clean, modern aesthetics of the Laundry Jet range. It is available in Low Voltage for the Vuelo Express and in Cat-5/6 for the Swift and Plus Vuelo systems. Engineered as an economical yet stylish solution, the Lift Port provides simple and intuitive manual operation. Its high-gloss, premium-grade materials ensure long-lasting durability and a sleek appearance that blends seamlessly into contemporary home design. To use, simply lift and hold the port door open to activate the timed cycle. Laundry—including clothing, bed linens, and even damp towels—can be fed into the port one-handed and is instantly transported to the laundry room. After the final item is inserted and the cycle completes, gently lower the door to close the port to turn off the airflow, leaving it ready for the next use.



3 Components and Tools

Components



Port 90° Assembly



6-inch Wye



6"x10 ft SDR schd 35 Pipe



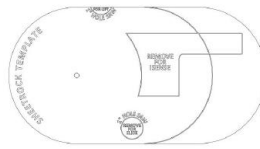
Pipe 6-inch Cleanout & Adapter



6 Inch 45 Degree Elbow



Swept Long 90



Sheetrock Template

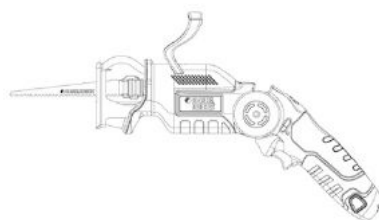


Cable Bundle

Tools



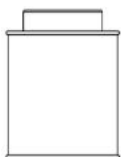
Cordless Drill



Sawzall



Tape Measure



PVC Glue

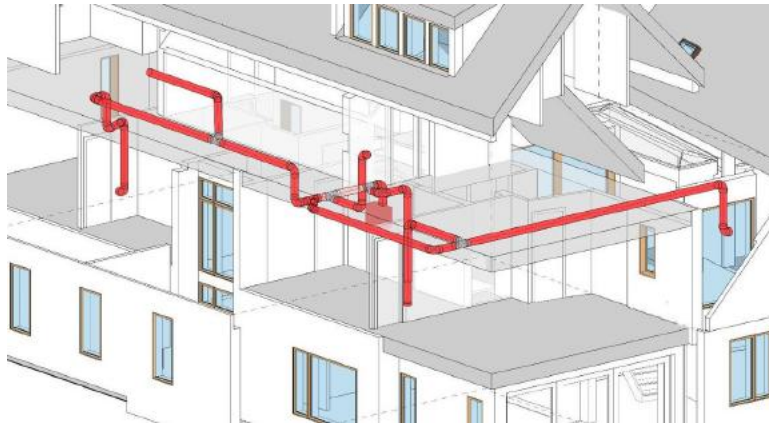


1" Wood Screw



Plumber's Metal Strapping Tape

3.1 Pipe Installation Standards



- All joints ideally should use a minimum entry angle of 45 degrees (space permitting with a break distance of 18 Inches (460 MM). See Figure 1.
- Swept 90-degree turns are also allowed. See figure 2
- Pipe cuts must be straight and de burred before seating.
- Pipe must be completely seated in fitting connections.
- Seal all joints using standard PVC glue. Connections must be glued around 360 degrees to ensure maximum system performance.
- System must be strapped with “plumbers tape” (or equivalent) every 6 feet. Port 90 must be strapped and secured prior to Port installation.
- Install Cleanout ports every 50 feet on angled runs. Straight trunk lines can run up to 100 feet with cleanouts at either end.
- Wye fittings are installed with airflow moving in a single direction toward the location of the Jet Pack
unit. Never use “T” fittings

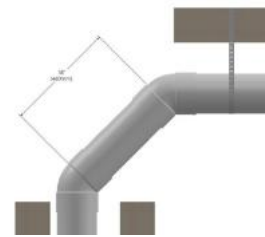


Figure 1



Figure 2

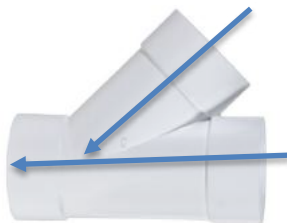
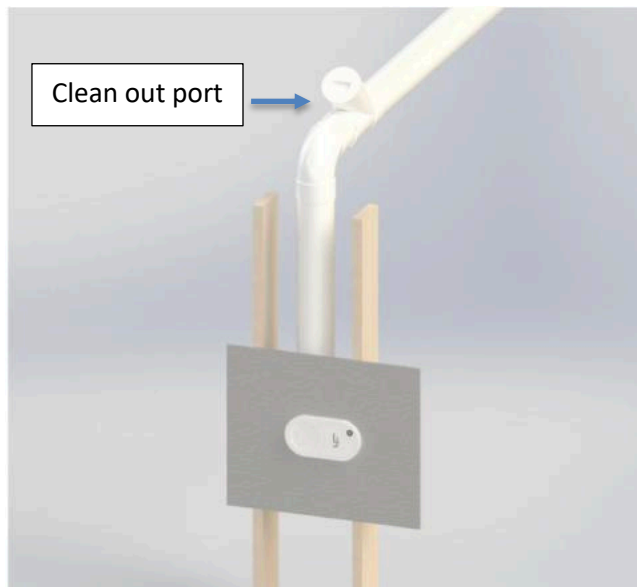


Figure 3

3.2 Port Drop installation

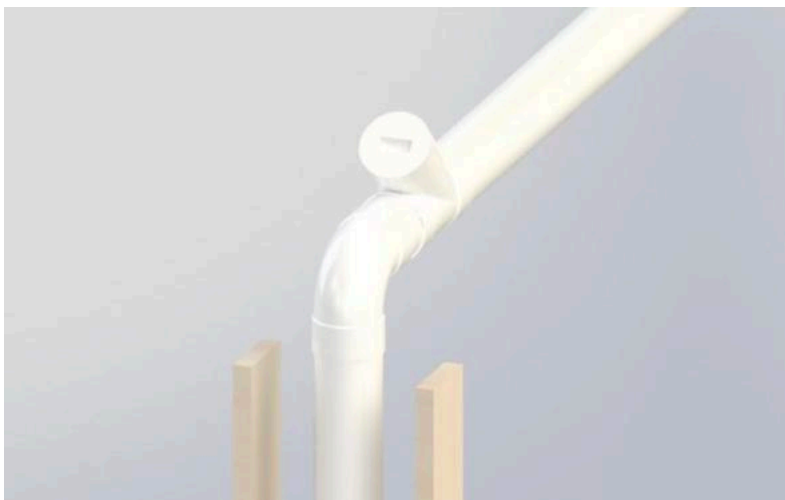


Port Drop Installation

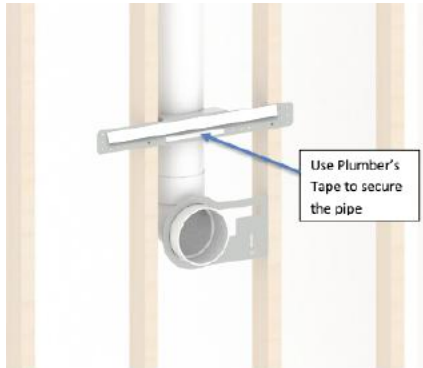
Mount the **Port 90** using the **Pipe Bracket** and **Port Bracket**. Refer to **Page 11** for detailed Port 90 installation instructions.

For the port drop, use a **standard 6" SDR swept 90** fitting. Ensure the drop line is **blocked and securely strapped at the midpoint** for proper support.

Install **clean-out ports every 20–30 feet**, positioning them at **accessible locations** along the pipe run to allow for future maintenance.



3.3 Connecting the Port 90 to the Pipe



Port 90 installation New Construction

- Port 90 must be installed with front face of Port 90 flush with the finished face of interior wall.
- Port 90 must be installed on a plum horizontal port drop line.
- Use the Port 90 Mount Bracket and Plumbers Tape to align and secure the Port 90 to the frame (unless a remodel)

Port 90 installation in Existing Homes and Remodels

Installing a Laundry Jet in an existing home is surprisingly straightforward, even with finished walls. Since the system uses 6.25" (159 mm) piping, we utilize smart routing to maintain your home's aesthetic:

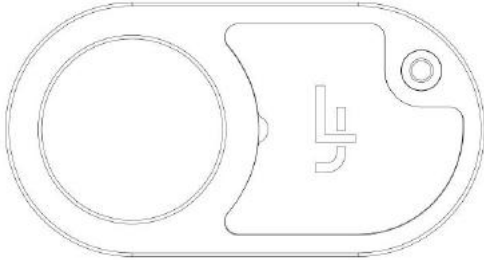
- **Closet Integration:** The most common method is placing the Port on a wall shared with a closet. This allows the pipe to run vertically through the closet interior and directly into the attic or crawl space.
- **Custom Chases:** In rooms without closets or across multiple floors, the pipe is neatly enclosed in a small, matching drywall "chase" (a slim decorative column) to keep it completely hidden.
- **Accessible Routing:** Main pipe runs are tucked away in attics or crawl spaces, ensuring the system remains discreet and easy to service without opening up your main living areas.

Quick Comparison Table

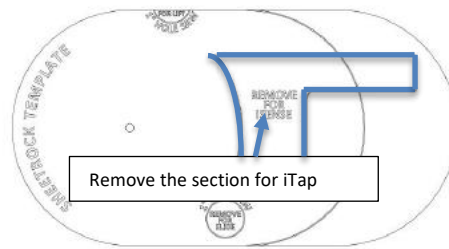
Installation Type	How We Handle the 6.25" Pipe
Closet-Backed Walls	Pipe runs vertically through the closet to the attic/crawl space.
Open Living Areas	Pipe is concealed in a neat, paint-matched drywall chase.
Multi-Story Homes	Vertical runs are boxed in; horizontal runs stay in the attic/basement.
New Construction	Routes are integrated directly into the architectural blueprints.

4.1 Components and Tools

Components



iTap Port



Sheetrock mount Template



Metal Plumbers Tap

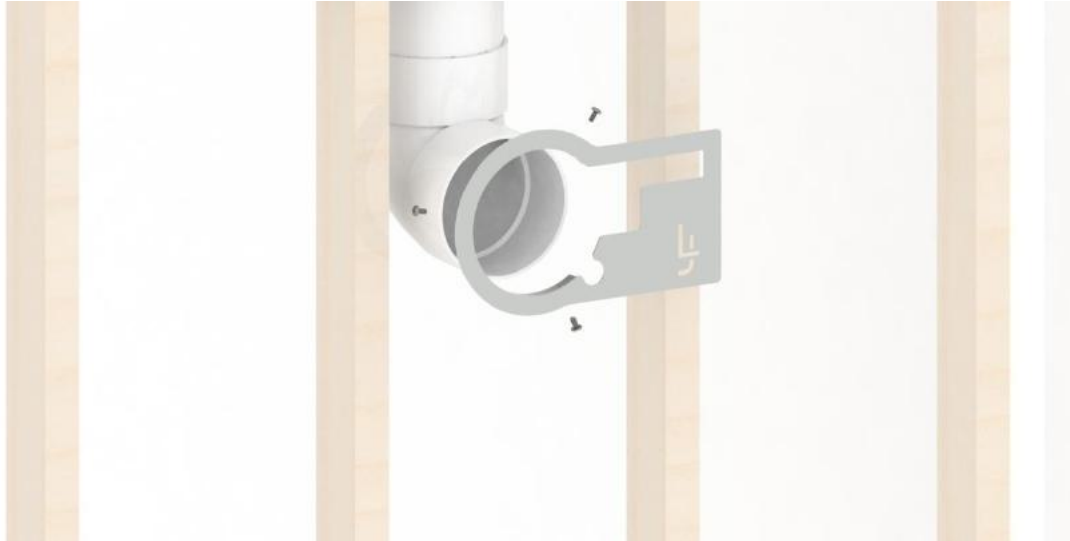


Port 90 Starter Kit



Mount Bracket screws 1-1/2" sheet metal screws 1" wood screw

4.2 Step 1 – Port 90 Mount Bracket



Port 90 Mount Bracket

- Use the Port 90 Mount Bracket to align and secure the Port 90 to the frame
- Set Port height
- Attach 2 pipe clamps
- Set elevation screws
- Do not install ports behind doors or in cupboards

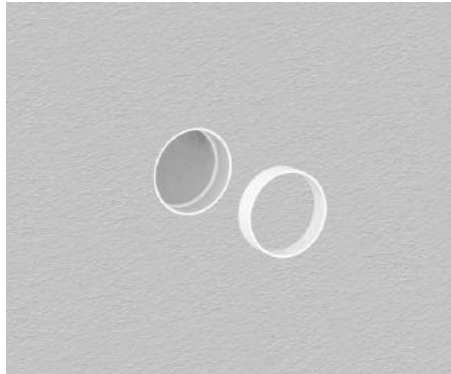
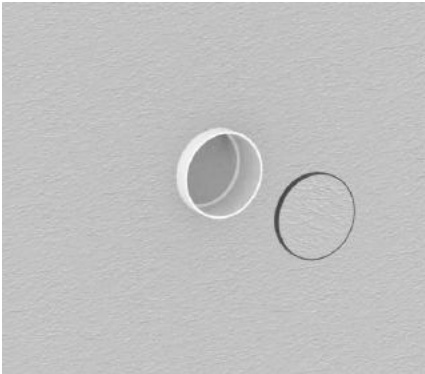


Reverse angle

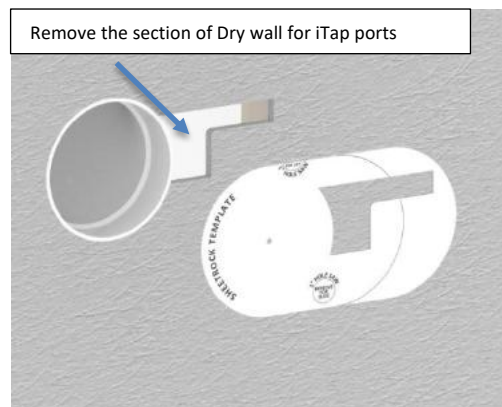
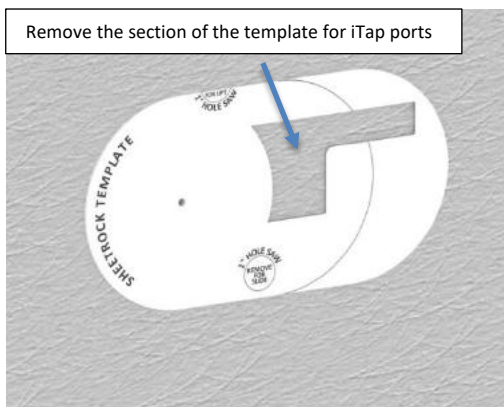
4.3 Step 2 – iTap Sheetrock Template

Sheetrock Template

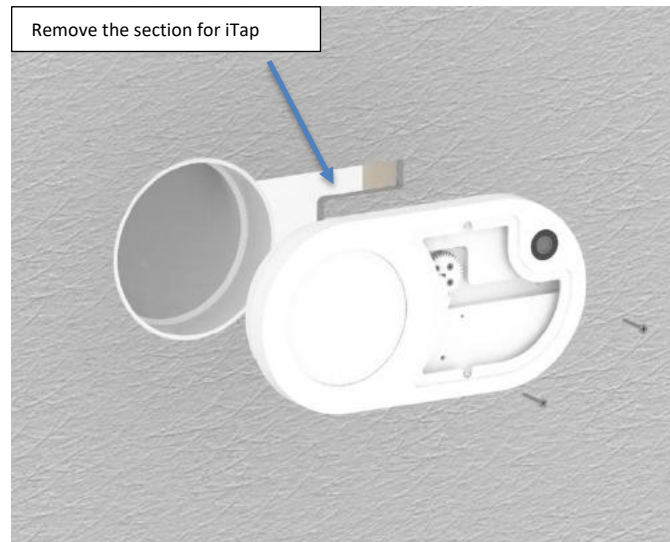
- Install sheetrock over the Port 90 and Port Mount Brackets
- Trim around outside edge of the Port 90 and remove material.
- Cut the Port 90 so that it is flush with the sheetrock.



- Remove the section for ISense/iTap ports from the Sheetrock Template
- Position the round portion on the back of the template into the Port 90
- Using a level use the top horizontal edge to level the template
- Trace around the inside edge of the cutout on the template onto the sheetrock
- Cut and remove this section

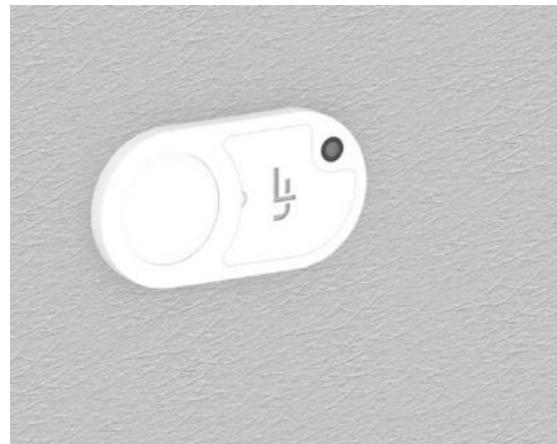


4.4 Step 3 – iTap Port Assembly



iTap Port Assembly

- Connect the Cat5/6 male RJ45 connector cable (cables not supplied due to variable non-standard lengths required for your installation) that runs from your Laundry Jet unit to the female connector on back of port
- Remove the front logo plate and position the Port into place
- Align Port for final adjustment using a level
- Attach port using 2 sheet metal screws. NOTE: For proper door function, the screws must be flush and not overtightened as they could squeeze and inhibit the door movement.
- Re-attach the front logo plate



4.5 Important Notes - iTap:

We supply a short, standard 3-ft CAT5/6 test cable to allow you to connect the port directly to the Laundry Jet unit during initial setup. This lets you confirm that both components are operating correctly before connecting to your permanent cable run.

If the system works correctly with the short test cable but not when connected to the main cable run, this usually indicates an issue with the CAT5/6 wiring (such as a short, pinch, or termination fault).

Always connect the port **before** powering on the main system, as the unit runs a start-up scan to detect connected devices.

The **iTap push-button port** is designed to operate **exclusively with CAT5 or CAT6 cable**. Because electrical power is required to open the door, it is compatible **only** with the **Laundry Jet Swift Vuelo** and **Laundry Jet Plus Vuelo** systems.

The **Laundry Jet Remote Eco** and **Laundry Jet Express Vuelo** models are compatible **only** with the **Lift LV** and **Lift LV** ports. (low voltage 2 wire AV cable)

Port Use and Operation:

When connected to an older, non-Vuelo Laundry Jet unit, the port button must be pressed **twice (approx. 0.5 second interval)** to activate the system. When connected to the latest **Vuelo** models, a **single press** of the button will start the **20-second cycle**.

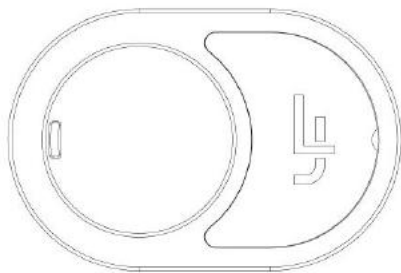
Once the final item has been sent, you may walk away—the system will complete the cycle automatically.

For best performance, avoid overloading the system. Laundry Jet is designed for **intermittent, everyday use**, such as when undressing or stripping beds, rather than moving large volumes of laundry all at once. The system works best when used **little and often**, helping to prevent laundry build-up in bedrooms or around port location and the Laundry Jet unit automatically Empties

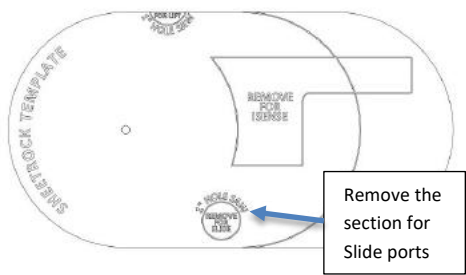


5.1 Components and Tools

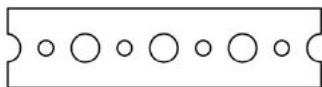
Components



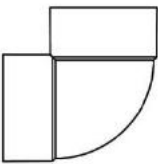
Slide Port and Slide Port LV



Sheetrock Template



Metal Plumbers Tape



Port 90



Port Mount Bracket



Mount Bracket screws

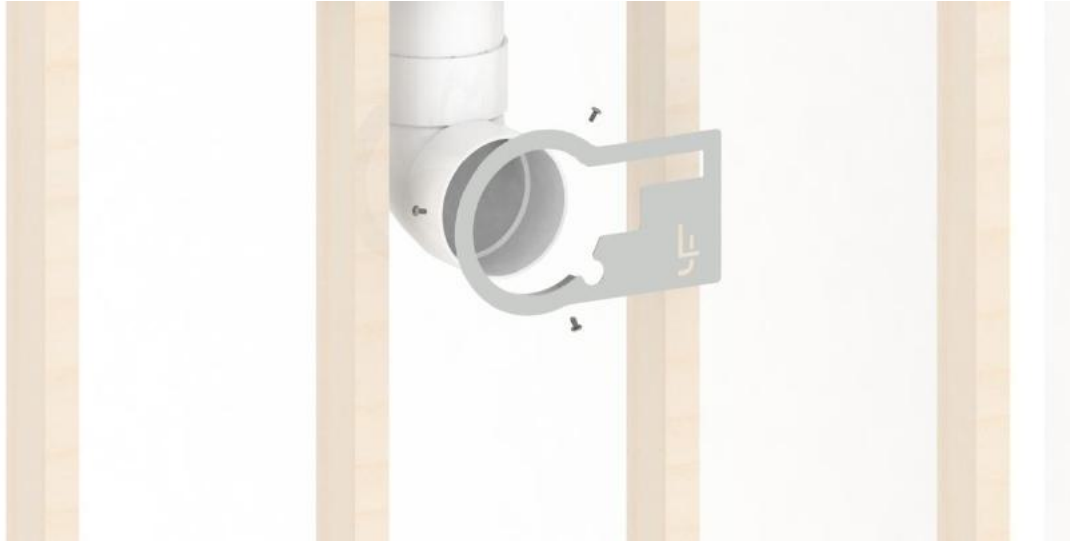


1-1/2" sheet metal screws



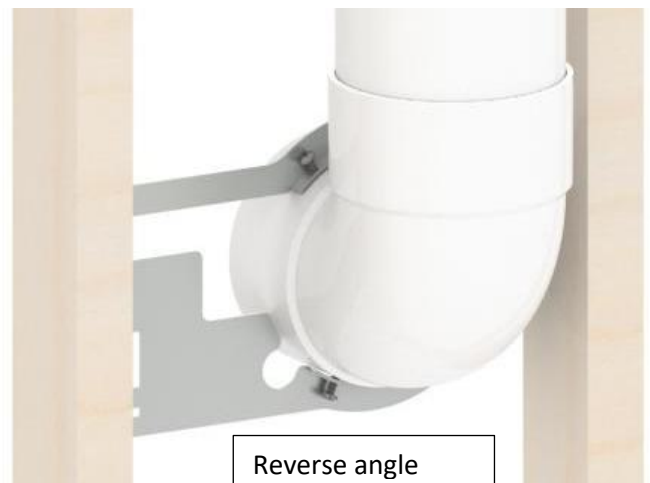
1" wood screw

5.2 Step 1 – Port 90 Mount Bracket



Port 90 Mount Bracket

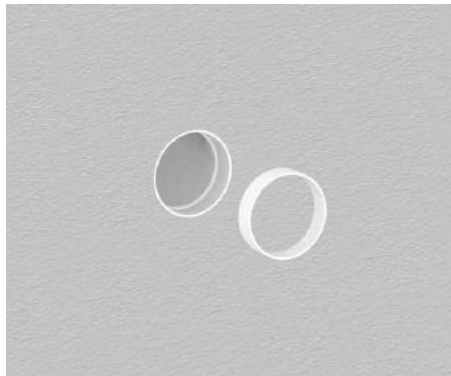
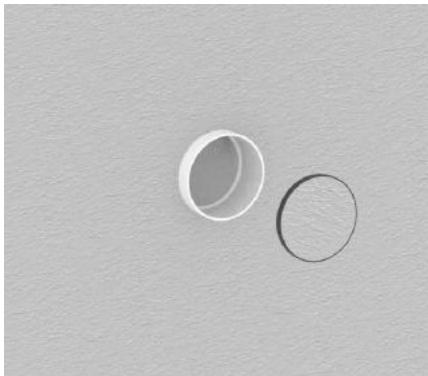
- Use the Port 90 Mount Bracket to align and secure the Port 90 to the frame
- Set Port height
- Attach 2 pipe clamps
- Set elevation screws
- Do not install ports behind doors or in cupboards



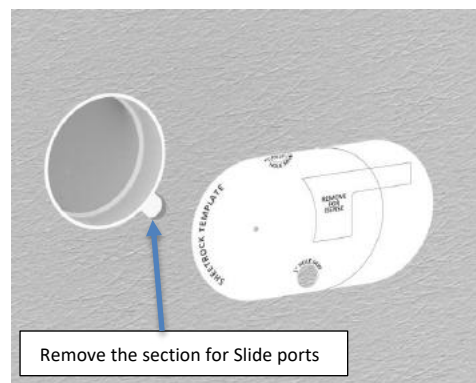
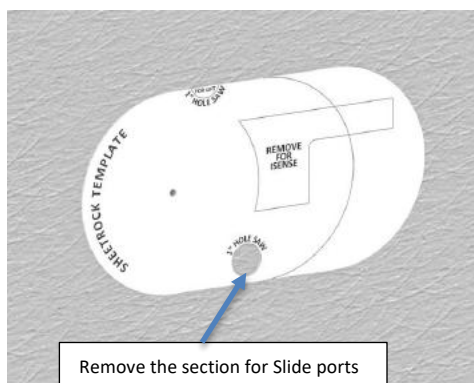
5.3 Step 2 – Slide Port Sheetrock Template

Sheetrock Template

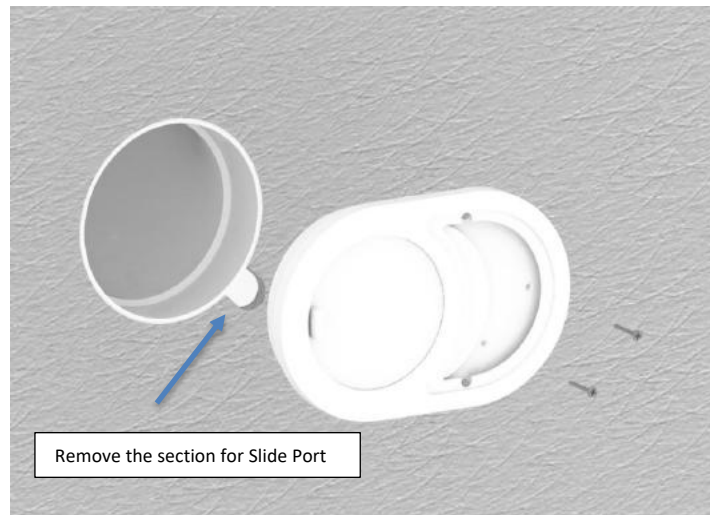
- Install sheetrock over the Port 90 and Port Mount Brackets
- Trim around outside edge of the Port 90 and remove material.
- Cut the Port 90 so that it is flush with the sheetrock.



- Remove the section for Slide ports from the Sheetrock Template
- Position the round portion on the back of the template into the Port 90
- Using a level use the top horizontal edge to level the template
- Trace around the inside edge of the cutout on the template onto the sheetrock
- Cut and remove this section

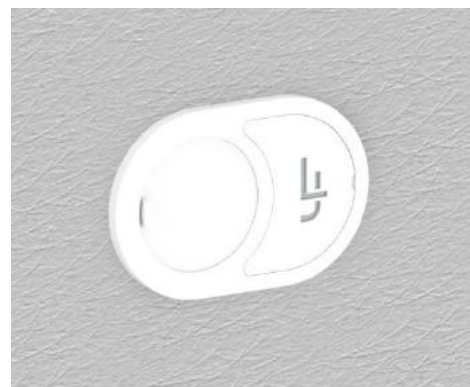


5.4 Step 3 – Slide Port Assembly



Slide Port Assembly

- Connect the Cat5/6 male RJ45 connector cable (cables not supplied due to variable non-standard lengths required for your installation) or the 2 wire Low voltage AV cable if your Laundry Jet power unit is the Remote Eco or the Express Vuelo. These are the cables that run from your Laundry Jet unit to the female connector on the back of the Slide port
- Remove the front logo plate and position the Port into place
- Align Port for final adjustment using a level
- Attach port using 2 sheet metal screws. **NOTE: For proper door function, the screws must be flush and not overtightened as they could squeeze and inhibit the door movement.**
- Re-attach the front logo plate



5.5 Important Notes – Slide Port and Slide Port LV:

We supply a short, standard 3-ft CAT5/6 test cable to allow you to connect the port directly to the Laundry Jet unit during initial setup. This lets you confirm that both components are operating correctly before connecting to your permanent cable run.

If the system works correctly with the short test cable but not when connected to the main cable run, this usually indicates an issue with the CAT5/6 wiring (such as a short, pinch, or termination fault).

Always connect the port **before** powering on the main system, as the unit runs a start-up scan to detect connected devices.



Figure 4

The **Slide Port** is designed to operate **exclusively with CAT5 or CAT6 cable** and it is compatible **only** with the **Laundry Jet Swift Vuelo** and **Laundry Jet Plus Vuelo** systems. The **Laundry Jet Remote Eco** and **Laundry Jet Express Vuelo** models are compatible **only** with the **Slide LV** and **Slide LV** ports, which operate on **low-voltage, 2-wire AV cable**.

Because these ports use **2-wire AV cabling**, they connect via **pinch-type connectors** (see Figure 1). This wiring method allows ports to be **daisy-chained**, making it possible to install **more than two ports** on a Remote Eco or Express Vuelo system—provided the **furthest pipe run does not exceed 150 ft (45 m)**.

To reduce cabling, one port may be linked directly to another, rather than running a separate cable from each port back to the Remote Eco or Express Vuelo unit.

5.5.1 Slide and Slide Port LV Use and Operation

As the name suggests, simply **Slide the port door open** to start the system. Feed items into the port and allow them to be transported automatically.

If you have a large volume of laundry, divide it into **smaller loads** so the catch chamber inside the Laundry Jet unit can unload properly and efficiently without becoming overfilled. The chamber empties automatically at the end of each cycle.

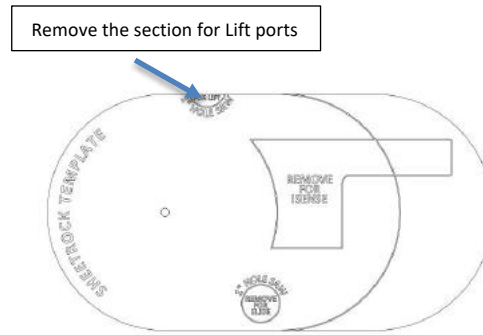
After sending the final item, **wait approximately 5 seconds** before closing the port door. Closing the door turns the system off, and this short pause ensures the last item has sufficient time to travel fully to the laundry room.

6.1 Components and Tools

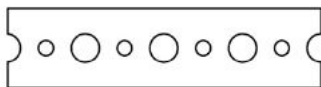
Components



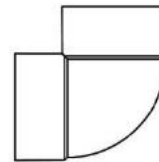
Lift Port and Lift Port LV



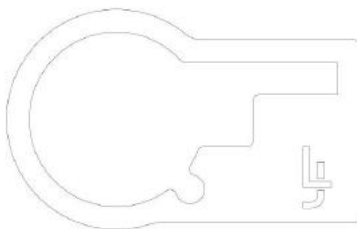
Sheetrock Template



Metal Plumbers Tape



Port 90



Port Mount Bracket



Mount Bracket screws

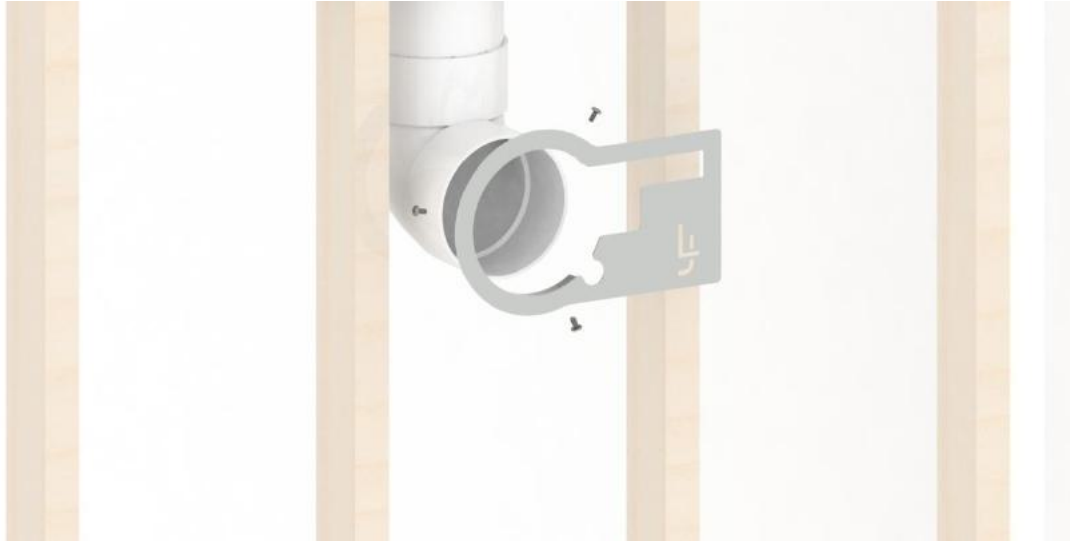


1-1/2" sheet metal screws



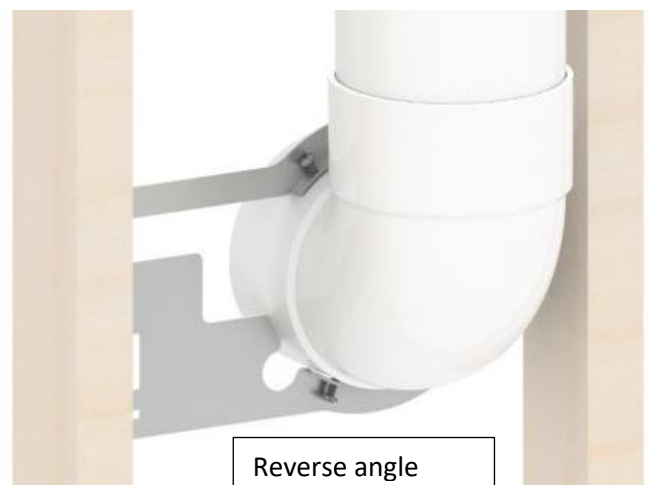
1" wood screw

6.2 Step 1 – Port 90 Mount Bracket



Port 90 Mount Bracket

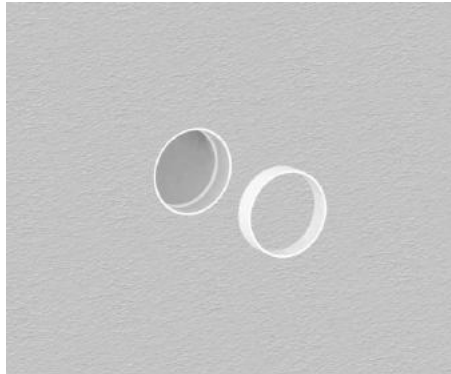
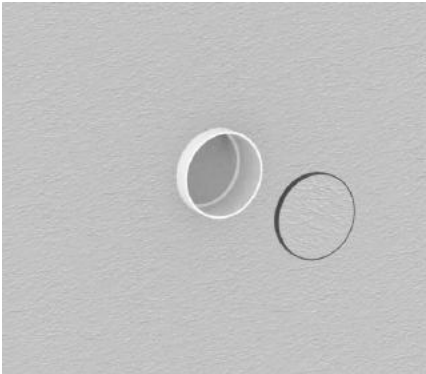
- Use the Port 90 Mount Bracket to align and secure the Port 90 to the frame
- Set Port height
- Attach 2 pipe clamps
- Set elevation screws
- Do not install ports behind doors or in cupboards



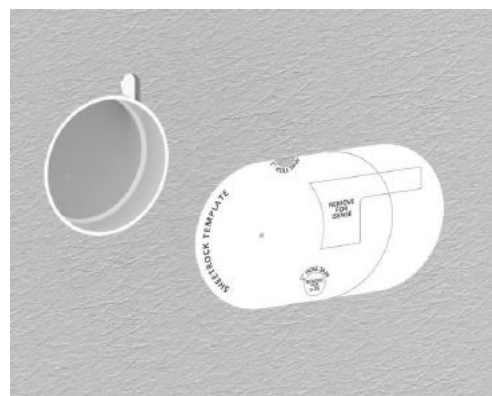
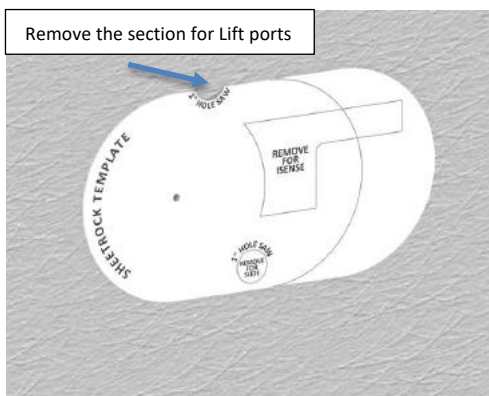
6.3 Step 2 – Lift Port Sheetrock Template

Sheetrock Template

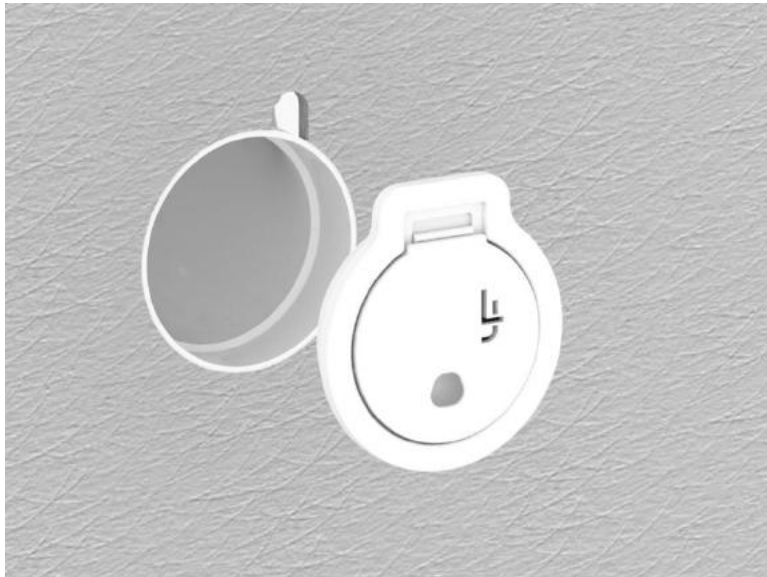
- Install sheetrock over the Port 90 and Port Mount Brackets
- Trim around outside edge of the Port 90 and remove material.
- Cut the Port 90 so that it is flush with the sheetrock.



- Remove the small section for the Lift Port from the Sheetrock Template
- Position the round portion on the back of the template into the Port 90
- Using a level use the top horizontal edge to level the template
- Trace around the inside edge of the cutout on the template onto the sheetrock
- Cut and remove this section



6.4 Step 3 – Lift Port Assembly



Lift Port Assembly

- Connect the Cat5/6 male RJ45 connector cable (cables not supplied due to variable non-standard lengths required for your installation) or the 2 wire Low voltage AV cable if your Laundry Jet power unit is the Remote Eco or the Express Vuelo. These are the cables that run from your Laundry Jet unit to the female connector on the back of the Lift port
- Position the Port into place
- Align Port for final adjustment using a level



6.5 Important Notes – Lift Port and Lift Port LV:

We supply a short, standard 3-ft test cable to allow you to connect the port directly to the Laundry Jet unit during initial setup. This lets you confirm that both components are operating correctly before connecting to your permanent cable run.

If the system works correctly with the short test cable but not when connected to the main cable run, this usually indicates an issue with the wiring (such as a short, pinch, or termination fault).

Always connect the port **before** powering on the main system, as the unit runs a start-up scan to detect connected devices.

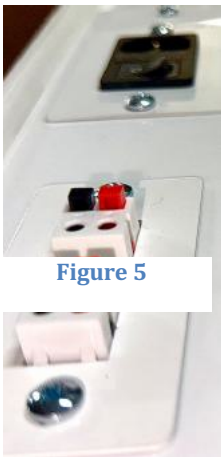


Figure 5

The **Lift Port** is designed to operate **exclusively with CAT5 or CAT6 cable** and it is compatible **only** with the **Laundry Jet Swift Vuelo** and **Laundry Jet Plus Vuelo** systems. The **Laundry Jet Remote Eco** and **Laundry Jet Express Vuelo** models are compatible **only** with the **Lift LV** and **Lift LV** ports, which operate on **low-voltage, 2-wire AV cable**.

Because these ports use **2-wire AV cabling**, they connect via **pinch-type connectors** (see Figure 1). This wiring method allows ports to be **daisy-chained**, making it possible to install **more than two ports** on a Remote Eco or Express Vuelo system—provided the **furthest pipe run does not exceed 150 ft (45 m)**. To reduce cabling when using the Lift LV port with a Remote Eco or Express Vuelo, one port may be linked directly to another, rather than running a separate cable from each port back to the Remote Eco or

Express Vuelo unit.

6.5.1 Lift and Lift Port LV Use and Operation

As the name suggests, simply **Lift the port door open** to start the system. Try not to over open or put un needed pressure on the top hinge of the door. Feed items into the port with your free hand and allow them to be transported automatically.

If you have a large volume of laundry, divide it into **smaller loads** so the catch chamber inside the Laundry Jet unit can unload properly and efficiently without becoming overfilled. The chamber empties automatically at the end of each cycle.

After sending the final item, **wait approximately 5 seconds** before closing the port door. Closing the door turns the system off, and this short pause ensures the last item has sufficient time to travel fully to the laundry room.

7 Warranty

Lifetime Limited Warranty

Laundry Jet® is protected by a Limited Lifetime Warranty for the original purchaser, valid from the date of purchase, provided the system remains at its original installation location and the warranty registration form is completed at:

<https://www.laundryjet.com/warranty>

Warranty Coverage

- Limited Lifetime Warranty on the metal body
- Three (3) Year Limited Warranty on the Jet Pack PosiFlow™ motor
- Three (3) Year Limited Warranty on Laundry Jet ports

This warranty covers defects in materials and workmanship under normal residential use, when installed and operated in accordance with Laundry Jet installation and operating instructions.

Exclusive Warranty

THIS WARRANTY IS THE SOLE AND EXCLUSIVE WARRANTY OF LIFEFLOW, LLC – LAUNDRY JET. ALL IMPLIED WARRANTIES, INCLUDING MERCHANTABILITY OR FITNESS FOR A PARTICULAR PURPOSE, ARE LIMITED IN DURATION TO THE APPLICABLE WARRANTY PERIOD STATED ABOVE.

Warranty Claims & Service

1. In the event of a suspected defect:
2. Contact the selling authorized Laundry Jet Dealer or Laundry Jet Technical Support.
3. The customer may be required to return the allegedly defective component to Laundry Jet or an authorized service facility for inspection.
4. Customer is responsible for shipping the product to Laundry Jet for evaluation.
5. If the product is confirmed defective, Laundry Jet will, at its sole option, repair, replace, or credit the defective part and cover the cost of return shipping.
6. If no defect is found, inspection, handling, and return shipping costs may apply.
7. Warranty service must be performed by an authorized Laundry Jet Dealer using genuine Laundry Jet replacement parts.

Parts-Only Coverage

This warranty covers parts only. Labor, removal, reinstallation, cabinetry, drywall, electrical work, and any associated service or repair costs are not covered.

Exclusions

This warranty does not cover pipe or fittings, normal wear and tear, commercial or institutional use, drywall dust, misuse, abuse, neglect, accidents, acts of God, improper installation, modification, alteration, improper operation, or failure to maintain the system.

Limitation of Liability

LIFEFLOW, LLC – LAUNDRY JET SHALL NOT BE LIABLE FOR ANY INCIDENTAL, CONSEQUENTIAL, OR SPECIAL DAMAGES ARISING FROM THE USE OR INABILITY TO USE THIS SYSTEM, EXCEPT WHERE PROHIBITED BY LAW.

Some states or provinces do not allow limitations on implied warranties or damages; therefore, these limitations may not apply to you.

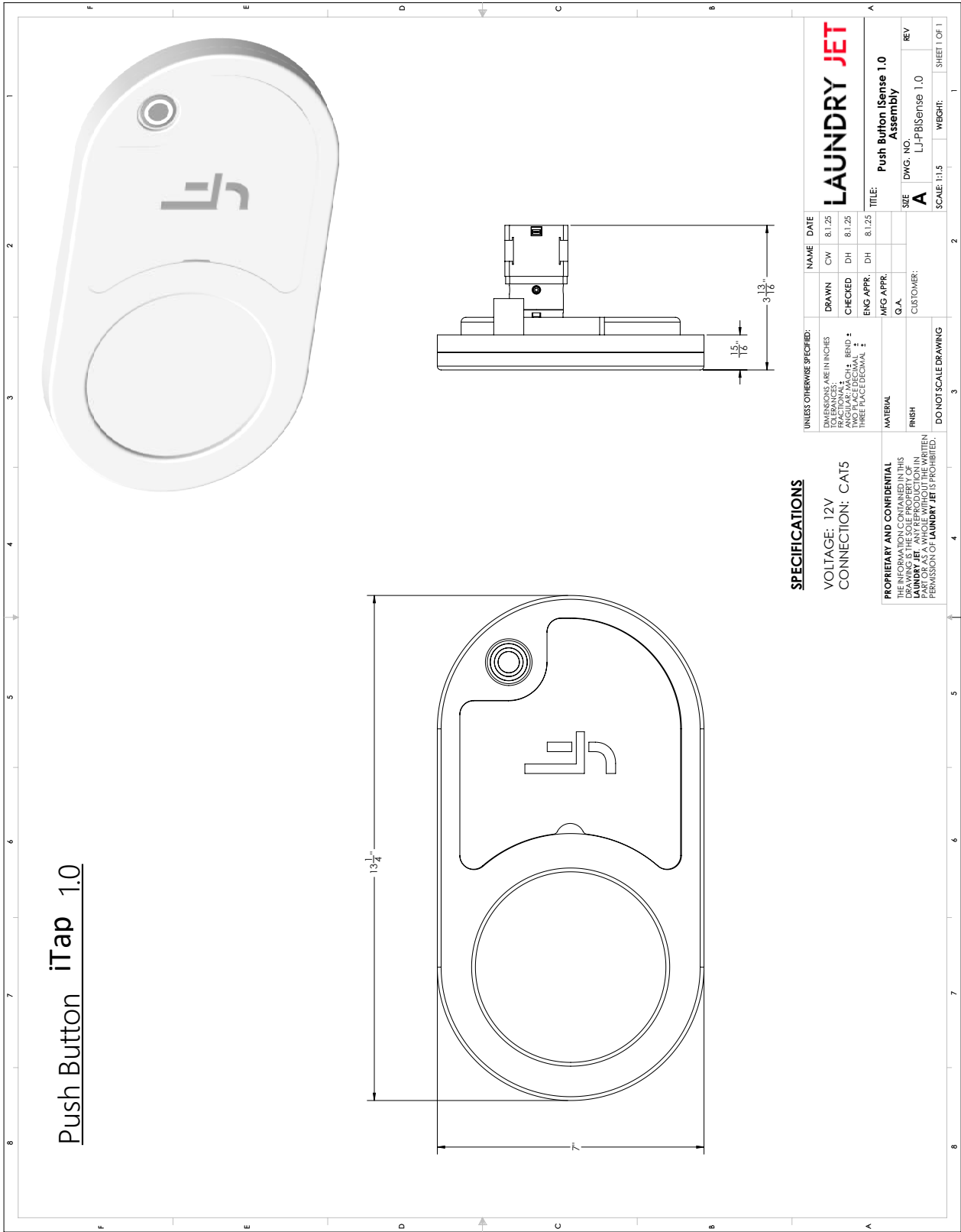
Legal Rights & Geographic Scope

This warranty gives you specific legal rights, and you may have additional rights which vary by state or province.

This Limited Warranty applies to installations in the United States and Canada only. For coverage outside these regions, consult your authorized Laundry Jet Dealer.

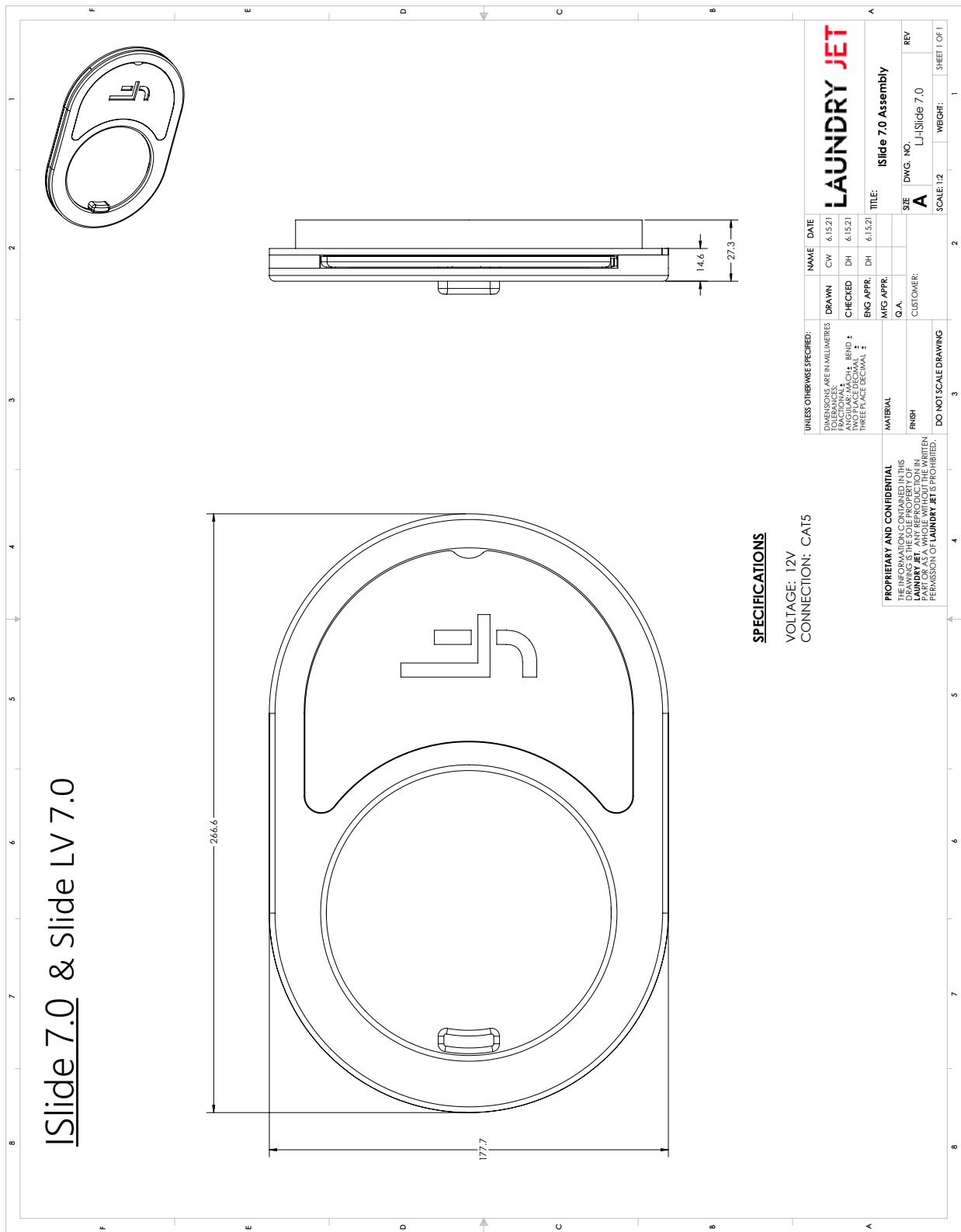
Other Components

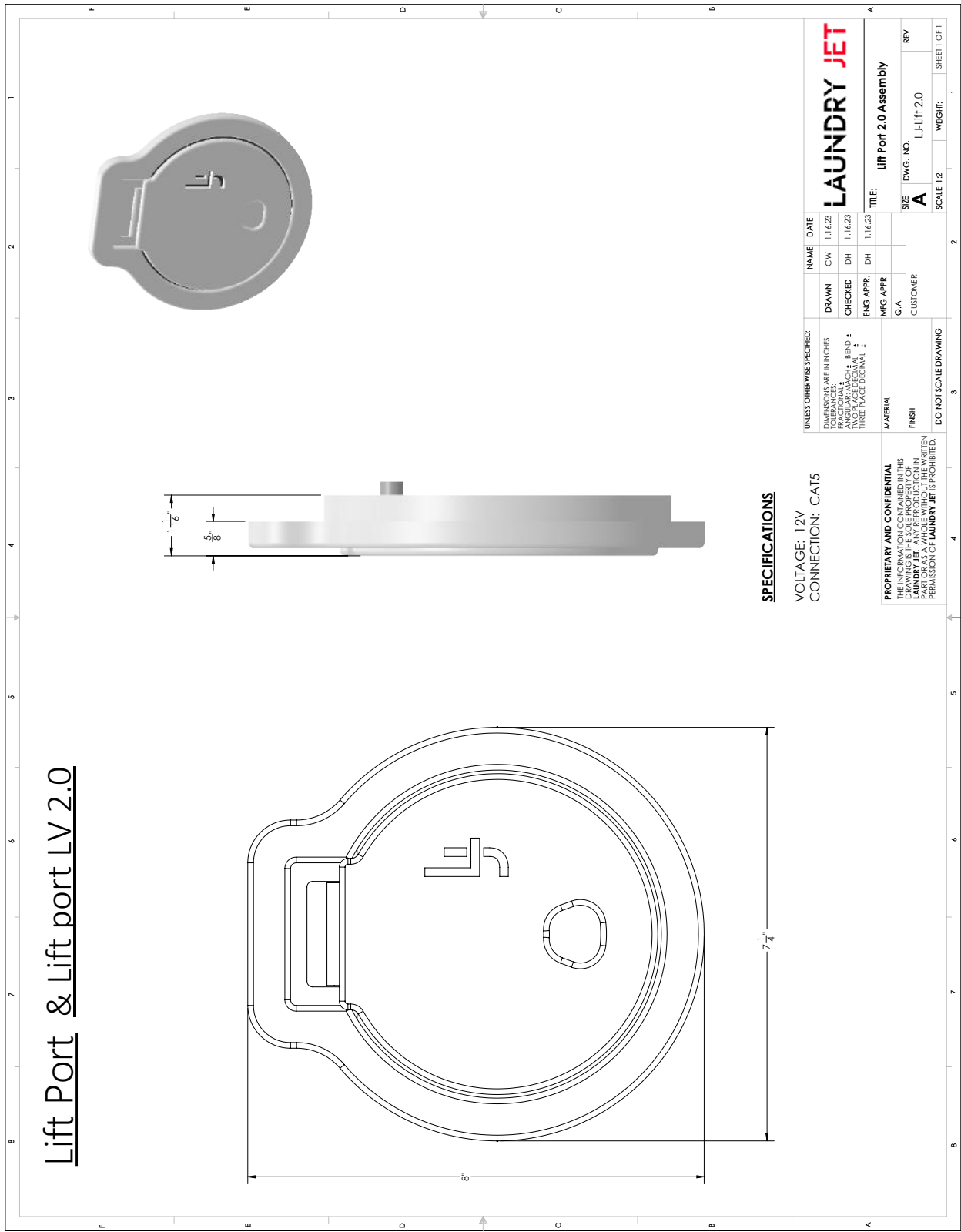
Other components and optional accessories may be covered by separate warranties. Refer to the documentation supplied with those items.

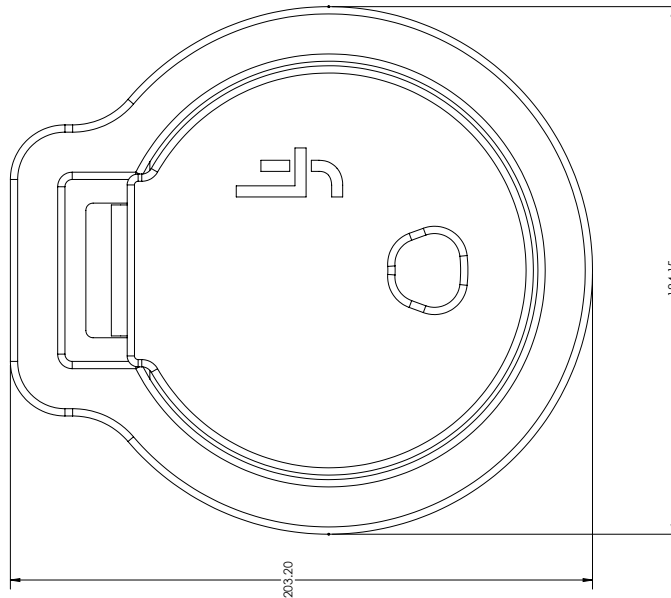












VOLTAGE: 12V
CONNECTION: CAT5

[illegible]

