

LJ PLUS VUELO INSTALLATION GUIDE

Laundry Jet Plus Vuelo - In Cabinet ...

or Wall Mounted



January 2026

Version 2.0

Rev 1.0

*Laundry Jet
2001 Challenger Avenue
Oroville, CA, 95965, USA*

Document Revisions

Date	Version Number	Document Changes
1/12/2026	1.0 Rev	Plus Vuelo



FOR ADDITIONAL HELP INCLUDING
INSTRUCTIONAL VIDEOS USE THE QR CODE ABOVE



Table of Contents

1	Introduction	4
2	Products	5
3	Pipe Installation Overview	6-9
	3 - Components & Tools	6
	3.1 - Pipe Installation Standards	7
	3.2 - Port Drop Installation	8
	3.3 - Port 90 and Pipe location options	9
4	Plus Vuelo Installation.....	10-20
	4.1 - Components & Tools	10
	4.2 - Plus Vuelo Pipe Drop	11
	4.3 - Cabinet modification	12-15
	4.4 - Blower Pod Installation	16-17
	4.5 - Initial connection, test and setup... ..	18
7	Warranty	19
8	Engineering Prints	20-21

1. Introduction

A Laundry Jet system is installed in three or four main steps, typically in this order:

1. Install the PVC pipe and fittings connecting the ports to the laundry room (via attic or crawl space)
2. Install the Laundry Jet unit (laundry room wall, cabinet, or remote location such as an attic or crawl space)
3. Install the Laundry Jet ports in bedrooms, bathrooms, or dressing rooms
4. (Optional) Install the Laundry Jet Return Unit for clean-laundry delivery

Vacuum Laundry Pipe

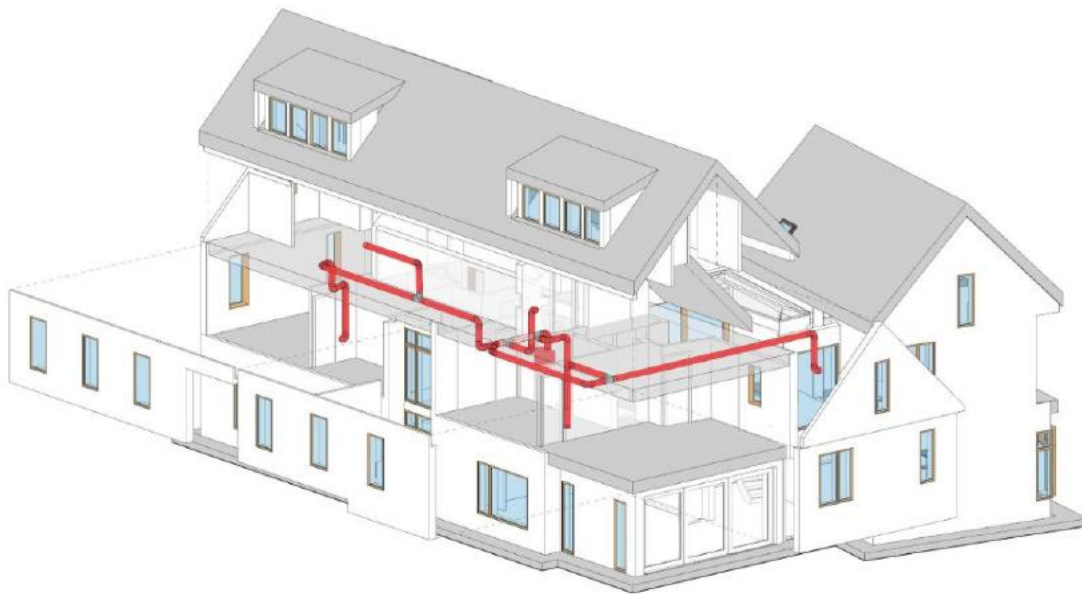
Laundry Jet specifies 6" SDR35 White Solvent Weld PVC pipe and fittings. This piping is light weight to make install quick and easy.

PVC piping is designed to have a smooth transition in between fittings and connections which ensures that clothing, bedding and towels will travel smoothly to the laundry room.

Pipe & Fittings

6" SDR35 White Solvent Weld PVC pipe 10' x 6"

All Fittings are 6" SDR35 White Solvent Weld



2. Product - Plus Vuelo

The Laundry Jet **Plus Vuelo** integrates seamlessly into any custom laundry room design and is our top of the range model in terms of custom style, capacity and number of ports. The Plus Vuelo has many upgrades from its predecessor including power, speed, accessibility, capacity, internal cabling, vent position and PCB and installs inside your own custom cabinetry to maintain the overall aesthetic in your laundry room.



The Plus Vuelo can utilize all styles of Cat 5/6 connector Laundry Jet Ports (manual slide to open and close or button activated) and has an automated cycle which allows the user to insert the clothes, towels, or bedding and walk away leaving it immediately ready to be used again. The Laundry Jet Plus Vuelo is the highest capacity model and handles up to 8 different locations, at the highest speeds yet.

3 Components and Tools

Components



Assembly



6-inch Wye



6"x10 ft SDR schd 35 Pipe



Pipe 6-inch Cleanout & Adapter

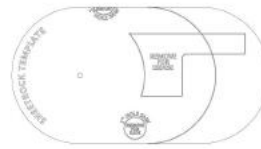
Port 90°



6 Inch 45 Degree Elbow



Swept Long 90



Sheetrock Template

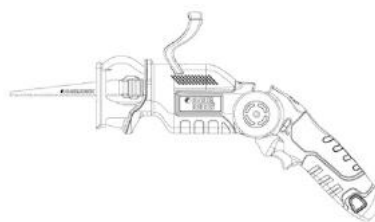


Cable Bundle

Tools



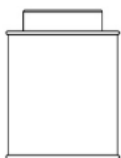
Cordless Drill



Sawzall



Tape Measure



PVC Glue

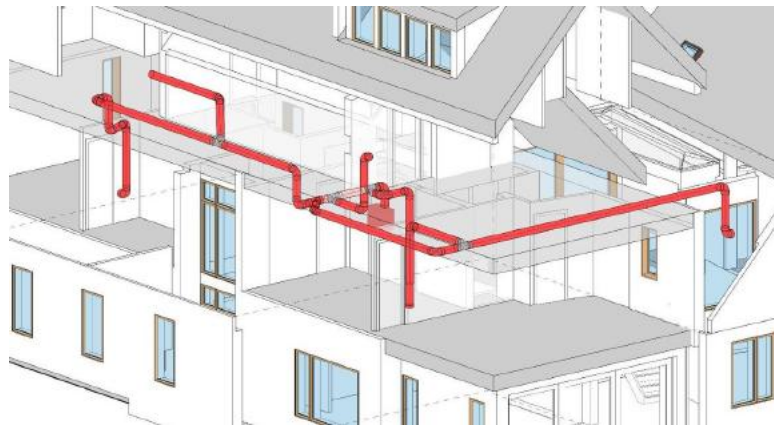


1" Wood Screw



Plumber's Metal Strapping Tape

3.1 Pipe Installation Standards



- All joints ideally should use a minimum entry angle of 45 degrees (space permitting with a break distance of 18 Inches (460 MM)). See Figure 1.
- Swept 90-degree turns are also allowed. See figure 2
- Pipe cuts must be straight and de burred before seating.
- Pipe must be completely seated in fitting connections.
- Seal all joints using standard PVC glue. Connections must be glued around 360 degrees to ensure maximum system performance.
- System must be strapped with plumbers' tape (or equivalent) every 6 feet. Port 90 must be strapped and secured prior to Port installation.
- Install Cleanout ports every 50 feet on angled runs. Straight trunk lines can run up to 100 feet with cleanouts at either end.
- Wye fittings are installed with airflow moving in a single direction toward the location of the Jet Pack unit.
Never use "T" fittings

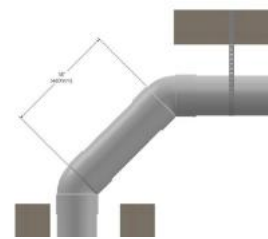


Figure 1



Figure 2

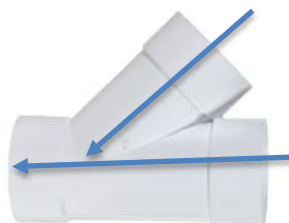
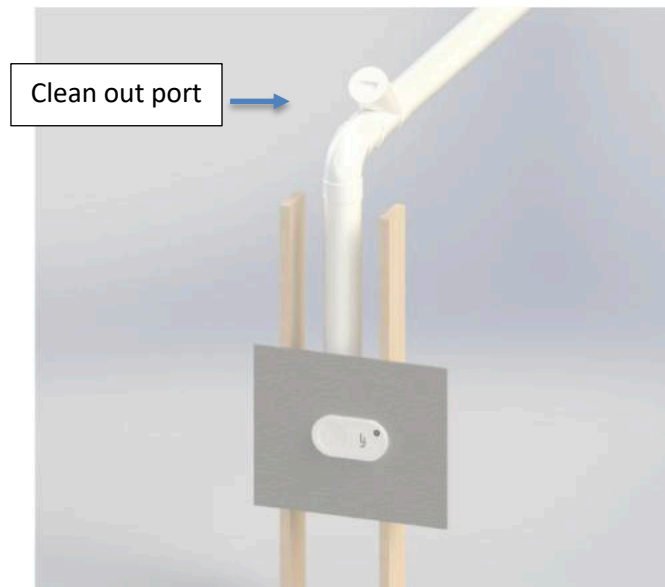


Figure 3

3.2 Port Drop installation



Port Drop Installation

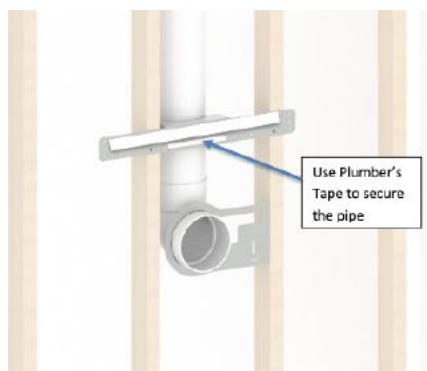
Mount the **Port 90** using the **Pipe Bracket** and **Port Bracket**. Refer to **Page 11** for detailed Port 90 installation instructions.

For the port drop, use a **standard 6" SDR swept 90** fitting. Ensure the drop line is **blocked and securely strapped at the midpoint** for proper support.

Install **clean-out ports every 20–30 feet**, positioning them at **accessible locations** along the pipe run to allow for future maintenance.



3.3 Port 90 and Pipe location options



Port 90 installation New Construction

- Port 90 must be installed with front face of Port 90 flush with the finished face of interior wall.
- Port 90 must be installed on a plum horizontal port drop line.
- Use the Port 90 Mount Bracket and Plumbers Tape to align and secure the Port 90 to the frame (unless a remodel)

Port 90 installation in Existing Homes and Remodels

Installing a Laundry Jet in an existing home is surprisingly straightforward, even with finished walls. Since the system uses 6.25" (159 mm) piping, we utilize smart routing to maintain your home's aesthetic:

- **Closet Integration:** The most common method is placing the Port on a wall shared with a closet. This allows the pipe to run vertically through the closet interior and directly into the attic or crawl space.
- **Custom Chases:** In rooms without closets or across multiple floors, the pipe is neatly enclosed in a small, matching drywall "chase" (a slim decorative column) to keep it completely hidden.
- **Accessible Routing:** Main pipe runs are tucked away in attics or crawl spaces, ensuring the system remains discreet and easy to service without opening up your main living areas.

Installation Type	How We Handle the 6.25" Pipe
Closet-Backed Walls	Pipe runs vertically through the closet to the attic/crawl space.
Open Living Areas	Pipe is concealed in a neat, paint-matched drywall chase.
Multi-Story Homes	Vertical runs are boxed in; horizontal runs stay in the attic/basement.
New Construction	Routes are integrated directly into the architectural blueprints.

4.1 Components and Tools

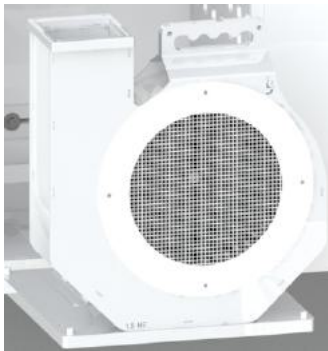
Components



Plus Jet Pack



Plus Jet Pack Front Panel removed with Pod



Plus Jet Pack Blower Pod



8 port top RJ 45 Cat 5/6 Connector

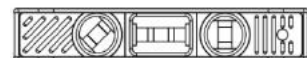
Tools



Cordless Drill



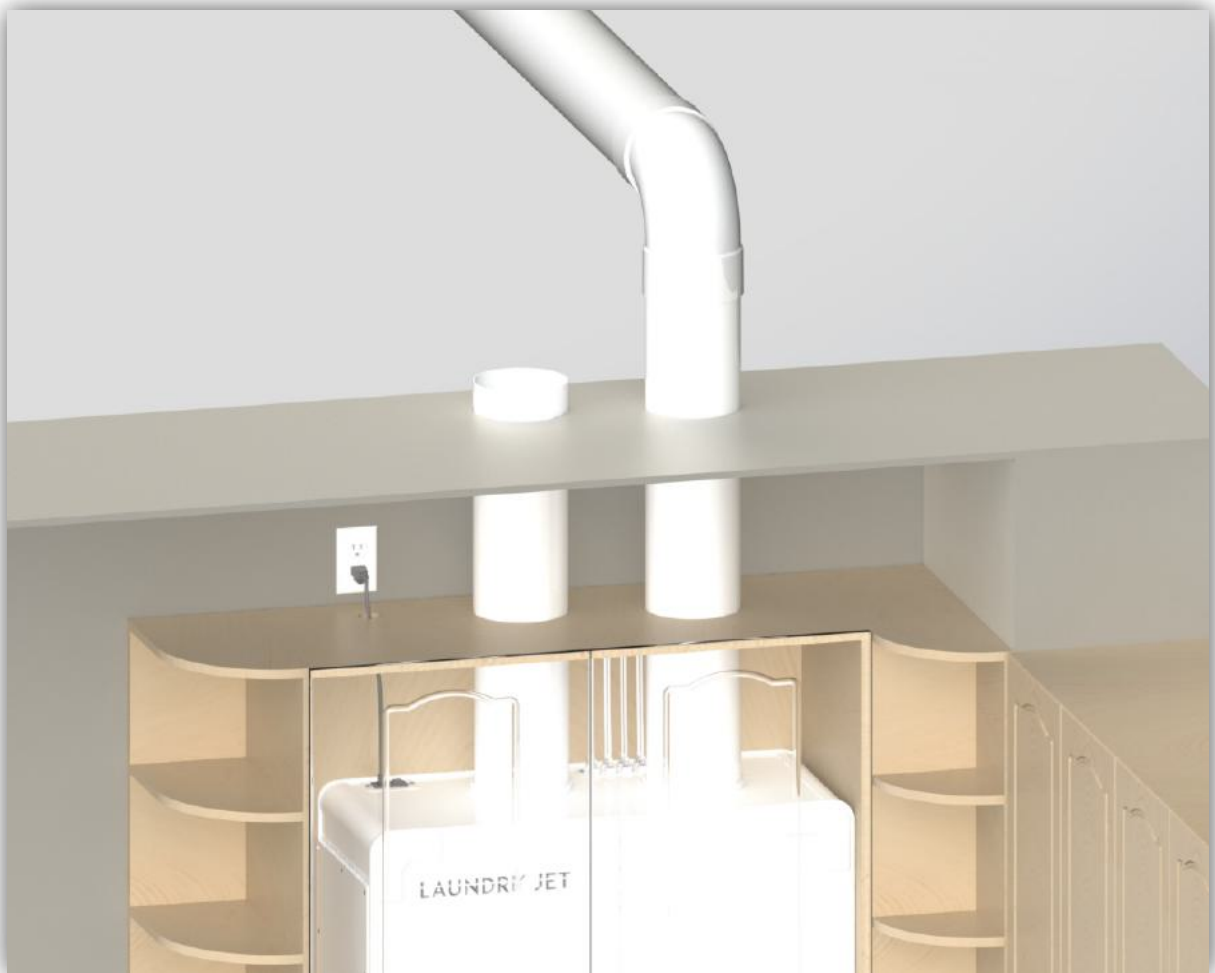
Stud Finder



Level

4.2. Plus Vuelo Pipe Drop

- Install a standard 45 or swept 90 drop in the attic above from a Y connector on the main trunkline to create a vertical drop to the Plus Vuelo Unit
- Strap pipe securely at the attic to ceiling transition.
- Connect the down pipe to the collar on the top right of the Plus Vuelo
- Adjust pipe, (box it in or use clear pipe for aesthetics) and secure it for a true plumbline drop into the Jet Pack collar

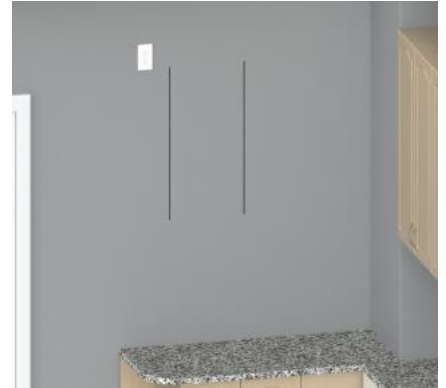


4.3 Cabinet Modification

Cabinet Modification

Step 1

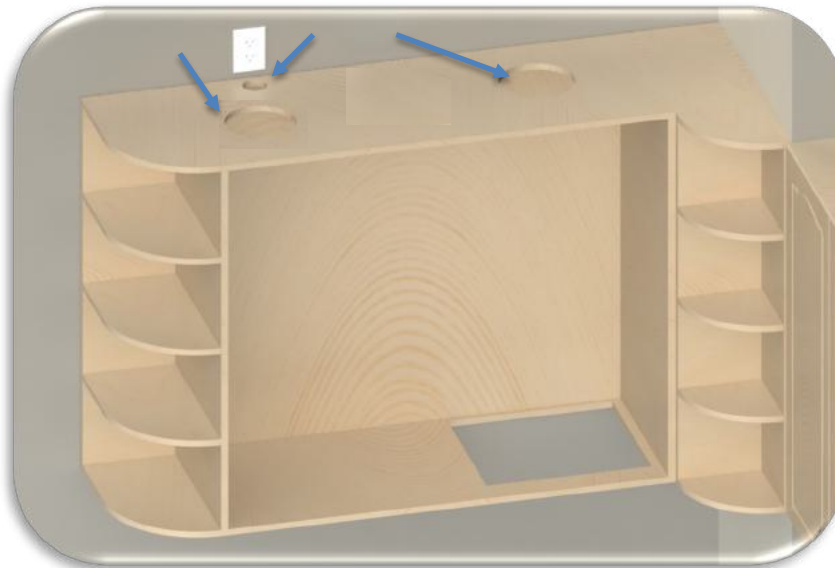
- Using a stud finder, locate mounting stud positions on the wall. Mark Jet Pack installation position on the intended mount wall.
- Draw a vertical line down the center of your mount stud at the elevation of your desired position of the Plus Vuelo.



Step 2

Modify the Custom cabinet to accommodate the Plus Vuelo Unit using the provided Engineering drawings in Section 8 and use appropriate tooling to remove the necessary material from the cabinet. Two 6.25" (159mm) holes are needed to accommodate the Pipe correctly in line with the Plus Vuelo and a small 1" hole for the power cable. Use a correct hole saw or Sawzall

NOTE; If possible, provide the Installation spec to the cabinet maker ahead of build. Please reference Section 8 for Engineering Prints.





Step 3

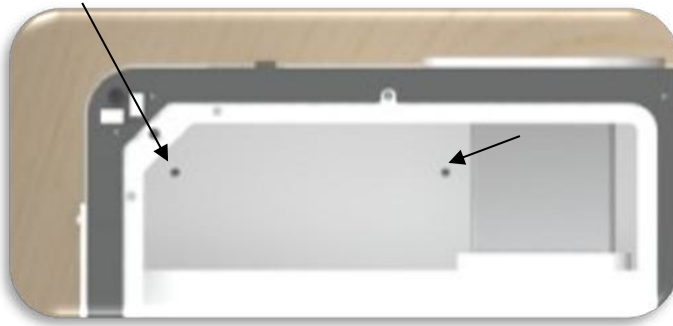
Locate the Plus Cabinet into the custom cabinet with the Plus Cabinet oriented to the right until it sits flush with the right-side face of the custom cabinet.

Step 4

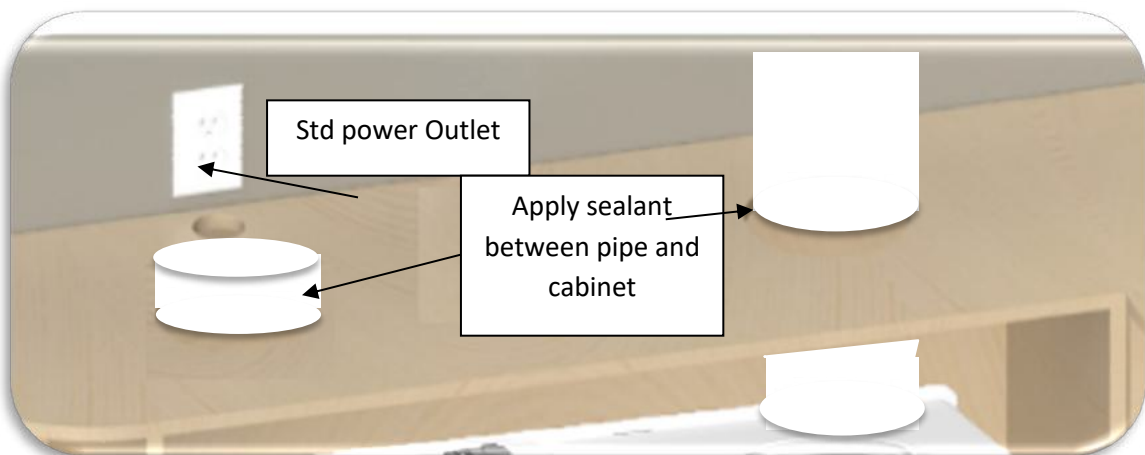
Using a level ensure that the Plus Cabinet is level and to the back and right of the cabinet. In 4 places using provided hardware, set the 4 set screws that fix the right face of the Plus Cabinet to the custom cabinet. (Note, this area is only accessible from the bottom right chute access).

Step 5

Set 2 set screws through the back wall of the Plus Cabinet into the custom cabinet and to the studs or wall behind

**Step 6**

Cut out a section of 6" SDR 35 pipe so that it sits either flush or above the top of the cabinet or extends through the ceiling. Use a window or silicon sealant to seal between the pipe penetration and the custom cabinet.

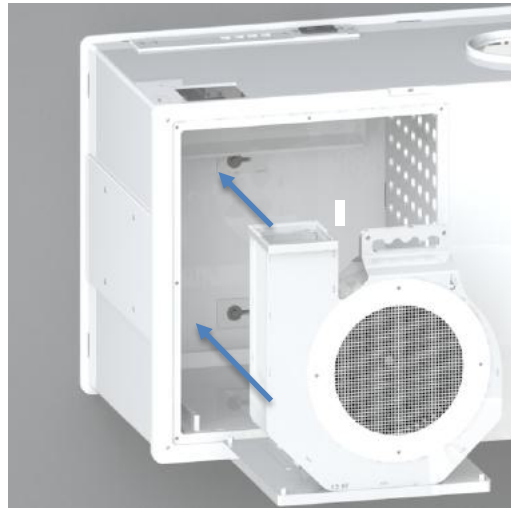


Step 7

Connect the trunk line to the Plus Vuelo Catch Chamber flange on the right of the Plus Vuelo. Bond in place ensuring a tight silicon seal.



4.4 Blower Pod Installation



Blower Pod Installation

The Plus Blower Pod must be installed after installation of the Plus Vuelo unit in the cabinet.

Blower Pod Installation

- Remove the screws and the front panel of the Plus Unit.
- Align and position the blower pod between guide rails and slide into the unit until fully seated. Attach the cable at the top inside of the Laundry Jet Plus to the Pod connector to provide power.

4" Square Connector Installation

- Install the 4" Square Connector thru the square cutout in the unit, and into the square flange of the Blower Pod. Ensure that the connector is fully seated and flush with the top face of the blower pod.
- Screw the bottom plate of the Blower Pod to the Plus base
- Re attach the Plus Front panel with the screws



Attach main front panel. Prior to attaching the panel, make sure the seal material is in good shape and has not been pulled off or torn during the installation process. Attach panel using the provided hardware.



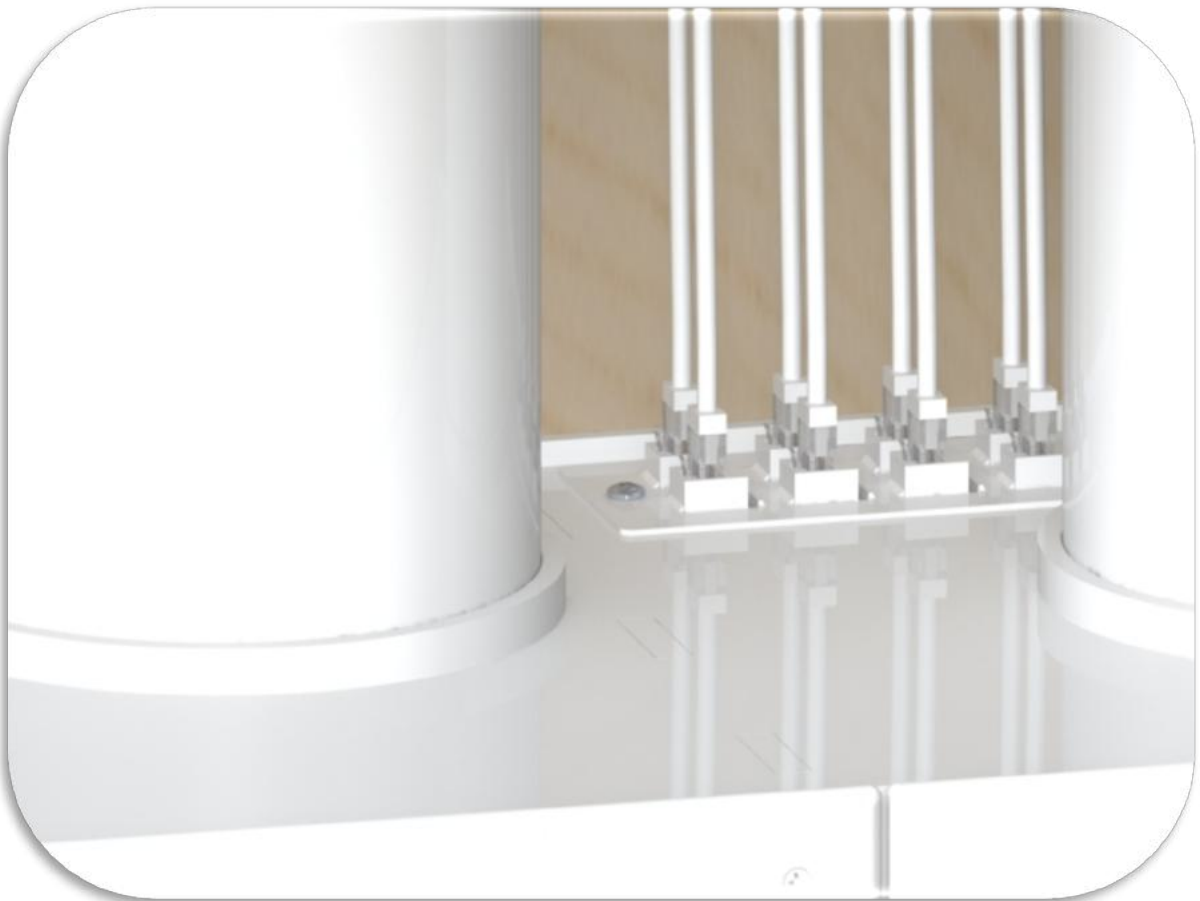
Test the lower discharge door. Make sure that the door moves freely without drag as it cycles open and close.

Open & close cabinet doors to make sure they have adequate clearance to open and close freely. There is no need for a seal here as the Plus Cabinet is a sealed system.



Initial connection, test and setup

- Test all RJ45 connections prior to the next step (T568B)
- Ensure that the Jet Pack is not plugged in
- Connect all the RJ45 cables as shown above to the top of the Plus Unit
- Make sure all ports are fitted and properly connected to the other end of the cables and ready to run
- Plug in your Jet Pack unit to the appropriate power supply. The unit will perform a search set up sequence to find all ports that are connected
- Proceed to test that each port can activate the system. Wait until the system turns off after testing each port before testing the next one



WARRANTY

Lifetime Limited Warranty

Laundry Jet® is protected by a Limited Lifetime Warranty for the original purchaser, valid from the date of purchase, provided the system remains at its original installation location and the warranty registration form is completed at: <https://www.laundryjet.com/warranty>

Warranty Coverage

- Limited Lifetime Warranty on the metal body
- Three (3) Year Limited Warranty on the Jet Pack PosiFlow™ motor
- Three (3) Year Limited Warranty on Laundry Jet ports

This warranty covers defects in materials and workmanship under normal residential use, when installed and operated in accordance with Laundry Jet installation and operating instructions.

Exclusive Warranty

THIS WARRANTY IS THE SOLE AND EXCLUSIVE WARRANTY OF LIFEFLOW, LLC – LAUNDRY JET. ALL IMPLIED WARRANTIES, INCLUDING MERCHANTABILITY OR FITNESS FOR A PARTICULAR PURPOSE, ARE LIMITED IN DURATION TO THE APPLICABLE WARRANTY PERIOD STATED ABOVE.

Warranty Claims & Service

1. In the event of a suspected defect:
2. Contact the selling authorized Laundry Jet Dealer or Laundry Jet Technical Support.
3. The customer may be required to return the allegedly defective component to Laundry Jet or an authorized service facility for inspection.
4. Customer is responsible for shipping the product to Laundry Jet for evaluation.
5. If the product is confirmed defective, Laundry Jet will, at its sole option, repair, replace, or credit the defective part and cover the cost of return shipping.
6. If no defect is found, inspection, handling, and return shipping costs may apply.
7. Warranty service must be performed by an authorized Laundry Jet Dealer using genuine Laundry Jet replacement parts.

Parts-Only Coverage

This warranty covers parts only. Labor, removal, reinstallation, cabinetry, drywall, electrical work, and any associated service or repair costs are not covered.

Exclusions

This warranty does not cover pipe or fittings, normal wear and tear, commercial or institutional use, drywall dust, misuse, abuse, neglect, accidents, acts of God, improper installation, modification, alteration, improper operation, or failure to maintain the system.

Limitation of Liability

LIFEFLOW, LLC – LAUNDRY JET SHALL NOT BE LIABLE FOR ANY INCIDENTAL, CONSEQUENTIAL, OR SPECIAL DAMAGES ARISING FROM THE USE OR INABILITY TO USE THIS SYSTEM, EXCEPT WHERE PROHIBITED BY LAW.

Some states or provinces do not allow limitations on implied warranties or damages; therefore, these limitations may not apply to you.

Legal Rights & Geographic Scope

This warranty gives you specific legal rights, and you may have additional rights which vary by state or province.

This Limited Warranty applies to installations in the United States and Canada only. For coverage outside these regions, consult your authorized Laundry Jet Dealer.

Other Components

Other components and optional accessories may be covered by separate warranties. Refer to the documentation supplied with those items.

