



INSTALLATION GUIDE

Laundry Jet Plus

March 2023

Version 6.0 Revision 0.0

Rev 10 Units

*Laundry Jet
2001 Challenger Avenue
Oroville, CA 95965*





Document Revisions

Date	Version Number	Document Changes
4/12/2017	1.0 Rev 0.1	Plus Jet Pack Installation Guide - Rev 3 Units
7/21/2017	1.0 Rev 0.2	Plus Jet Pack Installation Guide - Rev 3 Units
5/4/2020	2.1 Rev 1.0	Plus Jet Pack Installation Guide - Rev 4 Units
6/17/2021	2.1 Rev 2.0	Plus Jet Pack Installation Guide - Rev 6 Units
12/21/2021	3.0 Rev 0.1	Plus Jet Pack Installation Guide - Rev 7 Units
4/12/2022	4.0 Rev 0.1	Plus Jet Pack Installation Guide - Rev 8 Units
12/1/2022	5.0 Rev 0.1	Plus Jet Pack Installation Guide - Rev 10 Units
3/14/2023	6.0 Rev 0.0	Laundry Jet Installation Guide - Removed Ports from Guide



FOR ADDITIONAL HELP INCLUDING
INSTRUCTIONAL VIDEOS



Table of Contents

1	Introduction	5
2	Contents	6
3	Pipe Installation Overview	7-11
	3 - Components & Tools	7
	3.1 - Pipe Installation Standards	8
	3.2 - Port Drop Installation	9
	3.3 - Port 90 Installation	10
	3.4 - Plus Jet Pack Pipe Drop	11
4	Plus Jet Pack Installation	12-24
	4 - Components & Tools	12
	4.1 - Jet Pack Installation	13-24
5	Warranty	25
6	Engineering Prints	26-29

1 Introduction

The Laundry Jet installation is comprised of three elements:

- Laundry Jet Ports mounted in bedrooms, dressing rooms or bathrooms
- The laundry room Wall mounted or Cabinet Mount Vacuum Unit
- The PVC pipe and fittings that connect the ports to the laundry room through the attic space

Vacuum Laundry Pipe

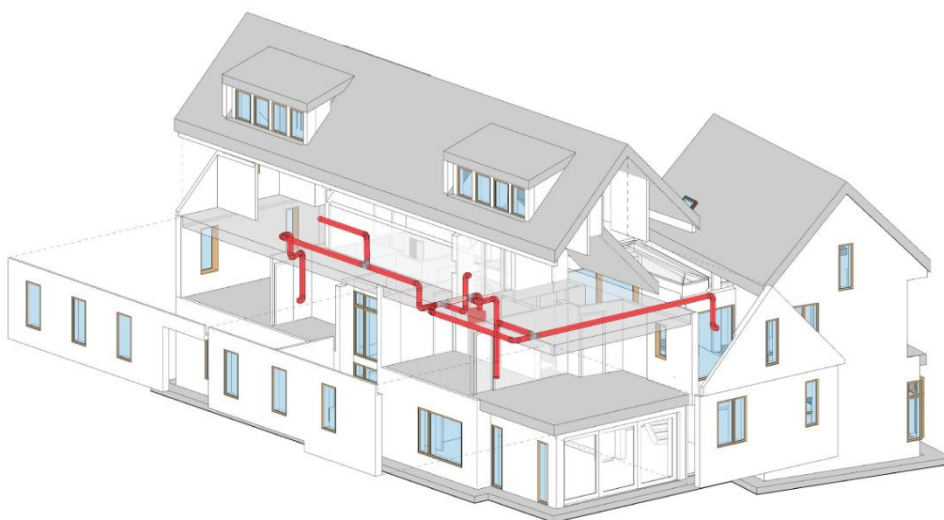
Laundry Jet specifies 6" SDR35 White Solvent Weld PVC pipe and fittings. This piping is light weight to make install quick and easy.

PVC piping is designed to have a smooth transition in between fittings and connections which ensures that clothing, bedding and towels will travel smoothly to the laundry room.

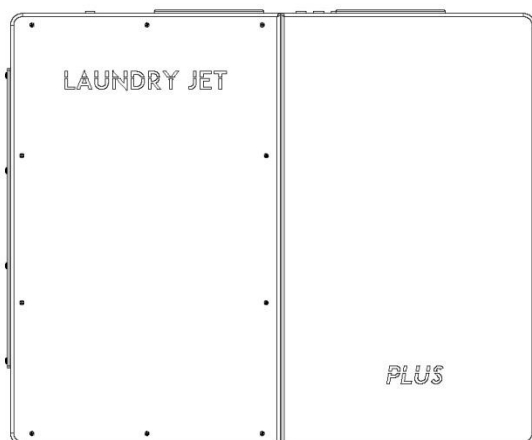
Pipe & Fittings

6" SDR35 White Solvent Weld PVC pipe 10' x 6"

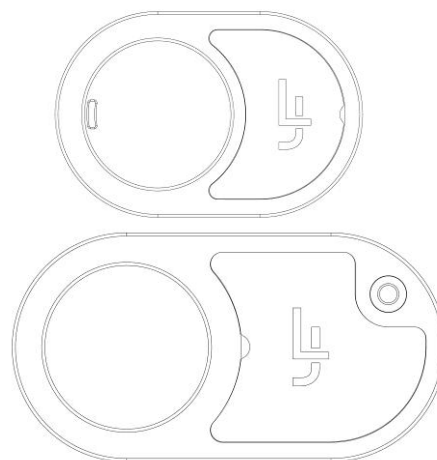
All Fittings are 6" SDR35 White Solvent Weld



2 Contents



Laundry Jet Plus Jet Pack

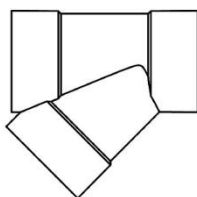


Slide Port / ISense Port

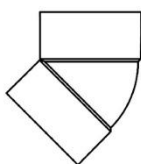
**** See Port Installation Guide ****

Pipe Components

All Fittings are 6" SDR35 White Solvent Weld



6 Inch Wye



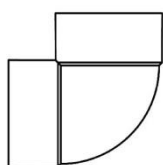
6 Inch 45° Elbow



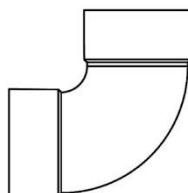
6 Inch Coupler



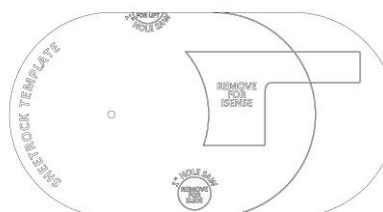
6 Inch Cleanout



6 Inch 90°



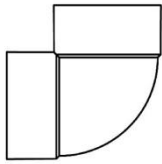
6 Inch Swept 90°



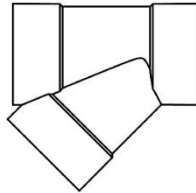
ISense Sheetrock Template

3 Pipe Installation Overview

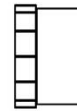
Components



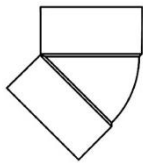
Port 90 Assembly



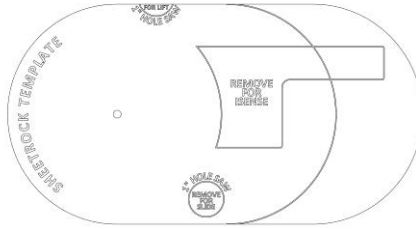
6 Inch Wye



6 Inch Cleanout Adapter



6 Inch 45° Elbow



Sheetrock Template

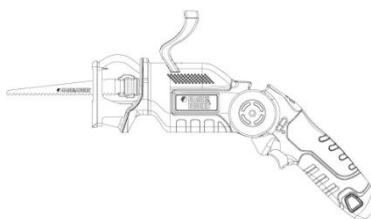


Cat5 Cable Bundle

Tools



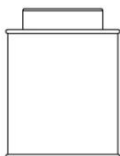
Cordless Drill



Sawzall



Tape Measure



Clear 2 Part PVC Glue



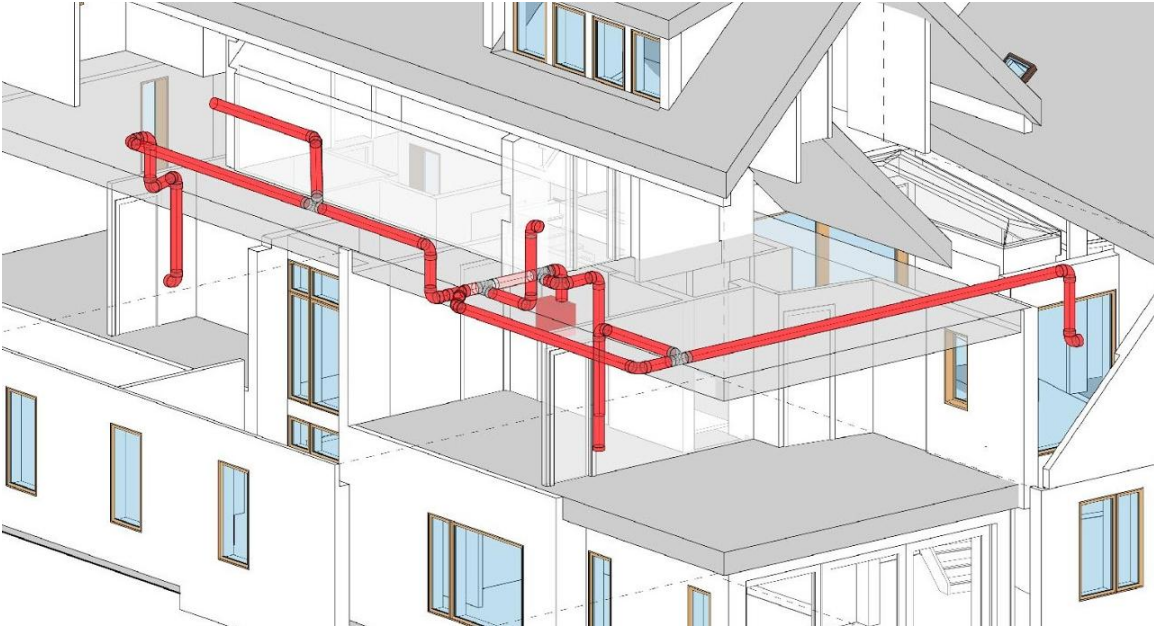
1" Wood Screw



Plumber's Metal Strapping Tape

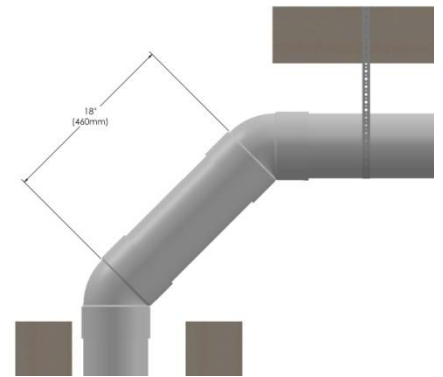
3.1 Pipe Installation Overview

Pipe Installation Standards

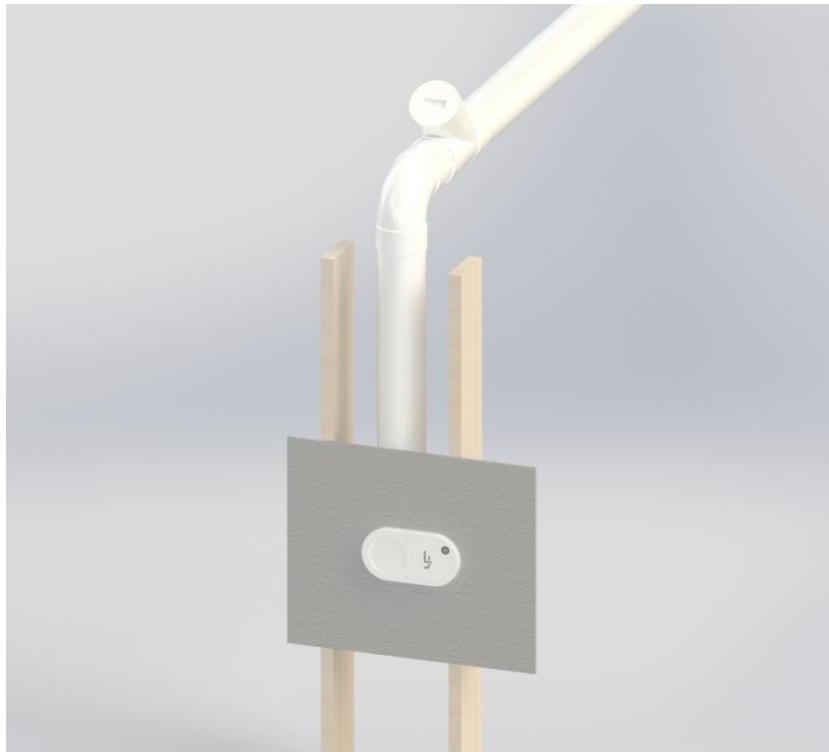


Required Piping Installation Standards

- All joints must use a minimum entry angle of 45 degrees with a break distance of 18 Inches (460 MM). See Image below.
- Pipe cuts must be straight and de burred before seating.
- Pipe must be completely seated in fitting connections.
- Seal all joints using standard PVC glue. Connections must be glued around 360 degrees to ensure maximum system performance.
- System must be strapped with “plumbers tape” (or equivalent) every 6 feet. Port 90 must be strapped and secured prior to Port installation.
- Install Cleanout ports every 50 feet on angled runs. Straight trunk lines can run up to 100 feet with cleanouts at either end.



3.2 Pipe Installation Overview

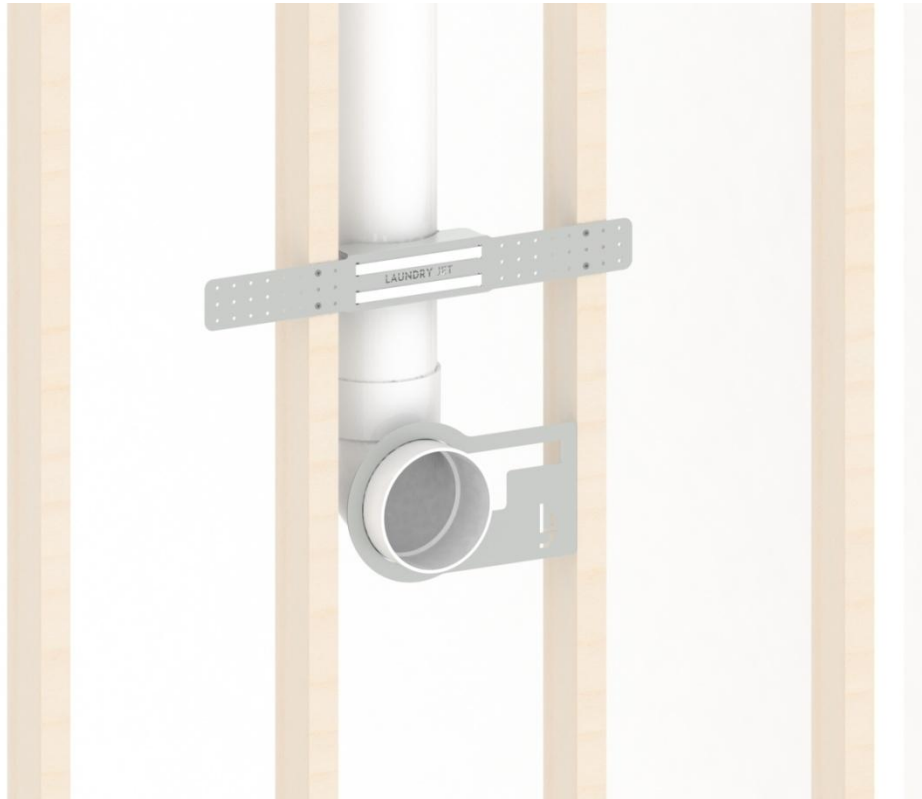


Port Drop Installation

- Mount port 90 using the Port 90 Mount Bracket. Use a standard SDR 6" Swept 90 for your Port Drop Installation. Block and strap drop line at midway point. **** See Port Installation Guide for Instructions ****

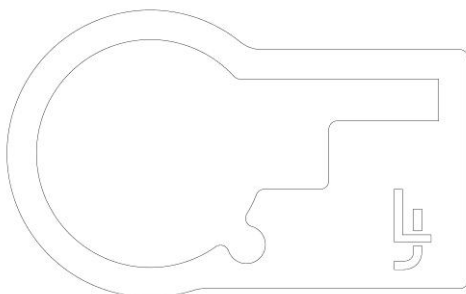


3.3 Pipe Installation Overview



Port 90 Installation

- Port 90 must be installed with front face of Port 90 flush with the finished face of interior wall. **** See Port Installation Guide for Instructions ****
- Port 90 must be installed on a plum horizontal port drop line.
- Use the Port 90 Mount Bracket to align and secure the Port 90 to the frame (unless a remodel)



3.4 Pipe Installation Overview

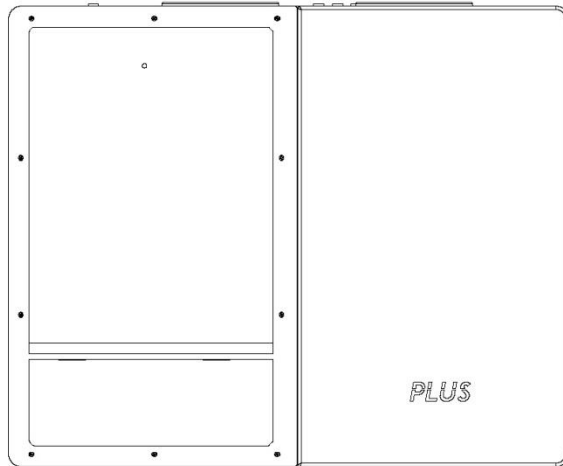


Plus Jet Pack Pipe Drop

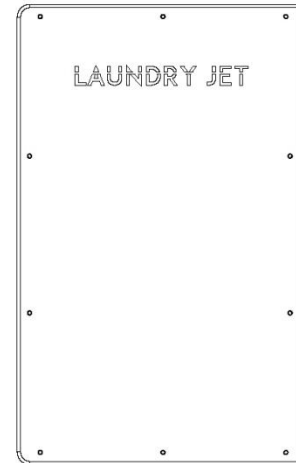
- Install a standard swept 90 drop to each port using a swept 90 elbow.
- Strap pipe at attic to ceiling transition.

4 Jet Pack Installation

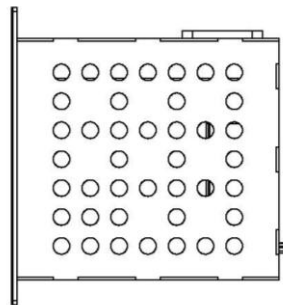
Components



Plus Jet Pack Housing



Plus Jet Pack Front Panel

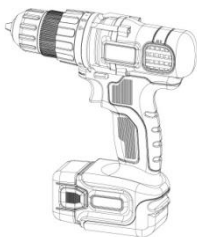


Plus Jet Pack Blower Pod



4" Square Connector

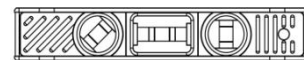
Tools



Cordless Drill



Stud Finder



Level

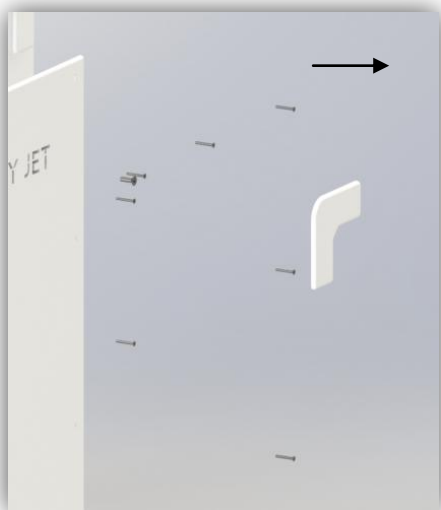
4.1 Jet Pack Installation



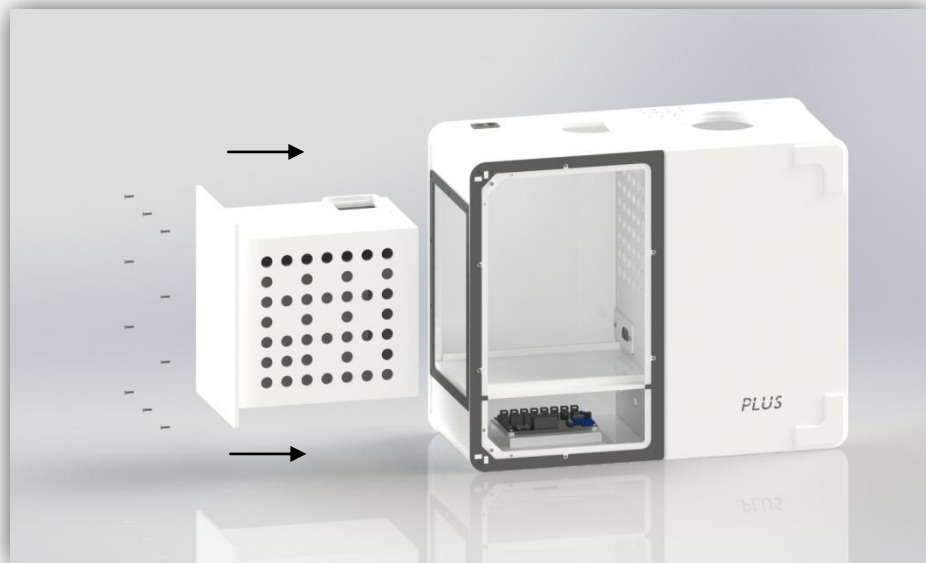
Blower Pod Installation

The Plus Blower Pod must be installed prior to installation of the unit in the cabinet.

- Remove the ten 10-32 screws from the left side of the unit and remove temporary cardboard/wooden stabilizing plate.
- Using a flathead screw driver, carefully remove the two left side magnetic cover plates. Remove the two 1/4-20 screws and the twelve 6-32 screws. Remove the front panel of the Plus Unit.

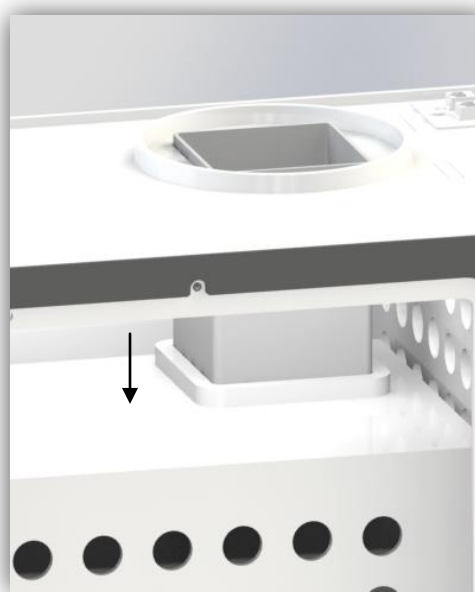
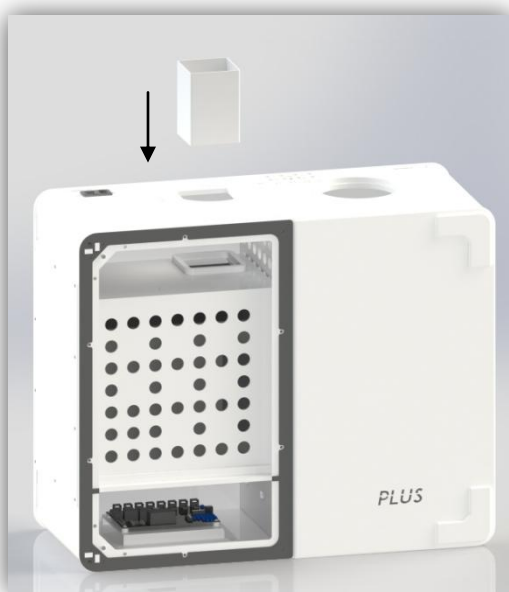


4.1 Jet Pack Installation

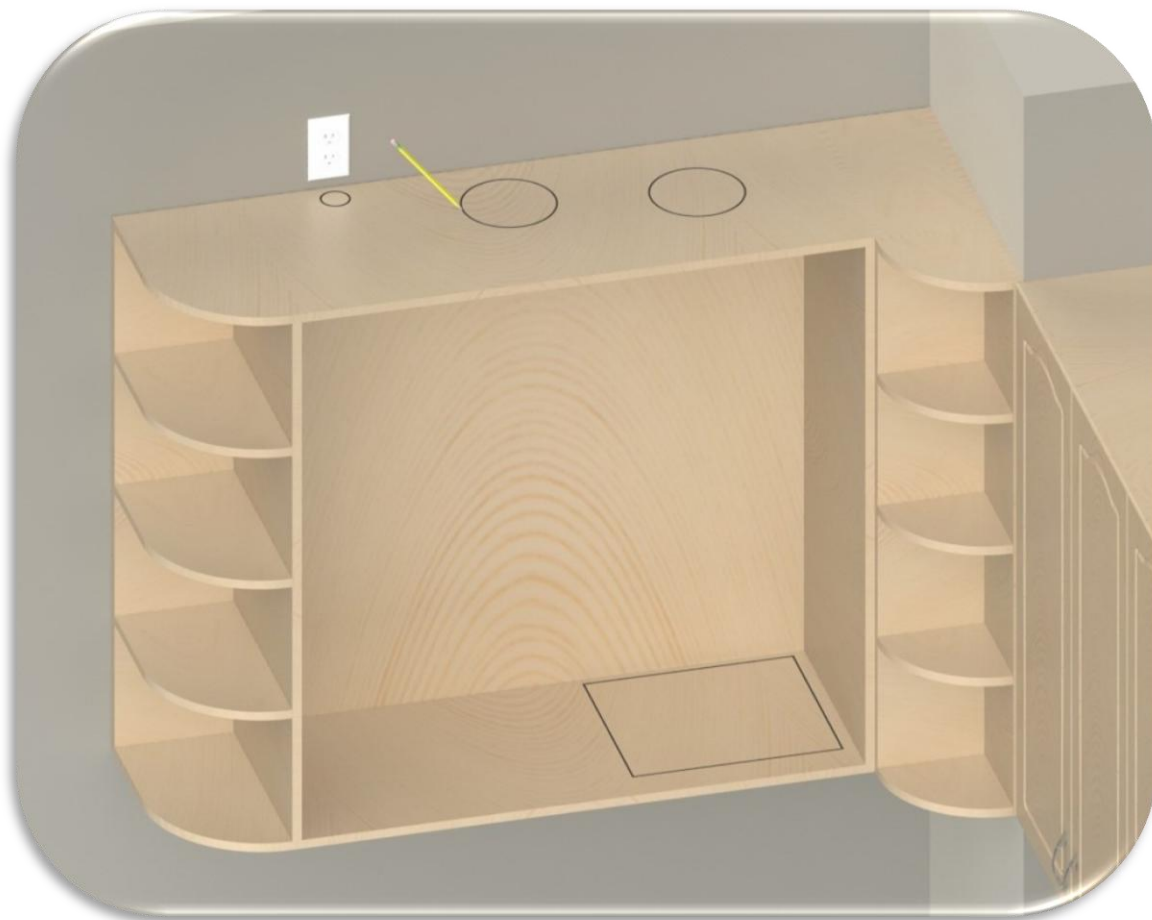


Blower Pod Installation

- Align and position the blower pod between guide rails and slide into the unit until fully seated. Reinstall the ten 10-32 screws.
- Install the 4" Square Connector thru the square cutout in the unit, and into the square flange of the Blower Pod. Ensure that the connector is fully seated and flush with the top face of the blower pod.



4.1 Jet Pack Installation



Step 1

- Modify the Custom cabinet to accommodate the Plus Cabinet. Using the provided drawings in Section 6, use appropriate tooling to remove the necessary material from the cabinet.

4.1 Jet Pack Installation



Step 2

- If possible, provide the Installation spec to the cabinet maker ahead of build. Please reference Section 6 for Engineering Prints.

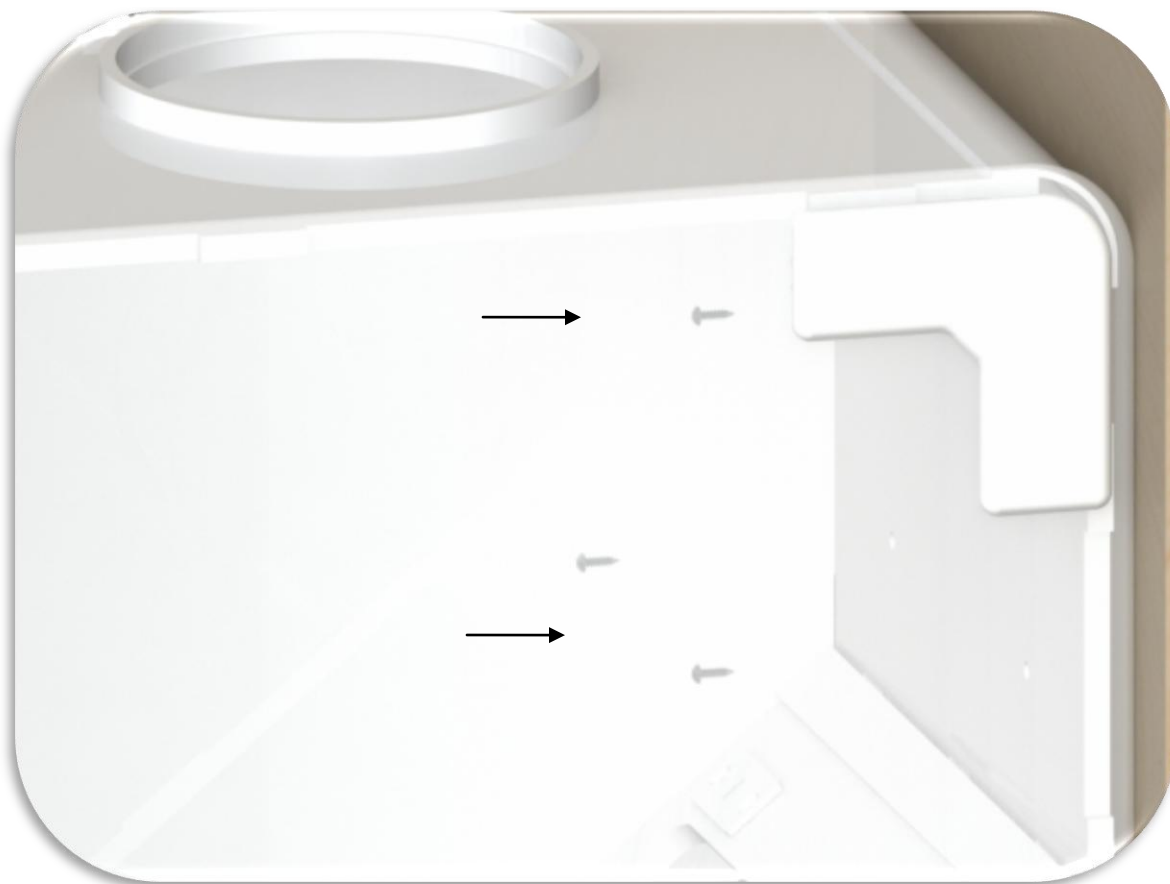
4.1 Jet Pack Installation



Step 3

- Locate the Plus Cabinet into the custom cabinet with the Plus Cabinet oriented to the right until it sits flush with the right side face of the custom cabinet.

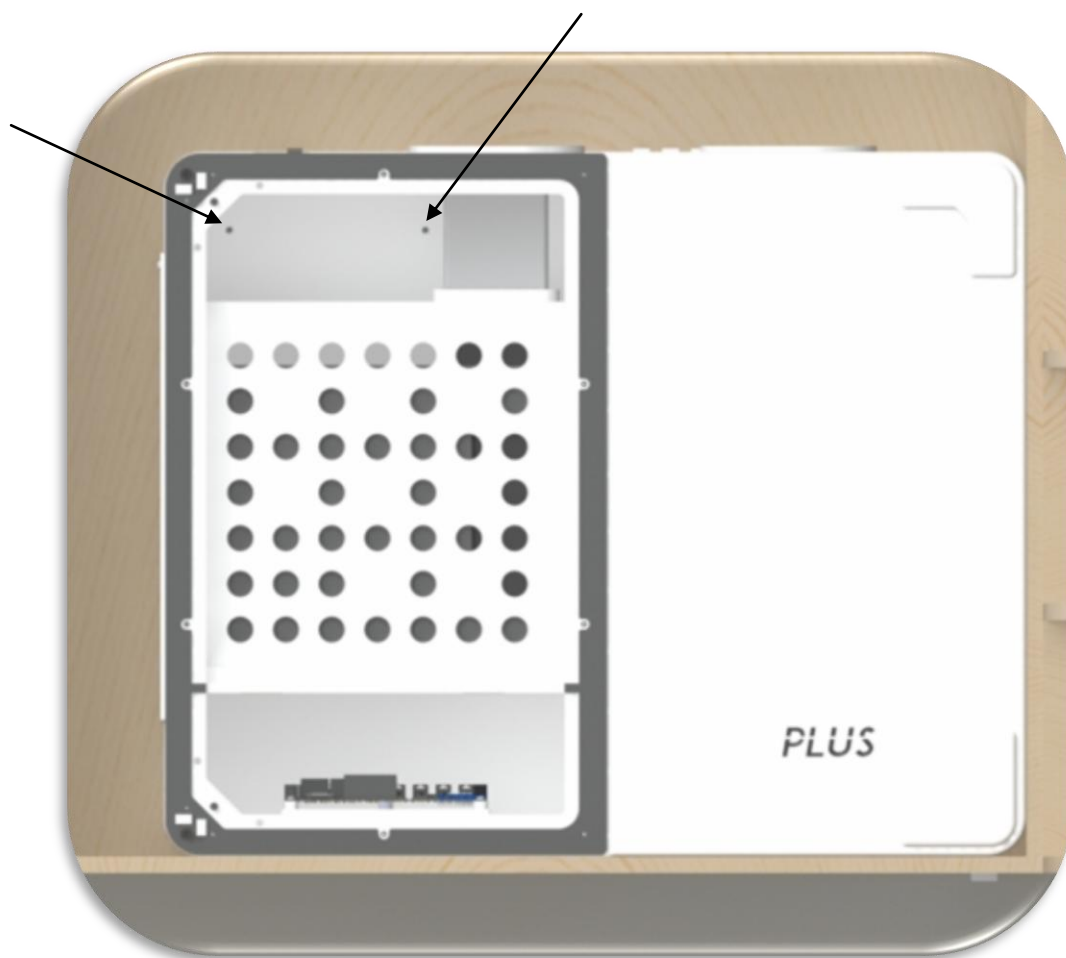
4.1 Jet Pack Installation



Step 4

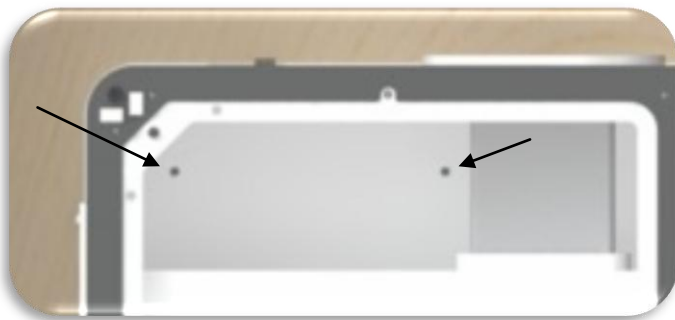
- Using a level ensure that the Plus Cabinet is level and to the back and right of the cabinet. In 4 places using provided hardware, set the 4 set screws that fix the right face of the Plus Cabinet to the custom cabinet. (Note, this area is only accessible from the bottom right chute access)

4.1 Jet Pack Installation

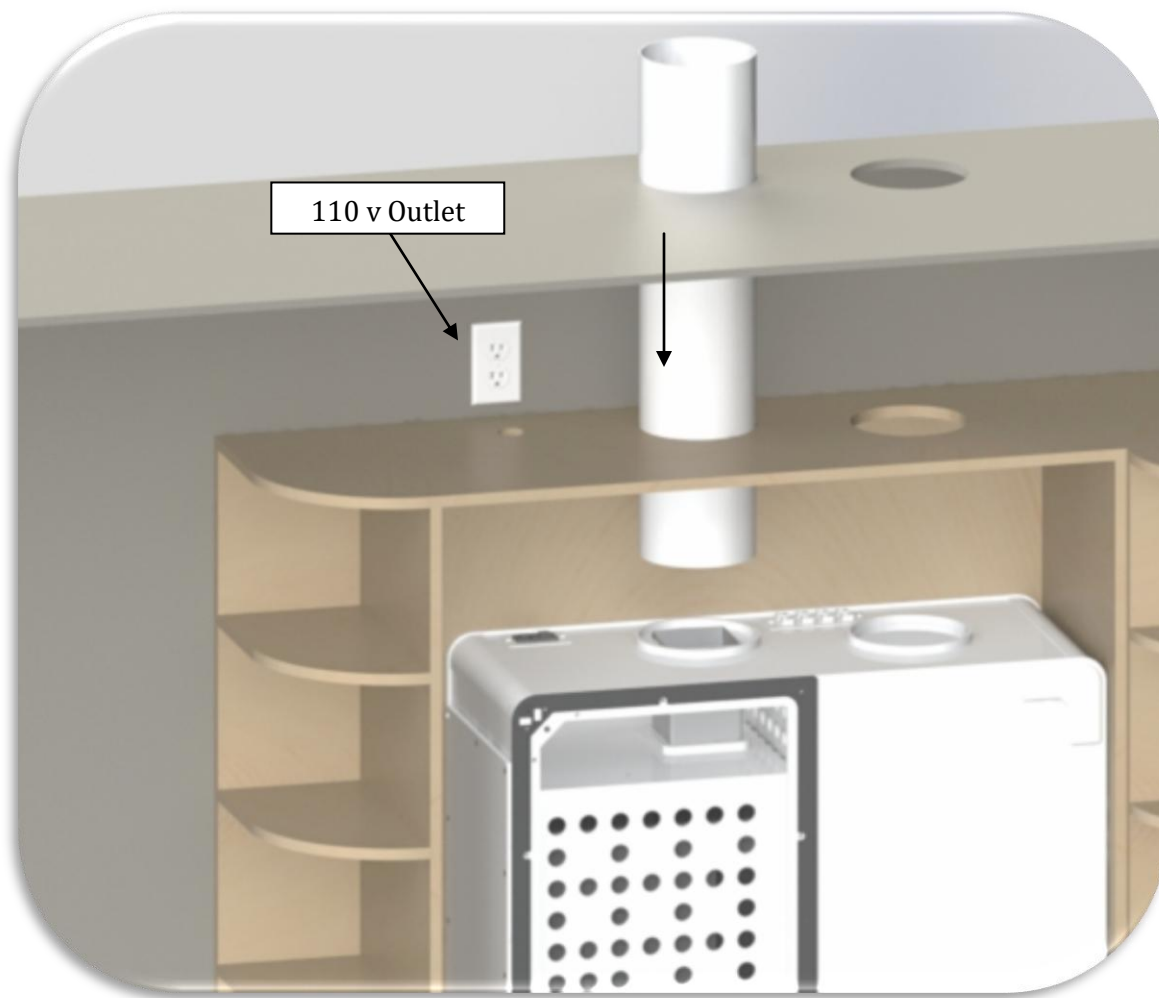


Step 5

- Set 2 set screws through the back wall of the Plus Cabinet into the custom cabinet.



4.1 Jet Pack Installation



Step 6

- Cut out a section of 6" SDR 35 pipe so that it sits either flush or above the top of the cabinet or extends through the ceiling. Use a window sealer to seal between the pipe penetration and the custom cabinet.

4.1 Jet Pack Installation



Step 7

- Connect the trunk line to the Vac Chamber flange. Bond in place ensuring a tight supply seal.

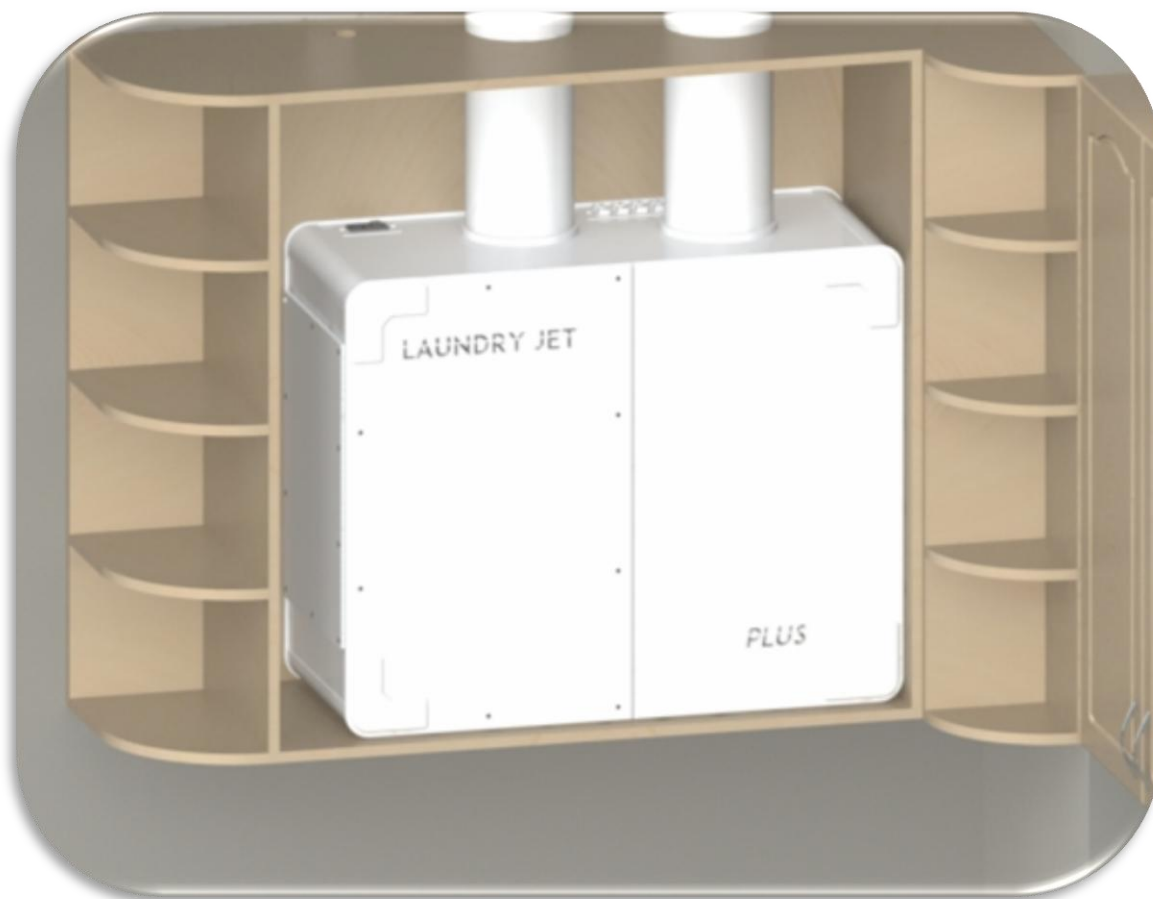
4.1 Jet Pack Installation



Step 8

- Attach main front panel. Prior to attaching the panel, make sure the seal material is in good shape and has not been pulled off or torn during the installation process. Attach panel using the provided hardware. Reinstall the two magnetic cover plates.

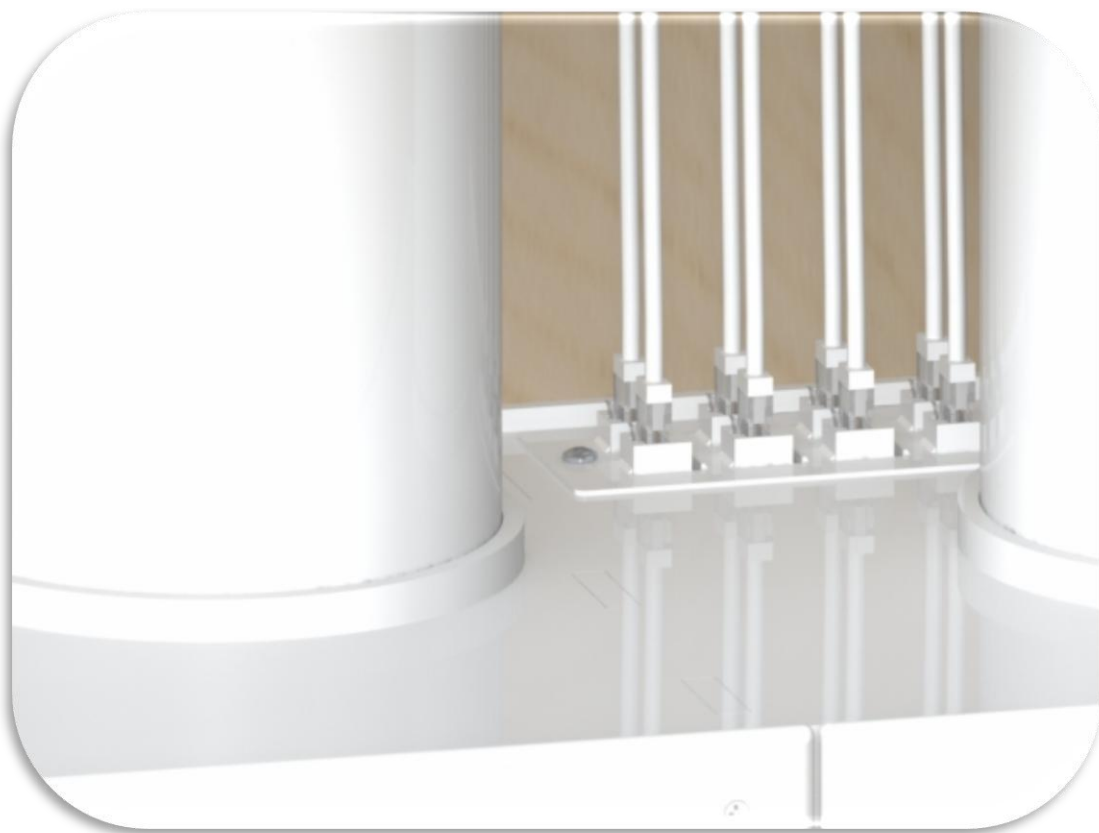
4.1 Jet Pack Installation



Step 9

- Test the discharge port door. Make sure that the door moves freely without drag as it cycles open and close.
- Open & close cabinet doors to make sure they have adequate clearance to open and close freely. There is no need for a seal here as the Plus Cabinet is a sealed system.

4.1 Jet Pack Installation



Step 10

- Test all RJ45 connections prior to the next step (T568B)
- Ensure that the Jet Pack is not plugged in.
- Connect all the RJ45 cables as shown above.
- Make sure all ports are fitted and properly connected and ready to run
- Plug in your Jet Pack unit to the appropriate power supply
- Proceed to verify proper operation of ports

5 Warranty

Lifetime Limited Warranty

Laundry Jet is protected by a 3 year limited lifetime warranty. This warranty is valid from the date of purchase, for as long as you are the original owner, the system remains at its original place of installation and as long as the warranty form has been completed and submitted on our website: <http://www.laundryjet.com/warranty>

- Plastic body of the Laundry Jet Units.
- Laundry Jet Posiflo Power unit
- Ports
- Digital Control Board

THIS IS THE SOLE AND EXCLUSIVE WARRANTY OF LIFE FLOW LLC – LAUNDRY JET. IMPLIED WARRANTIES, INCLUDING IMPLIED WARRANTIES OF MERCHANTABILITY OR FITNESS FOR A PARTICULAR PURPOSE ARE LIMITED IN DURATION OF LIMITED WARRANTY PERIOD.

Should any defect in material or workmanship appear within the time of the above warranty, the selling Laundry Jet Dealer should be contacted in the first instance. The Dealer shall repair or replace (at Laundry Jet's sole option), or credit, such part or parts in accordance with the applicable warranty period stated above. Lifeflow, LLC – Laundry Jet shall not be responsible for such service unless provided by an authorized Laundry Jet Dealer utilizing authentic Laundry Jet replacement parts.

This warranty does not apply to loss or damage resulting from (at Laundry Jet's sole discretion) normal wear and tear, vacuum of drywall dust, neglect, abuse acts of God, accidents, improper installation, improper modification or alteration, improper use and operation or failure to provide proper maintenance.

Some countries, states or provinces do not allow exclusion of warranties or limitations of damages, so the above limitations and exclusions may not apply to you. This warranty gives you specific legal rights. You may have additional rights, which vary from State to State, or Province to Province. This limited warranty applies to USA and Canada installations only. For specific warranty information for your Country, consult your authorized Laundry Jet Dealer.

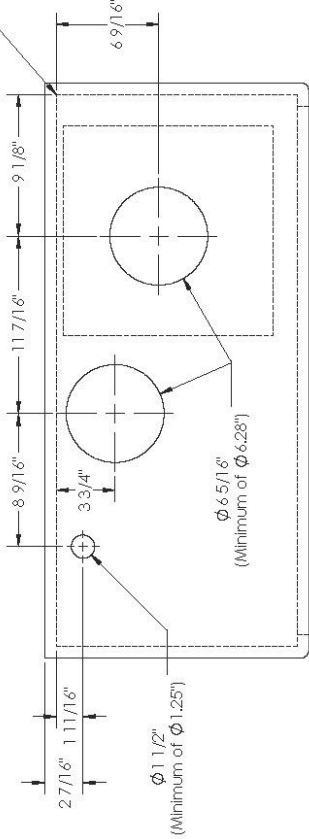
Other warranties apply to other parts of this equipment and optional accessories. Please contact the material accompanying the individual items.

LIFEFLOW, LLC – LAUNDRY JET, SHALL NOT BE RESPONSIBLE FOR ANY CONSEQUENTIAL, INCIDENTAL, OR SPECIAL DAMAGES ARISING FROM THE USE OF THIS SYSTEM.

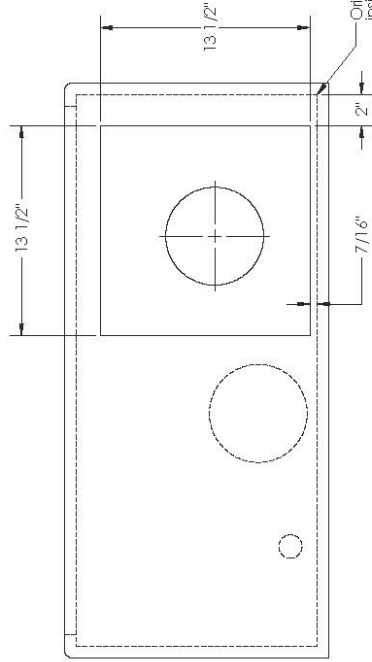
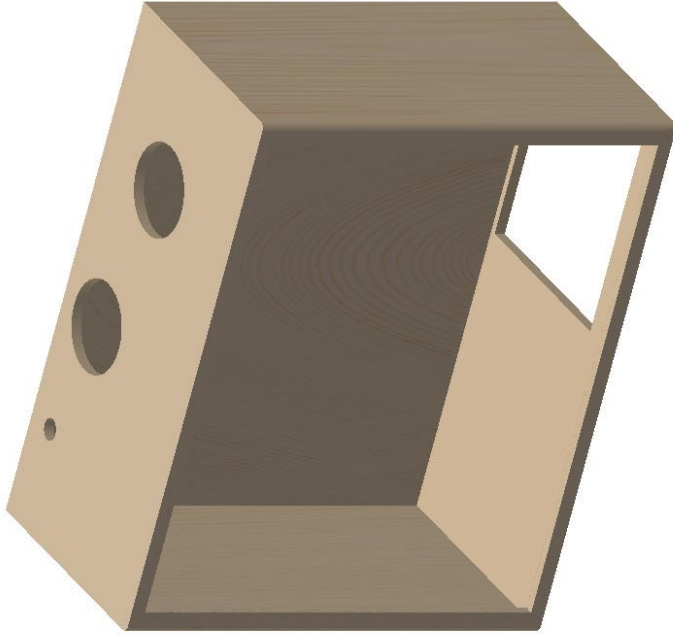
Extended warranties are available at the time of purchase.



Orientation of all cutouts originate from inside right wall of cabinet. Insert Jet Pack is mounted flush with the right wall and back wall of cabinet.



Cabinet Cutout Detail



Orientation of all cutouts originate from inside right wall of cabinet. Insert Jet Pack is mounted flush with the right wall and back wall of cabinet.

UNLESS OTHERWISE SPECIFIED:
DIMENSIONS ARE IN INCHES
TOLERANCES:
FRACTIONS DECIMALS
ANGULAR MACH ±
TWO PLACE DECIMAL ±
THREE PLACE DECIMAL ±

DRAWN OW 12.7.22
CHECKED DH 12.7.22
ENG APPR. DH 12.7.22
MFG APPR.
Q.A.
CUSTOMER:

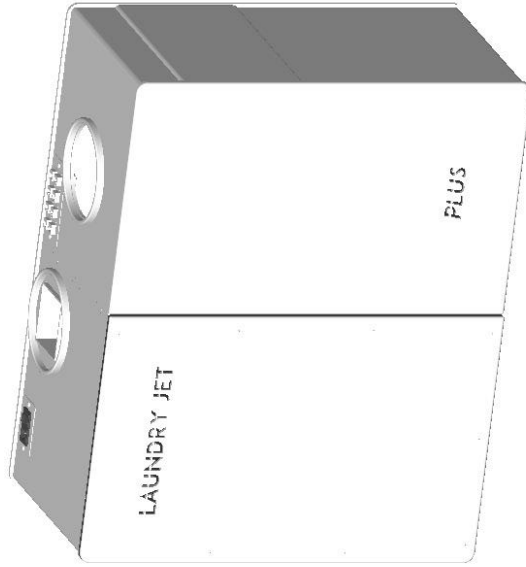
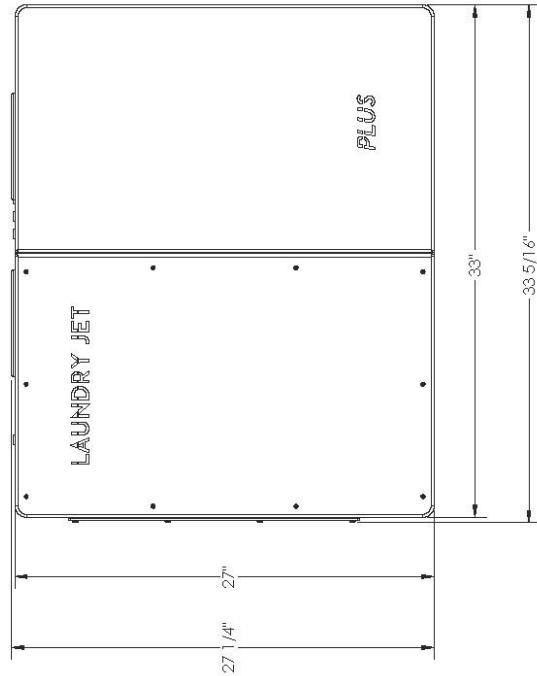
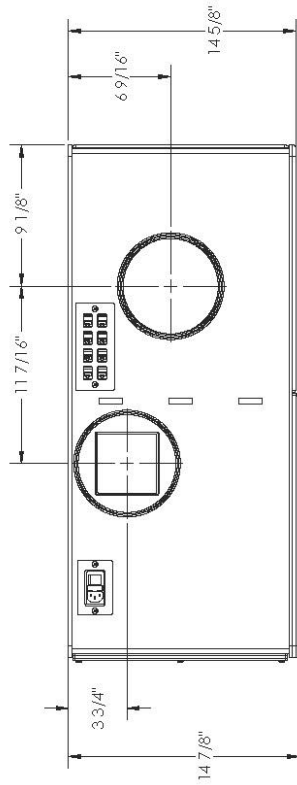
NAME DATE
OW 12.7.22
DH 12.7.22
DH 12.7.22
MFG APPR.
Q.A.
CUSTOMER:

LAUNDRY JET
Plus Insert Jet Pack
Engineering Prints

TITLE: Plus Insert Jet Pack
Engineering Prints
SIZE DWG. NO. PUP-SHEET REV
A 10
SCALE: 1:6 WEIGHT: SHEET OF 4

PROPRIETARY AND CONFIDENTIAL
THE INFORMATION CONTAINED IN THIS DRAWING IS THE PROPERTY OF LAUNDRY JET. ANY REPRODUCTION IN PART OR AS A WHOLE WITHOUT THE WRITTEN PERMISSION OF LAUNDRY JET IS PROHIBITED.

DO NOT SCALE DRAWING



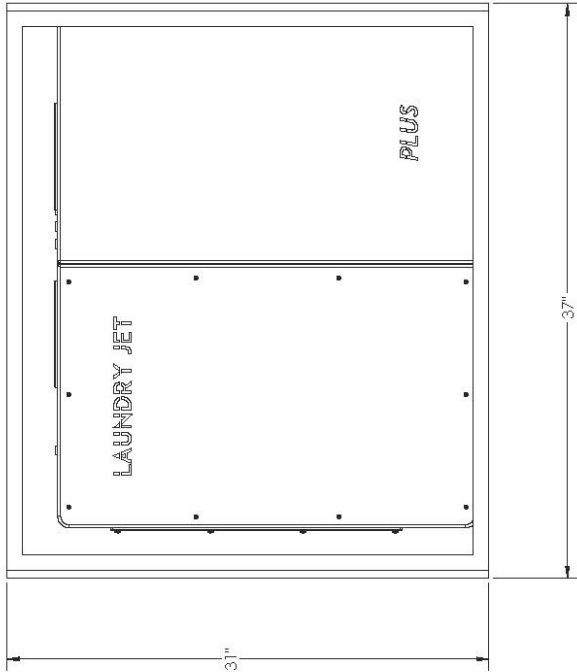
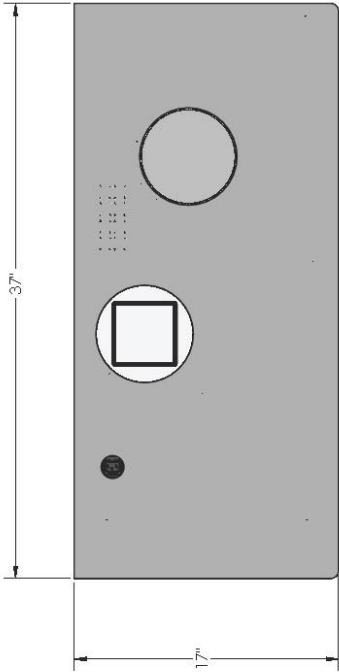
UNLESS OTHERWISE SPECIFIED:				NAME	DATE
DIMENSIONS ARE IN INCHES				DRAWN	12.7.22
TOLERANCES:				CHECKED	12.7.22
FRACTIONAL ±				ENG. APPR.	12.7.22
ANGULAR: MACH ±				MFG APPR.	
HOLE POSITION ±				Q.A.	
THREE PLACE DECIMAL ±				CUSTOMER:	
FINISH				DO NOT SCALE DRAWING	

LAUNDRY JET

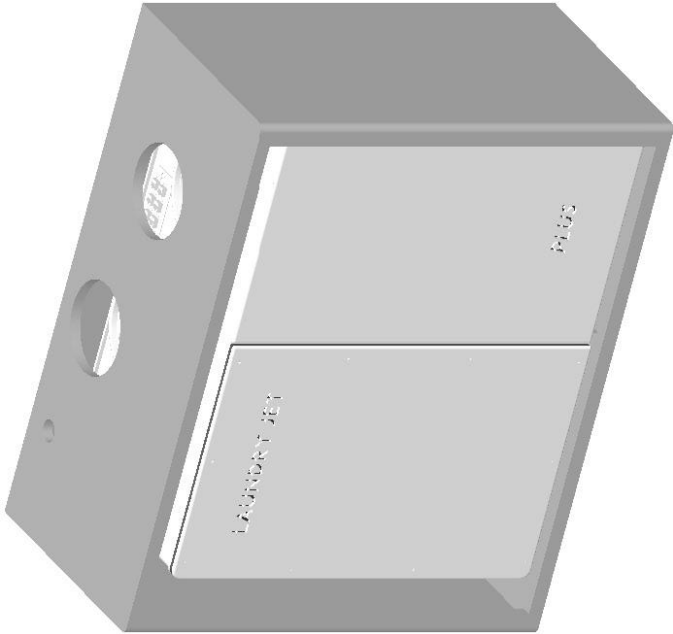
Plus Insert Jet Pack
Engineering Prints

SIZE	DWG. NO.	REV
A	PJP-SHEET2	10
SCALE: 1/6	WEIGHT:	SHEET 2 OF 4

PROPRIETARY AND CONFIDENTIAL
THE INFORMATION CONTAINED IN THIS
DRAWING IS THE SOLE PROPERTY OF
LAUNDRY JET. ANY REPRODUCTION IN
PART OR AS A WHOLE WITHOUT THE WRITTEN
PERMISSION OF **LAUNDRY JET** IS PROHIBITED.



Plus Insert Cabinet Detail



UNLESS OTHERWISE SPECIFIED:				NAME	DATE
DIMENSIONS ARE IN INCHES				OW	12.7.22
TOLERANCES:				DH	12.7.22
FRACTIONAL: BEND ±				ENG APPR.	12.7.22
ANGULAR: MACH ±				MFG APPR.	
DECIMAL: FIVE ±				Q.A.	
THREE PLACE DECIMAL ±				CUSTOMER:	
DO NOT SCALE DRAWING				SIZE	DWG. NO.
				A	PJP-SHEET3
				SCALE: 1:6	WEIGHT:
					1

PROPRIETARY AND CONFIDENTIAL			
THE INFORMATION CONTAINED IN THIS DRAWING IS THE SOLE PROPERTY OF LAUNDRY JET. ANY REPRODUCTION IN PART OR AS A WHOLE WITHOUT THE WRITTEN PERMISSION OF LAUNDRY JET IS PROHIBITED.			

LAUNDRY JET			
Engineering Prints			
TITLE: Plus Insert Jet Pack			
REV			
10			
SHEET 3 OF 4			

A diagram of a rectangular piece of paper. The vertical dimension on the left is labeled $37''$. The horizontal dimension at the bottom is labeled $17''$. Inside the rectangle, there is a small circle containing a square, a larger circle, and a small circle with the number 15 inside it.

LAUNDRY JET

PLUS

31"

31"

PROPRIETARY AND CONFIDENTIAL
THE INFORMATION CONTAINED IN THIS
DRAWING IS THE SOLE PROPERTY OF
LAUNDRY JET. ANY REPRODUCTION IN
PART OR AS A WHOLE WITHOUT THE WRITTEN
PERMISSION OF **LAUNDRY JET** IS PROHIBITED.