

INSTALLATION GUIDE

Laundry Jet Plus Jet Pack

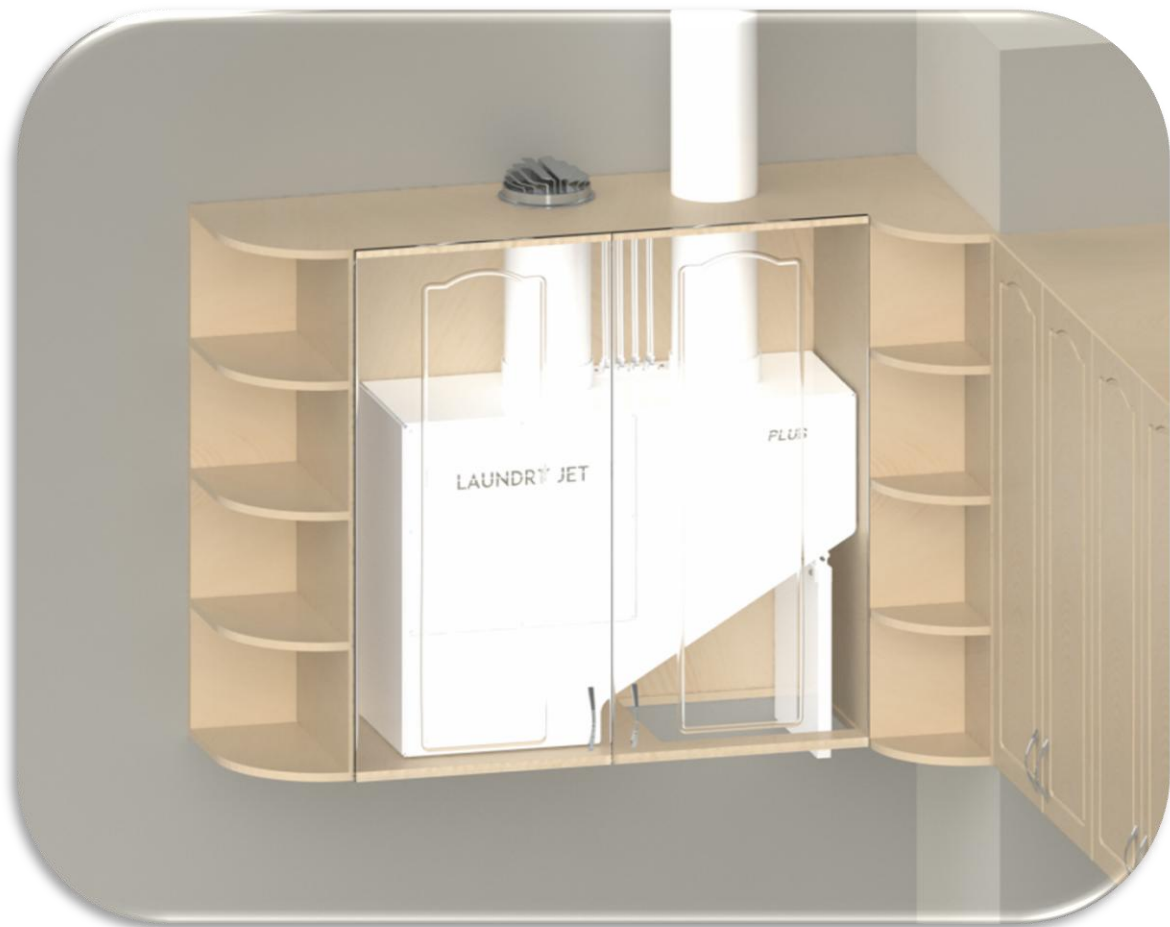
May 2020

Version 2.1 Revision 1.0

Rev 4 Units

*Laundry Jet
2001 Challenger Avenue
Oroville, CA 95965*





Document Revisions

| Date | Version Number | Document Changes |
|-----------|----------------|--|
| 4/12/2017 | 1.0 Rev 0.1 | Plus Jet Pack Installation Guide - Rev 3 Units |
| 7/21/2017 | 1.0 Rev 0.2 | Plus Jet Pack Installation Guide - Rev 3 Units |
| 5/4/2020 | 2.1 Rev 1.0 | Plus Jet Pack Installation Guide - Rev 4 Units |
| | | |
| | | |
| | | |
| | | |
| | | |
| | | |



Table of Contents

| | | |
|---|--|-------|
| 1 | Introduction..... | 5-6 |
| 2 | Contents | 7 |
| 3 | Pipe Installation Overview..... | 8-12 |
| | 3 - Components & Tools | 8 |
| | 3.1 - Pipe Installation Standards | 9 |
| | 3.2 - Port Drop Installation | 10 |
| | 3.3 - Port 90 Installation | 11 |
| | 3.4 - Jet Pack Pipe Drop | 12 |
| 4 | Wave Port Installation..... | 13-18 |
| | 4 - Components & Tools | 13 |
| | 4.1 - Port 90 Mount Bracket - Standard Installation..... | 14 |
| | 4.2 - Port 90 Tension Ring - In-Field Installation..... | 15 |
| | 4.3 - Port 90 Trim Pack - In-Field Installation..... | 16 |
| | 4.4 - Port 90 Trim Pack Installation | 17 |
| | 4.5 - Wave Port Installation | 18 |
| 5 | Plus Jet Pack Installation | 19-31 |
| | 5 - Components & Tools | 19 |
| | 5.1 - Jet Pack Installation | 20-31 |
| 6 | Warranty | 32 |
| 7 | Engineering Prints | 33-37 |

1 Introduction

Laundry Jet is the only modern, on demand whole home vacuum laundry delivery system. Laundry Jet works with both single and multi-story homes, or commercial buildings using our efficient patented vacuum system to transport dirty laundry at the touch of a button. This makes it possible to send laundry from multiple locations in your home instantly to the laundry room.

The first laundry chutes were a simple hole in the floor. Since then not much has changed. By definition the laundry chute only works with gravity so is restricted to multi level homes. The hole and later chute's were restricted in location as they needed to be directly above, or nearly above, the final collection or cleaning location to make them effective, and they must not interfere with the design of the building.

No matter if you have a single story 1 bedroom home or multi story 20 room home, Laundry Jet will work for you, sending your laundry up, around, and wherever you want it to go in your home or building.

Gone are the days of piles of soiled clothing in bedrooms and bathrooms, waiting for someone to collect and carry them to the laundry room. No more negotiating the stairs with your face in armfuls of dirty laundry or heavy bulky laundry baskets.



The Laundry Jet installation is comprised of three elements:

- Laundry Jet Ports mounted in bedrooms, dressing rooms or bathrooms
- The laundry room Wall mounted or Cabinet Mount Vacuum Unit
- The PVC pipe and fittings that connect the ports to the laundry room through the attic space

Vacuum Laundry Pipe

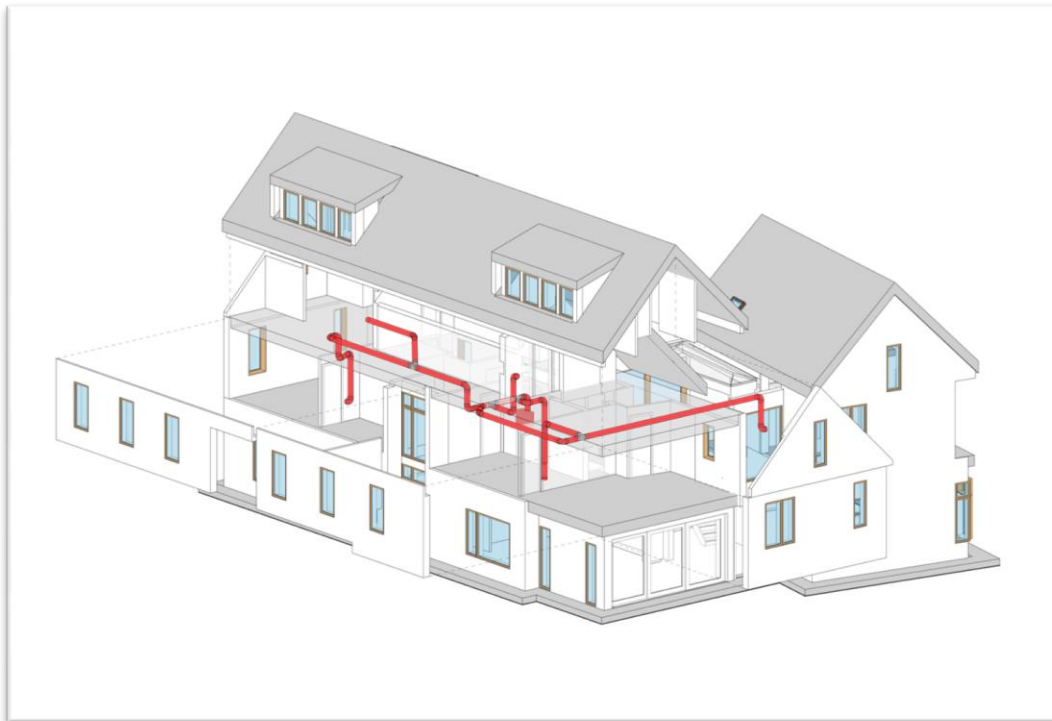
Laundry Jet specifies 6" SDR35 White Solvent Weld PVC pipe and fittings. This piping is light weight to make install quick and easy.

PVC piping is designed to have a smooth transition in between fittings and connections which ensures that clothing, bedding and towels will travel smoothly to the laundry room.

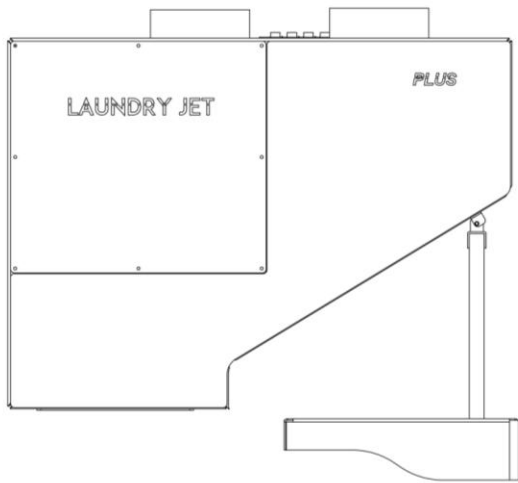
Pipe & Fittings

6" SDR35 White Solvent Weld PVC pipe 10' x 6"

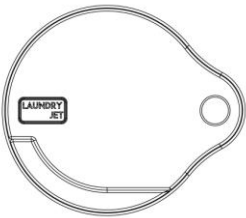
All Fittings are 6" SDR35 White Solvent Weld



2 Contents



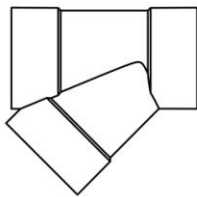
Laundry Jet Plus Jet Pack



Wave Port

Pipe Components

All Fittings are 6" SDR35 White Solvent Weld



6 Inch Wye



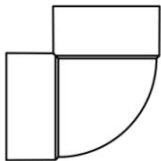
6 Inch 45° Elbow



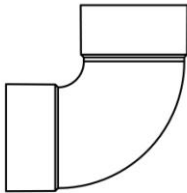
6 Inch Coupler



6 Inch Cleanout



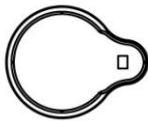
6 Inch 90°



6 Inch Swept 90°



Port 90 Tension Ring

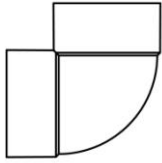


Port 90 Trim Kit

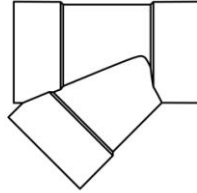


3 Pipe Installation Overview

Components



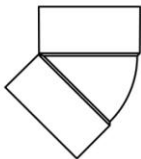
Port 90 Assembly



6 Inch Wye



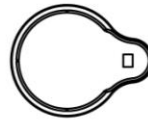
6 Inch Cleanout Adapter



6 Inch 45° Elbow



Port 90 Tension Ring



Port 90 Trim Kit

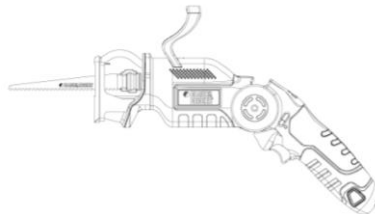


Cable Bundle

Tools



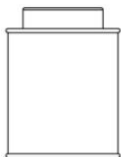
Cordless Drill



Sawzall



Tape Measure



Clear 2 Part PVC Glue

PVC Glue



1" Wood Screw

1" Wood Screw

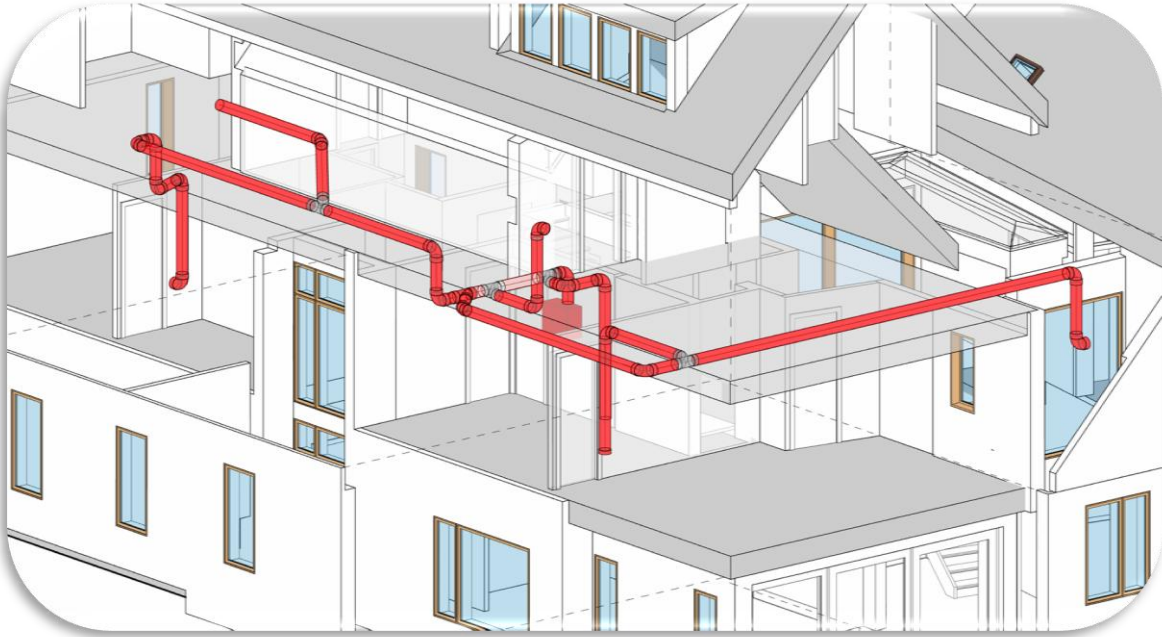


Plumber's Metal Strapping Tape

Plumber's Metal Strapping Tape

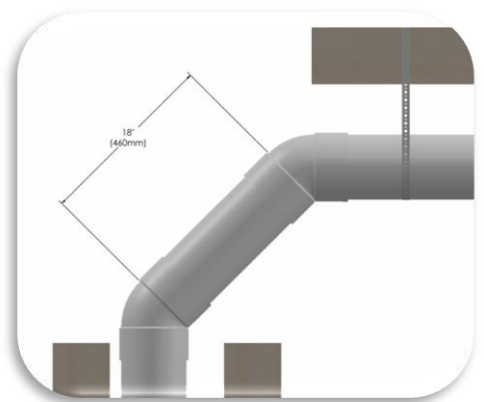
3.1 Pipe Installation Overview

Pipe Installation Standards

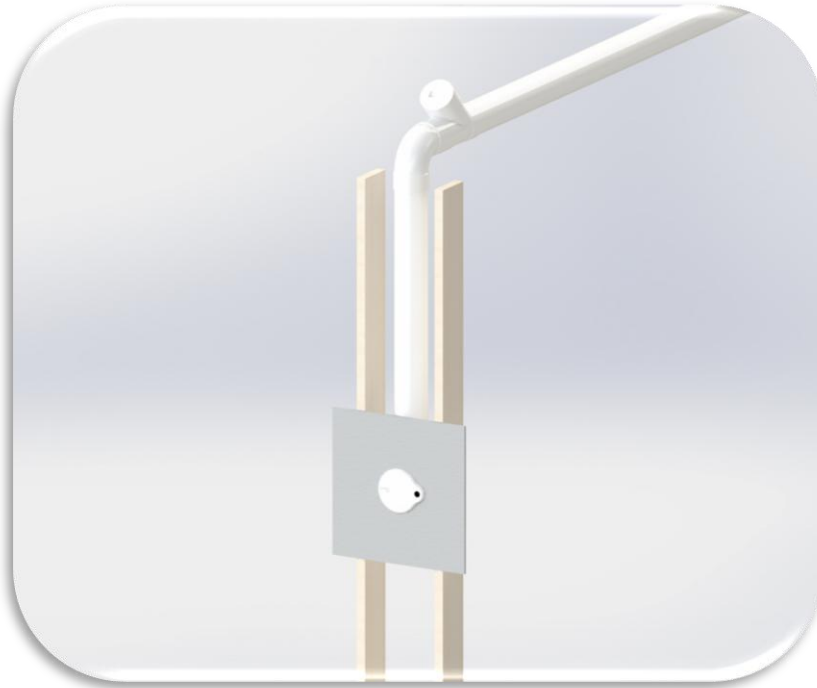


Required Piping Installation Standards

- All joints must use a minimum entry angle of 45 degrees with a break distance of 18 Inches (460 MM). See Image below.
- Pipe cuts must be straight and de burred before seating.
- Pipe must be completely seated in fitting connections.
- Seal all joints using standard PVC glue. Connections must be glued around 360 degrees to ensure maximum system performance.
- System must be strapped with “plumbers tape” (or equivalent) every 6 feet. Port 90 must be strapped and secured prior to Port installation.
- Install Cleanout ports every 50 feet on angled runs. Straight trunk lines can run up to 100 feet with cleanouts at either end.



3.2 Pipe Installation Overview

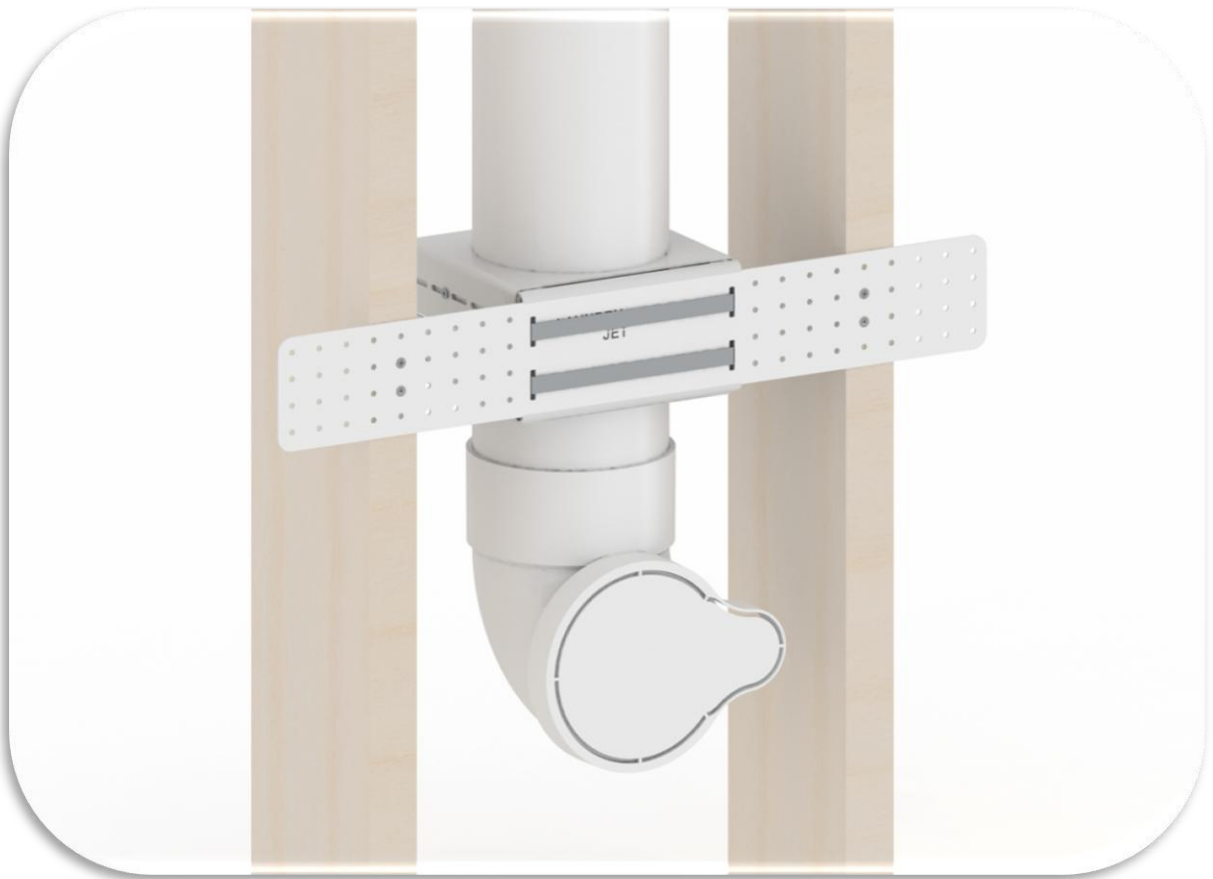


Port Drop Installation

- Mount port 90 using the Port 90 Mount Bracket. See Page 11 for Port 90 Installation. Use a standard SDR 6" Swept 90 for your Port Drop Installation. Block and strap drop line at midway point



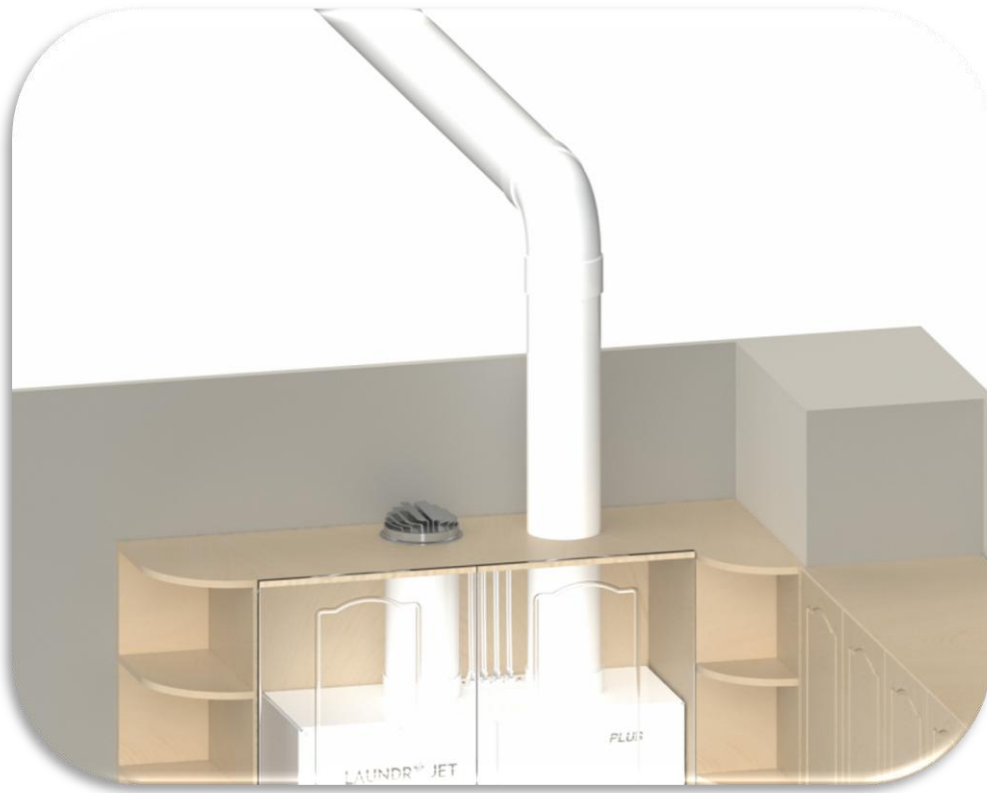
3.3 Pipe Installation Overview



Port 90 Installation

- Port 90 must be installed with front face of Port 90 Trim Kit flush with the finished face of interior wall.
- Port 90 must be installed on a plum horizontal port drop line.
- Use the Port 90 Mount Bracket to align and secure the Port 90 to the frame (unless a remodel)

3.4 Pipe Installation Overview

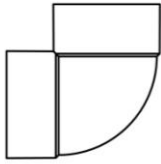


Plus Jet Pack Pipe Drop

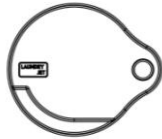
- Install a standard swept 90 drop to each port using a swept 90 elbow.
- Strap pipe at attic to ceiling transition.

4 Wave Port Installation

Components



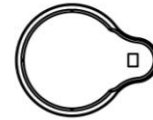
Port 90



Wave Port



Port 90 Tension Ring

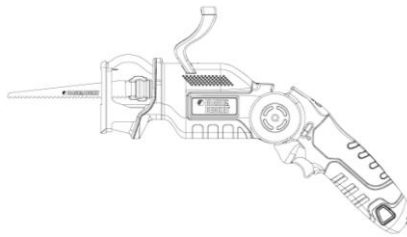


Port 90 Trim Kit

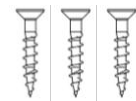
Tools



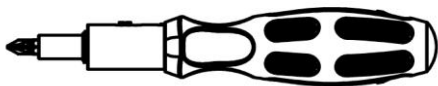
Stud Finder



Sawzall

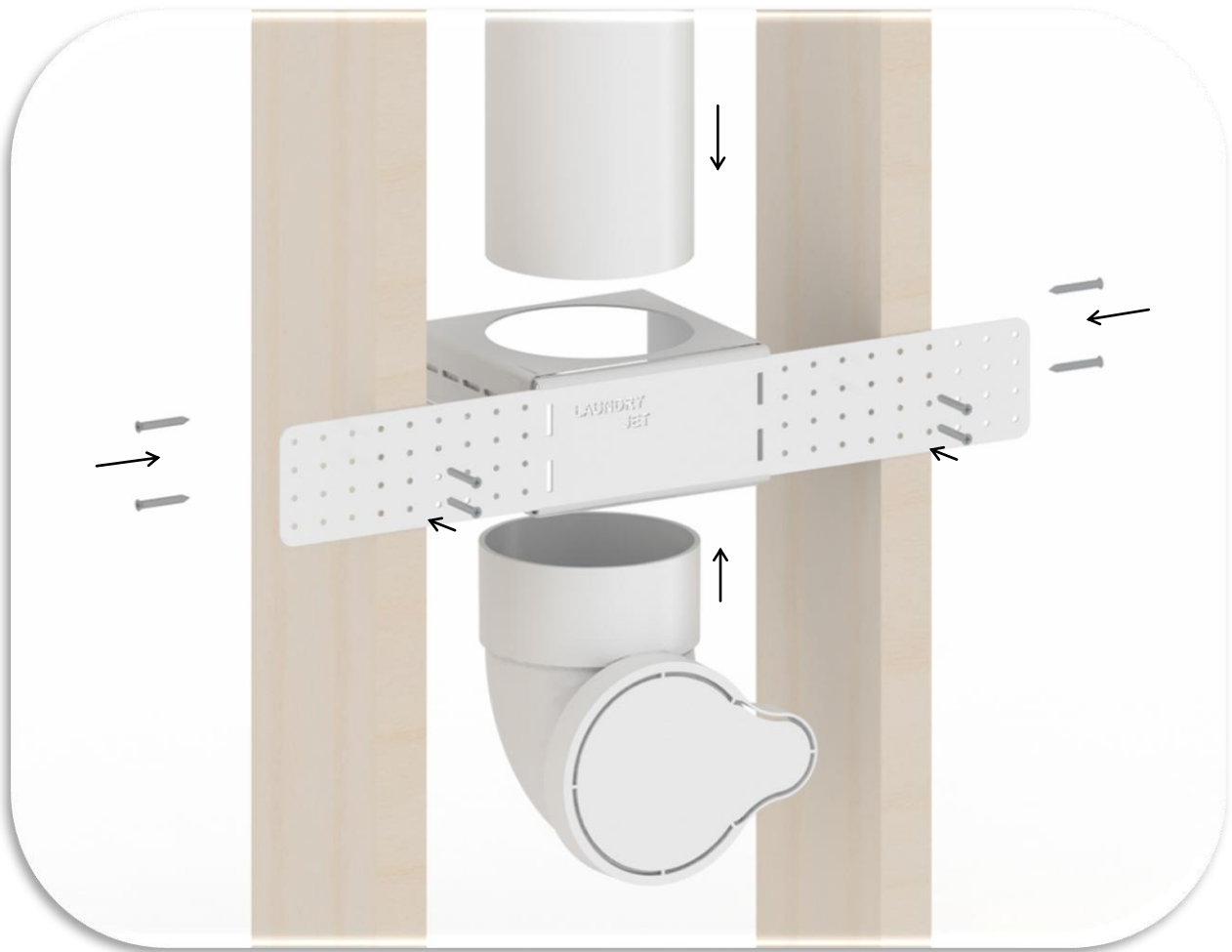


Retention Ring Screws



Screw Driver

4.1 Step 1 - Port 90 Mount Bracket - Standard Installation

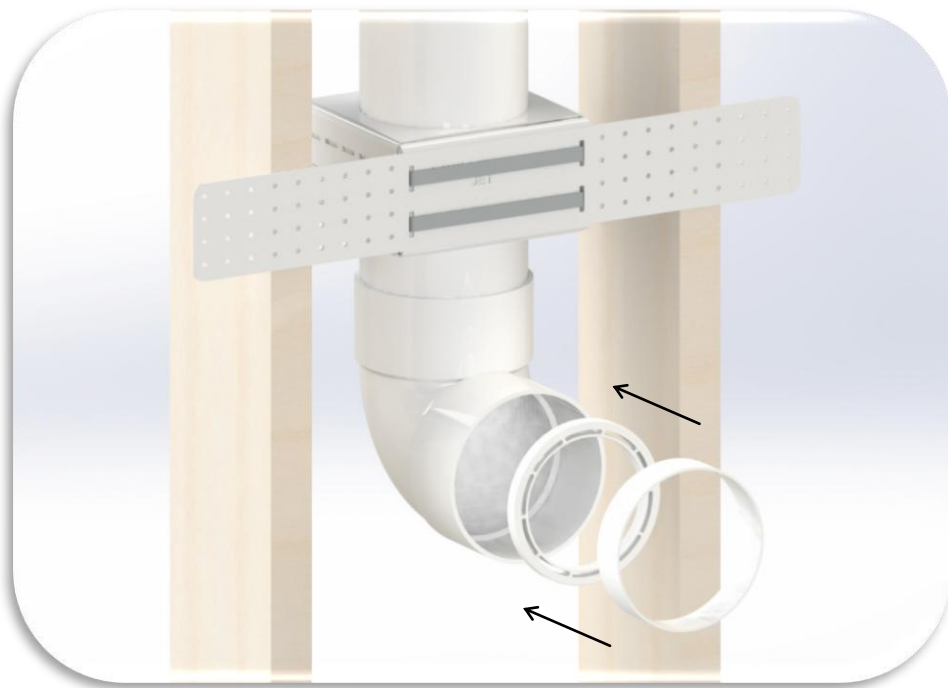


Port 90 Mount Bracket

- Use the Port 90 Mount Bracket to align and secure the Port 90 to the frame
- Set Port height
- Attach 2 pipe clamps
- Set elevation screws
- **Do not install Ports behind doors**

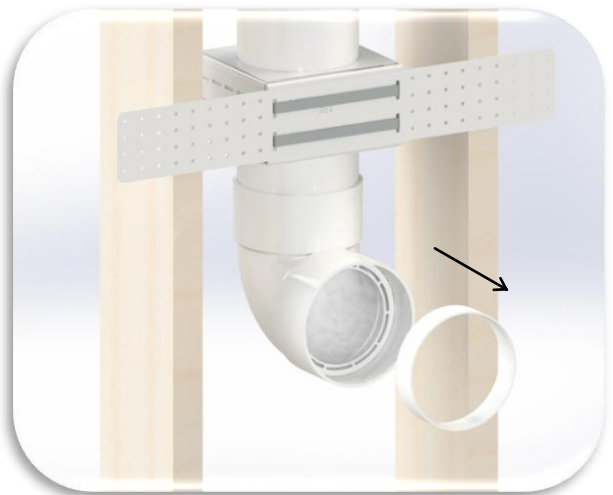


4.2 Step 1 - Port 90 Tension Ring - **In-Field Installation**



Port 90 Tension Ring

- Apply the 2 part PVC glue on the inside face of the Port 90, approximately 1" from the front face and seat the tension ring using the offset ring.
- Make sure that one of the slots on the tension ring is at the 6 o'clock position. Remove the offset ring.

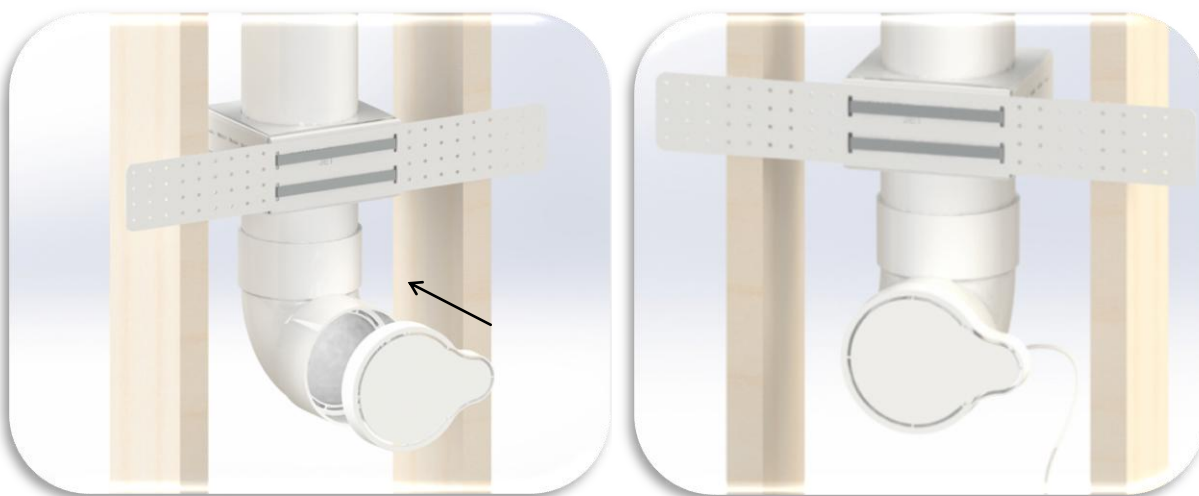


4.3 Step 2 - Port 90 Trim Pack - **In-Field Installation**



Port 90 Trim Pack

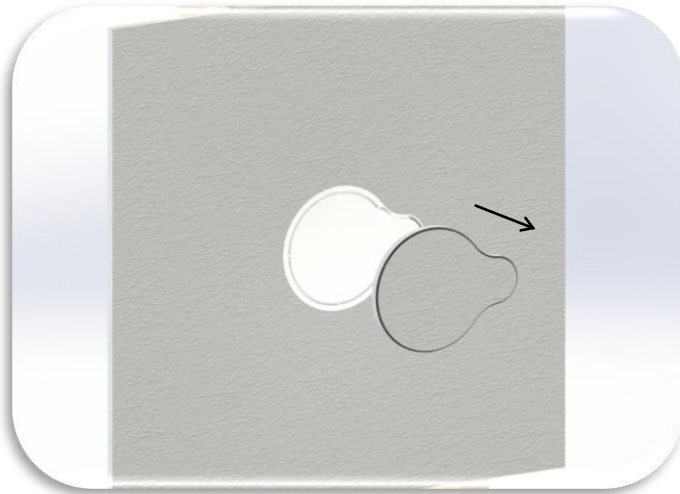
- Using the clip on the inside of the Trim Pack, secure the RJ45 Cable into the clip
- Using the 2 part PVC Glue, mount the Trim Pack onto the Port 90. Make sure that the small diameter of the trim pack is at the 3 o'clock position.



4.4 Step 2 - Port 90 Trim Pack

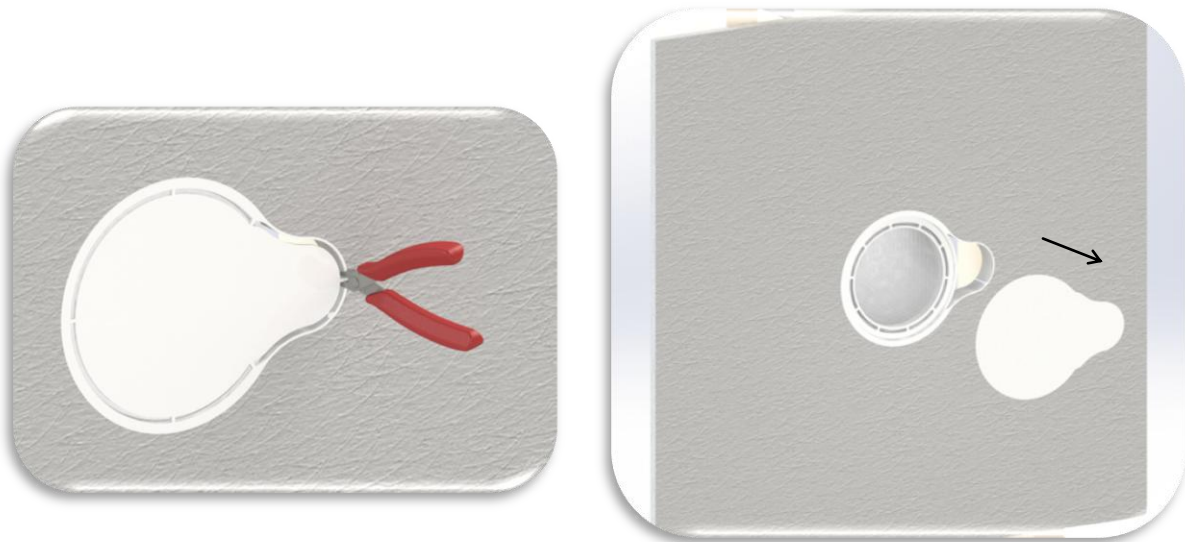
Port 90 Trim Pack

- Install sheetrock over trim pack
- Trim around outside of trim pack

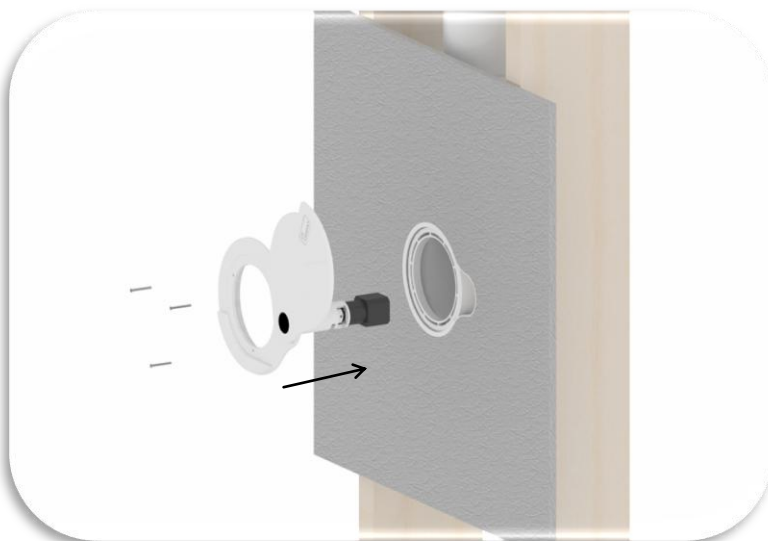


Set Finish

- Cut trim pack face tabs
- Remove protective plastic face plate
- Disconnect RJ45 cable from back of face plate

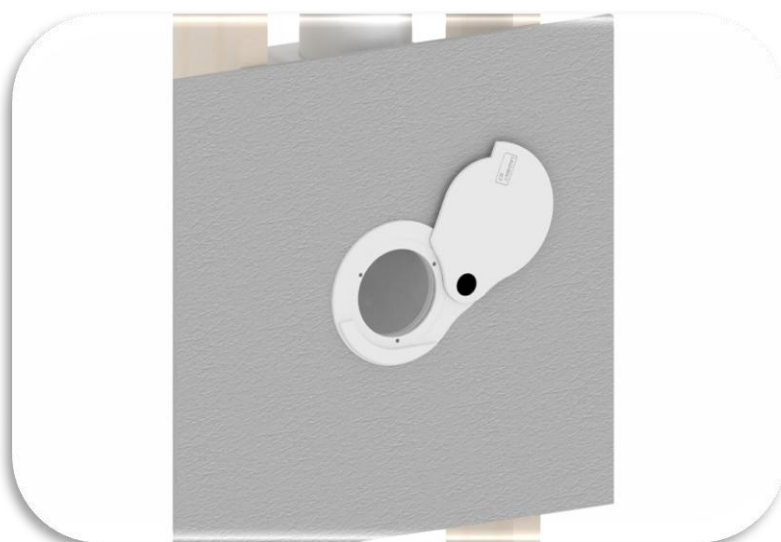


4.5 Step 3 - Wave Port Assembly



Wave Port Assembly

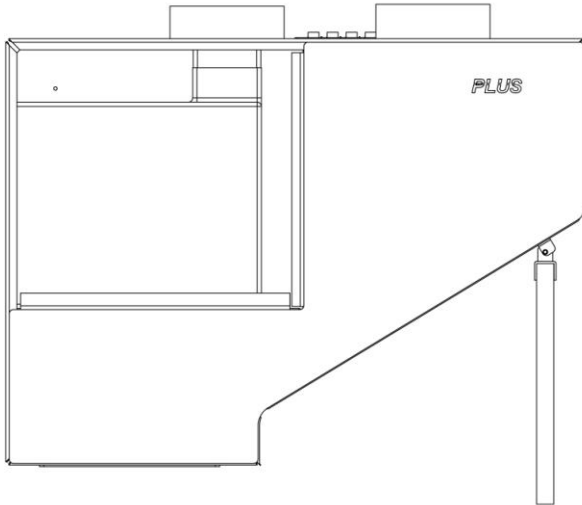
- Connect RJ45 male connector to female connector on back of port
- Slide Port into place
- Attach port using (3) 6-32x2" machine screws and nuts



- Align Port for final adjustment
- Tighten 3 screws once the port is properly adjusted

5 Plus Jet Pack Installation

Components



Plus Jet Pack Housing



Plus Jet Pack Front Panel

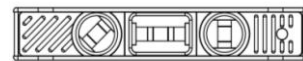
Tools



Cordless Drill



Stud Finder



Level

5.1 Plus Jet Pack Installation



Step 1

- Modify the Custom cabinet to accommodate the Plus Cabinet. Using the provided drawings in Section 7, use appropriate tooling to remove the necessary material from the cabinet.

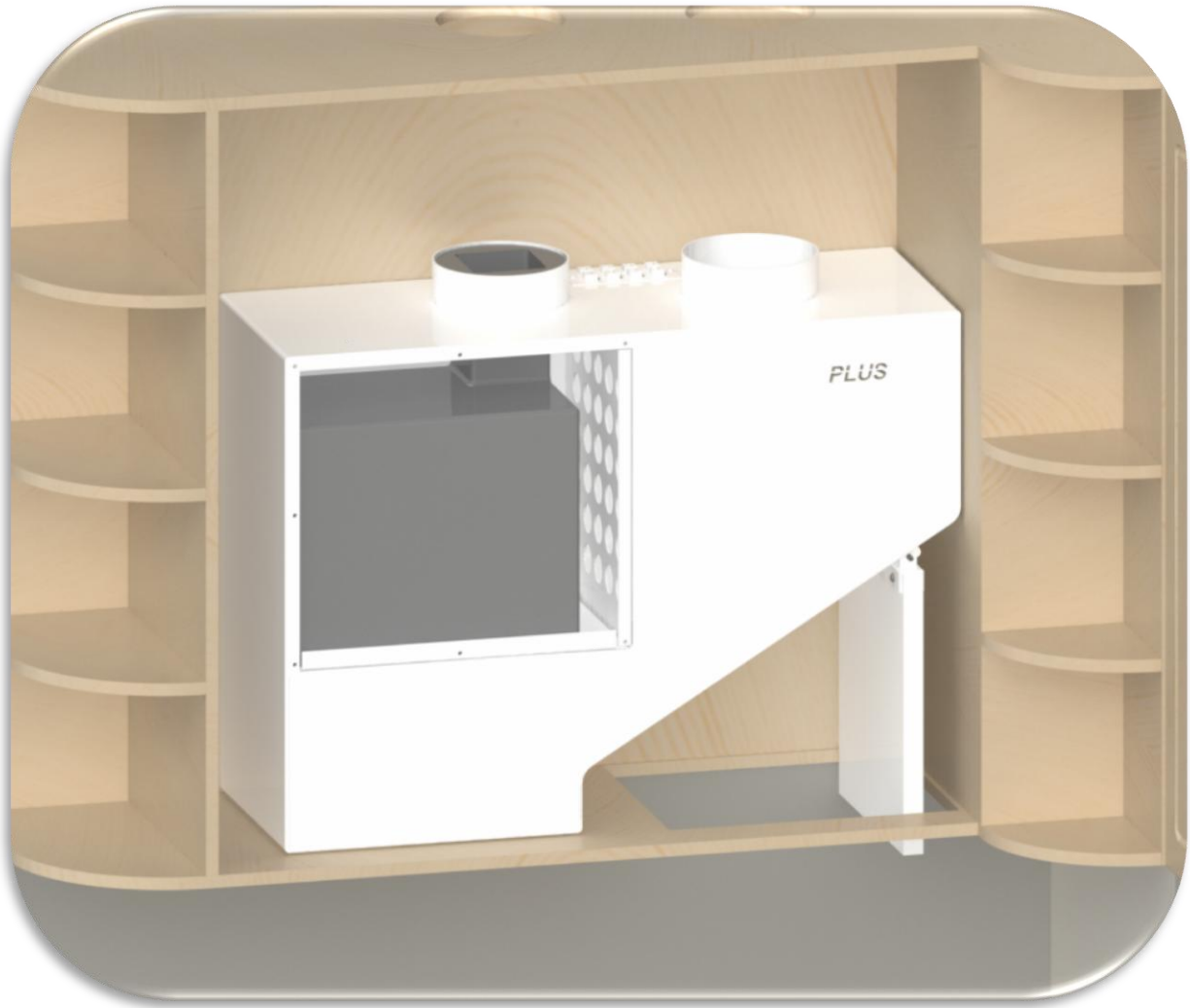
5.2 Plus Jet Pack Installation



Step 2

- If possible, provide the Installation spec to the cabinet maker ahead of build. Please reference Section 7 for Engineering Prints.

5.3 Plus Jet Pack Installation



Step 3

- Locate the Plus Cabinet into the custom cabinet with the Plus Cabinet oriented to the right until it sits flush with the right side face of the custom cabinet. (Note: Insert the power cord through the small hole to the back left of the cabinet as you move the Plus Cabinet into place. Ensure the power cord is not pinched under the Plus Cabinet.)

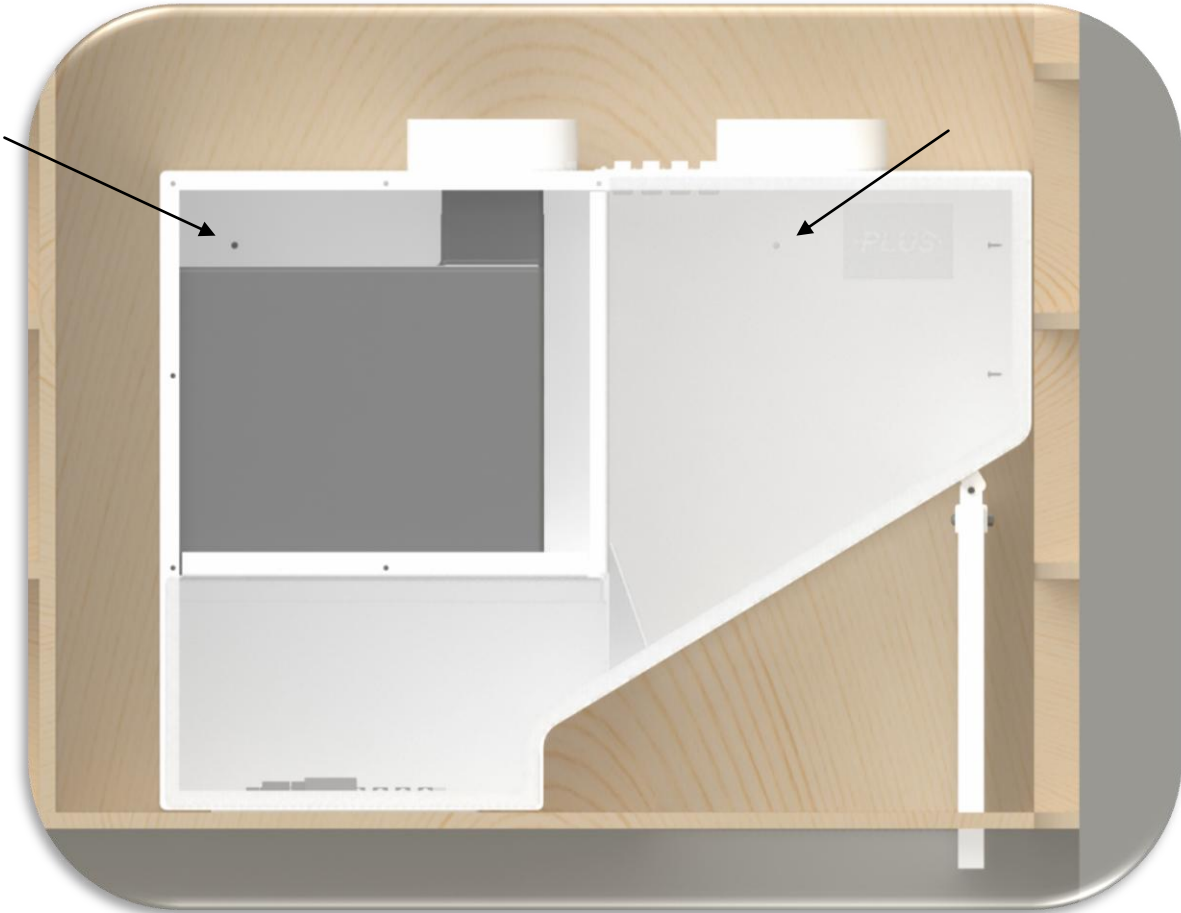
5.4 Plus Jet Pack Installation



Step 4

- Using a level ensure that the Plus Cabinet is level and to the back and right of the cabinet. In 4 places using provided hardware, set the 4 set screws that fix the right face of the Plus Cabinet to the custom cabinet.

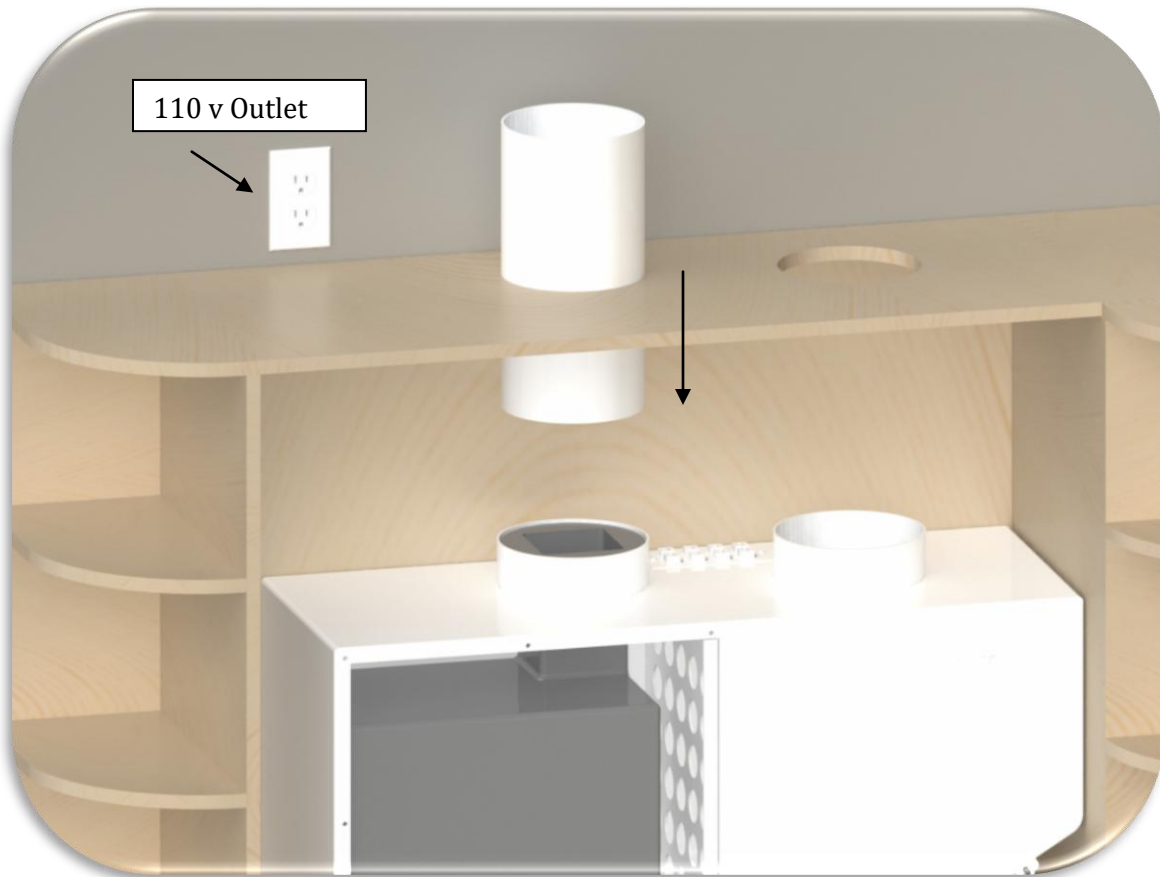
5.5 Plus Jet Pack Installation



Step 5

- Set 2 set screws through the back wall of the Plus Cabinet into the custom cabinet.

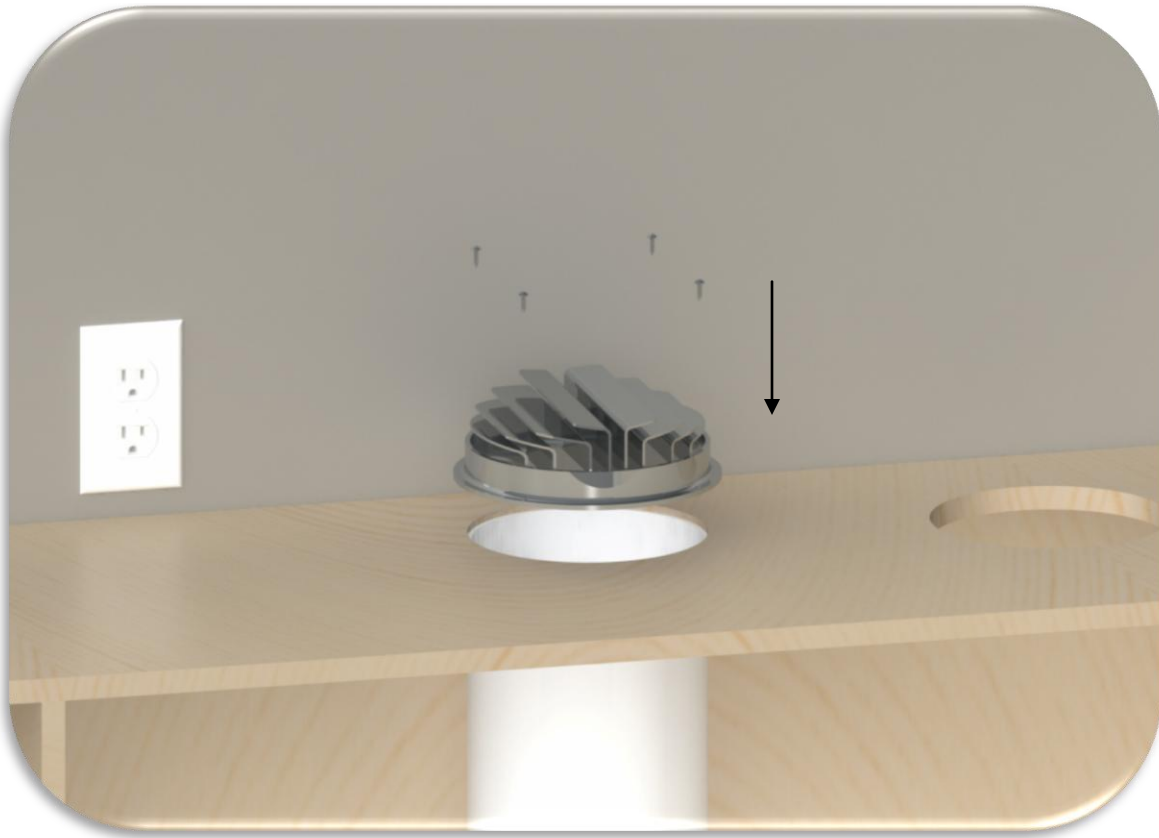
5.6 Plus Jet Pack Installation



Step 6

- Cut out a section of 6" SDR 35 pipe so that it sits flush with the top of the cabinet and bond into place. This should not sit up out of the top of the cut hole but flush or slightly below the cabinet surface. Use a window sealer to seal between the pipe penetration and the custom cabinet.

5.7 Plus Jet Pack Installation



Step 7

- Mount the diffuser assembly using the provided hardware.

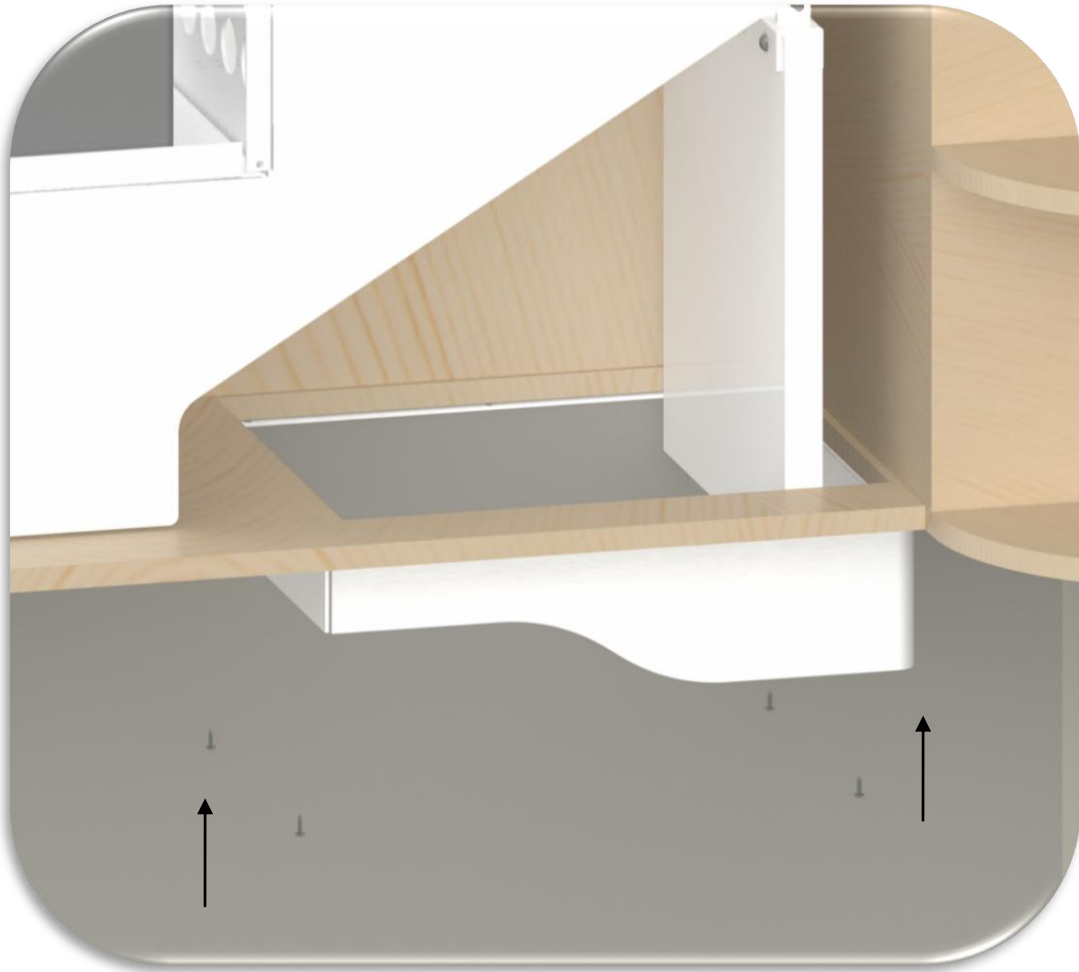
5.8 Plus Jet Pack Installation



Step 8

- Connect the trunk line to the Vac Chamber flange. Bond in place ensuring a tight supply seal.

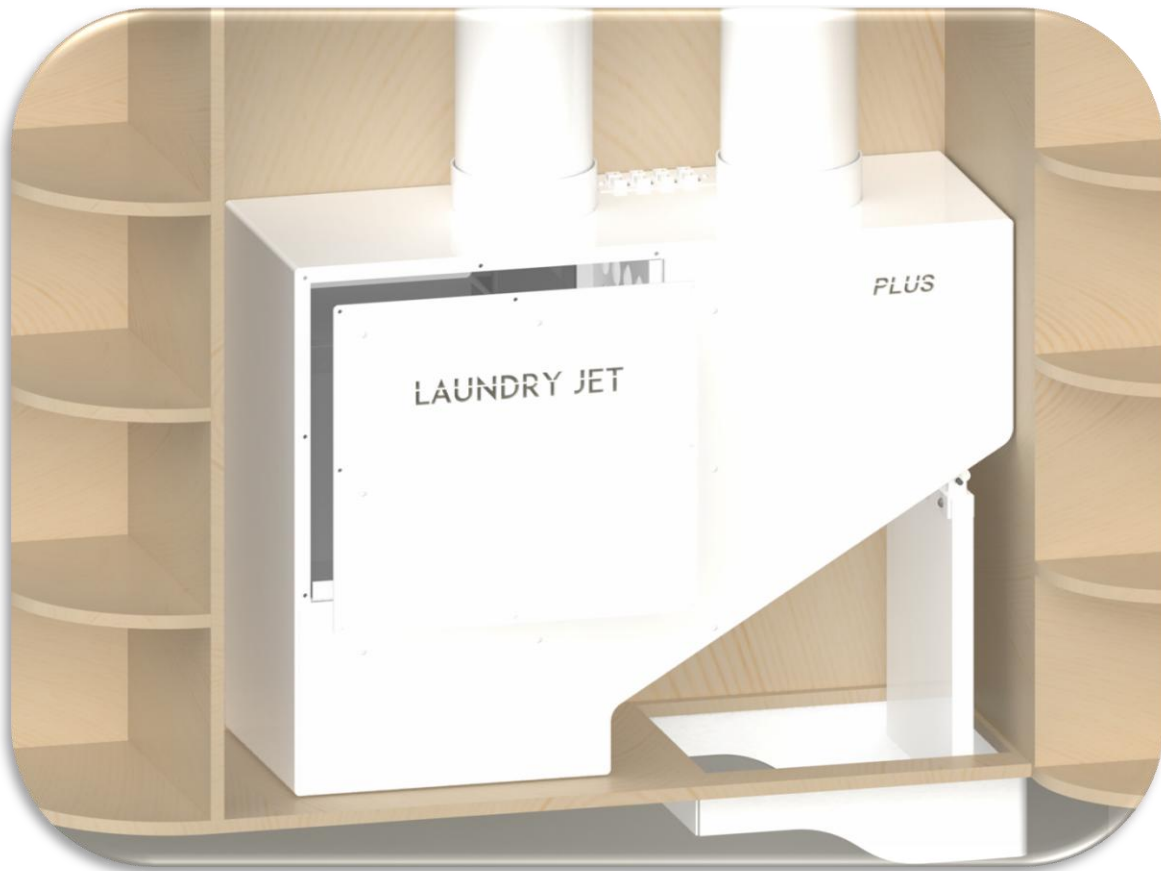
5.9 Plus Jet Pack Installation



Step 9

- Mount the Cosmetic Discharge Trim to the bottom of the Custom Cabinet centered around the cut out discharge opening.
- Using the provided hardware in 4 places, screw the discharge trim into place. (There is no need to seal this connection.)

5.10 Plus Jet Pack Installation



Step 10

- Attach main front panel. Prior to attaching the panel, make sure the seal material is in good shape and has not been pulled off or torn during the installation process. Attach panel using the provided hardware.

5.11 Plus Jet Pack Installation



Step 11

- Test the discharge port door. Make sure that the door moves freely without drag as it cycles open and close.
- Open & close cabinet doors to make sure they have adequate clearance to open and close freely. There is no need for a seal here as the Plus Cabinet is a sealed system.

5.12 Plus Jet Pack Installation



Step 12

- Test all RJ45 connections prior to the next step (T568B)
- Ensure that the Jet Pack is not plugged in.
- Connect all the RJ45 cables as shown above.
- Make sure all Wave Ports are fitted and properly connected and ready to run
- Plug in your Jet Pack unit to the appropriate power supply
- Proceed to verify proper operation of Wave ports

6 Warranty

Lifetime Limited Warranty

Laundry Jet is protected by a limited lifetime warranty. This warranty is valid from the date of purchase, for as long as you are the original owner, and the system remains at its original place of installation and as long as the warranty form has been completed at our website. <http://www.laundry-jet.com/warranty>.

- Limited lifetime warranty on metal body.
- 1 year standard warranty on the Laundry Jet Vac Pac Power Unit
- Vacuum Laundry pipe 1 year warranty.
- Vacuum Ports 3 year warranty
- Switches and LEDS 3 year warranty

THIS IS THE SOLE AND EXCLUSIVE WARRANTY OF LIFE FLOW, LLC – LAUNDRY JET. IMPLIED WARRANTIES, INCLUDING IMPLIED WARRANTIES OF MERCHANTABILITY OR FITNESS FOR A PARTICULAR PURPOSE ARE LIMITED IN DURATION OF LIMITED WARRANTY PERIOD.

Should any defect in material or workmanship appear within the time of the above warranty, the selling Laundry-Jet Dealer should be contacted. The Dealer shall repair or replace (at Laundry Jet's sole option), or credit, such part or parts in accordance with the applicable warranty period stated above. Life Flow LLC – Laundry Jet shall not be responsible for such service unless provided by an authorized Laundry Jet Dealer utilizing authentic Laundry Jet replacement parts.

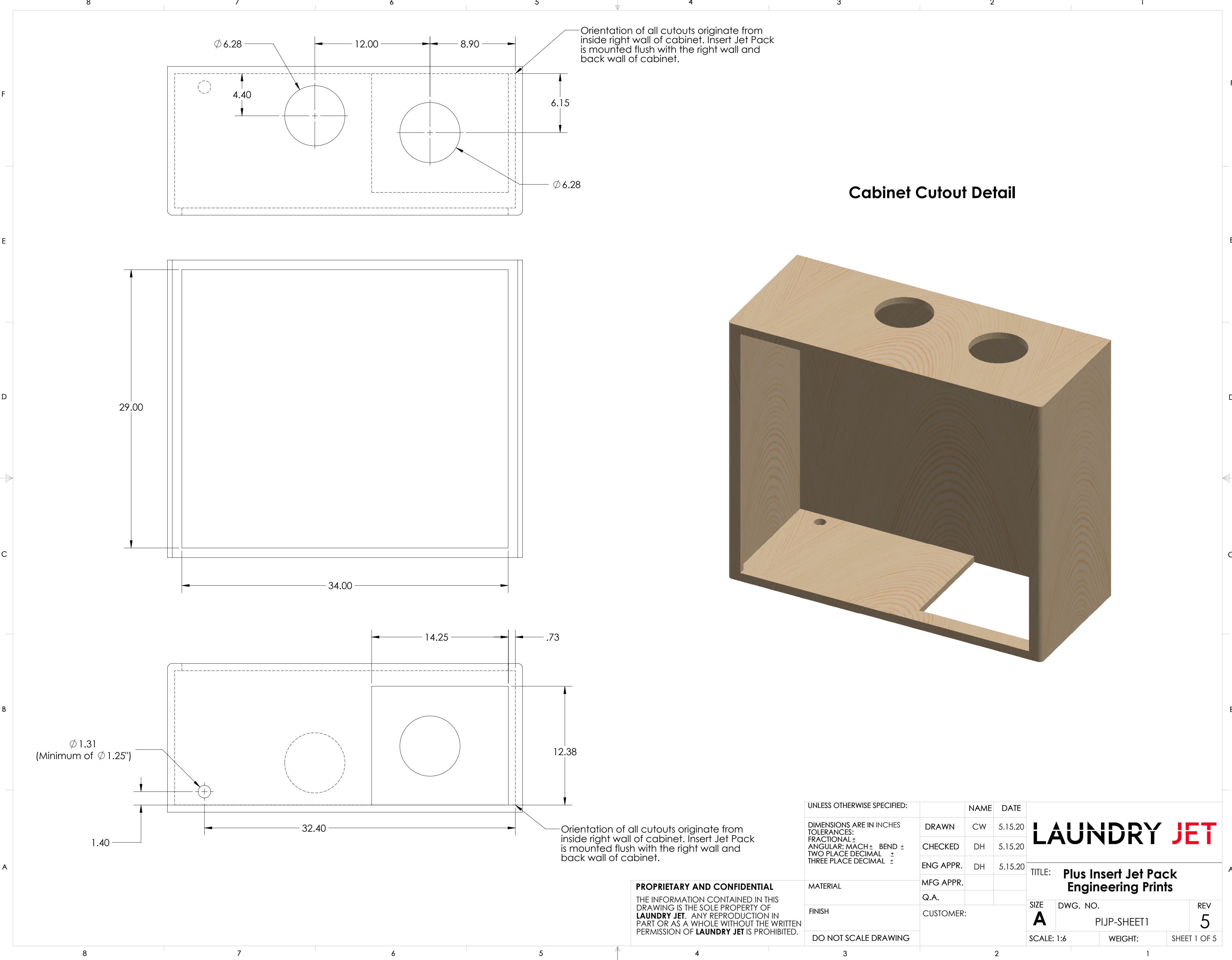
This warranty does not apply to loss or damage resulting from (at Laundry Jet's sole option) normal wear and tear, commercial use, vacuum of drywall dust, neglect, abuse acts of God, accidents, improper installation, improper modification or alteration, improper use and operation or failure to provide proper maintenance.

Some States or Provinces do not allow exclusion of warranties or limitations of damages, so the above limitations and exclusions may not apply to you. This warranty gives you specific legal rights. You may have additional rights, which vary from State to State, or Province to Province. This limited warranty applies to USA and Canada installations only. For specific warranty information for your Country, consult your authorized Laundry Jet Dealer.

Other warranties apply to other parts of this equipment and optional accessories. Please contact the material accompanying the individual items.

**LIFE FLOW LLC – LAUNDRY JET, SHALL NOT BE RESPONSIBLE FOR ANY
CONSEQUENTIAL, INCIDENTAL, OR SPECIAL DAMAGES ARISING FROM THE USE OF
THIS SYSTEM.**

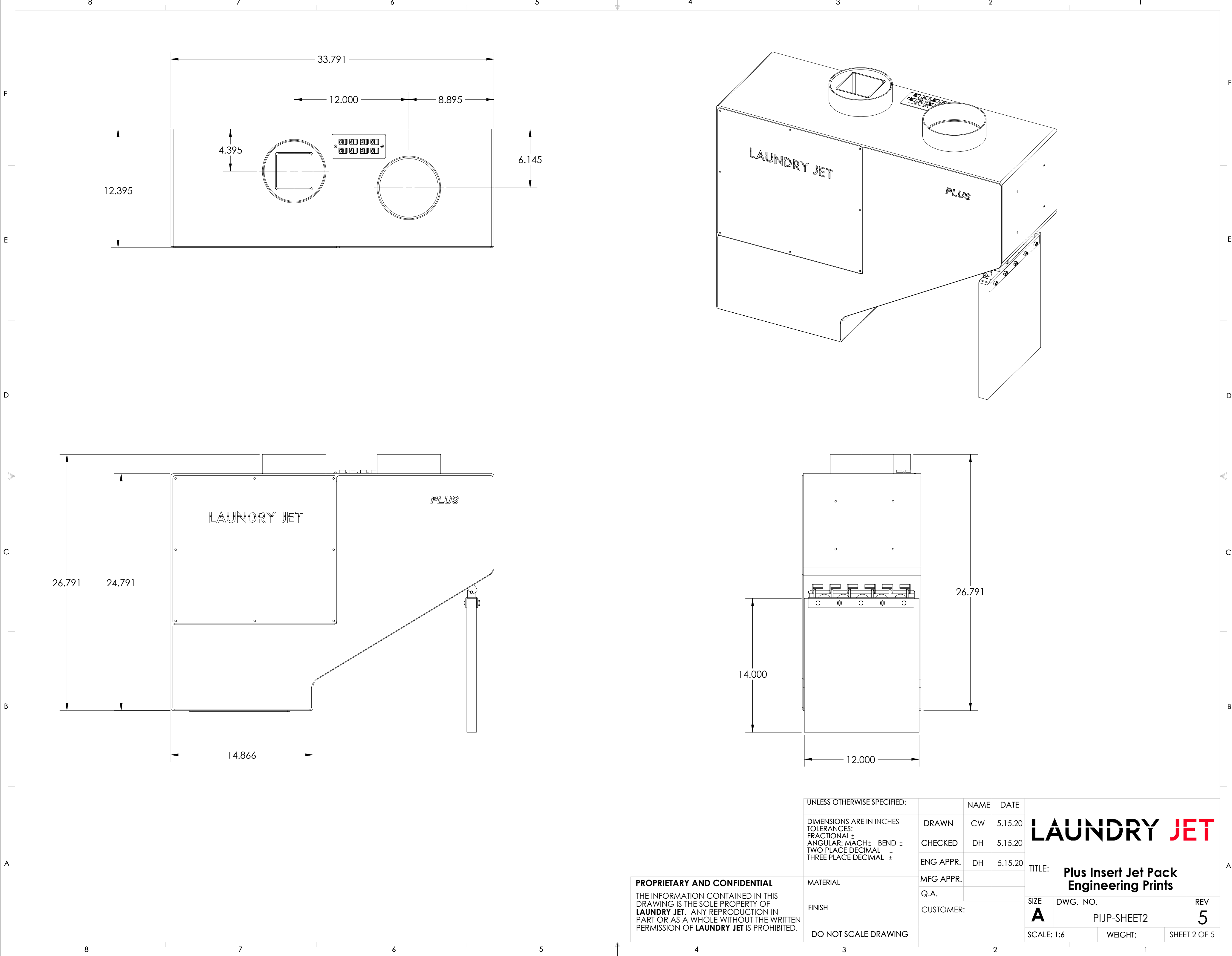
Extended warranties are available at the time of purchase.

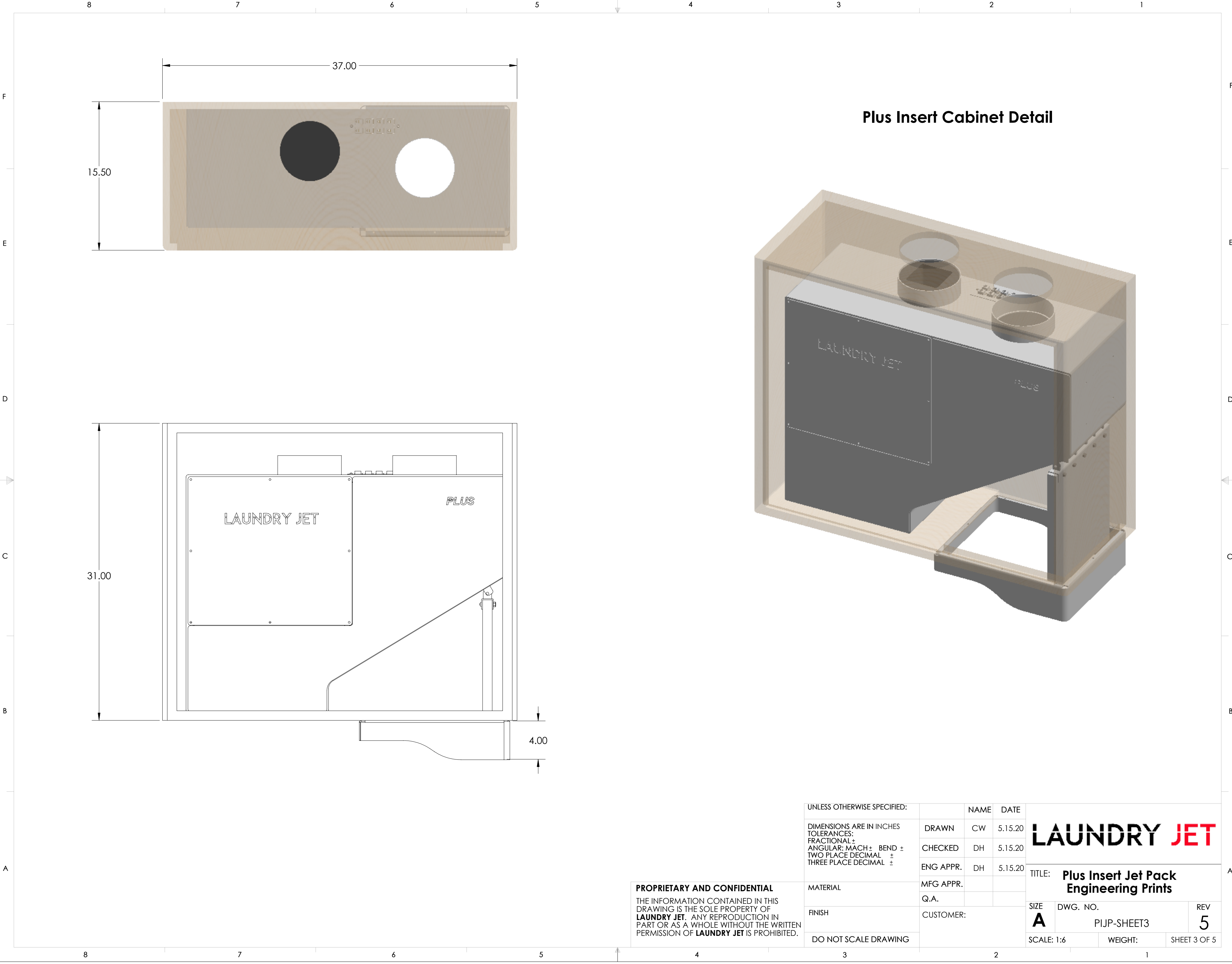


Cabinet Cutout Detail

PROPRIETARY AND CONFIDENTIAL
THE INFORMATION CONTAINED IN THIS
DRAWING IS THE SOLE PROPERTY OF
LAUNDRY JET. ANY REPRODUCTION IN
PART OR AS A WHOLE WITHOUT THE WRITTEN
PERMISSION OF **LAUNDRY JET** IS PROHIBITED.

| UNLESS OTHERWISE SPECIFIED: | | | | <div>LAUNDRY JET</div> <div>Plus Insert Jet Pack Engineering Prints</div> | | |
|--|-----------|----|---------|---|-------------------------|-----------------|
| DIMENSIONS ARE IN INCHES TOLERANCES: FRACTIONAL: \pm ANGULAR: MACH \pm BEND \pm TWO PLACE DECIMAL \pm THREE PLACE DECIMAL \pm | DRAWN | CW | 5.15.20 | | | |
| | CHECKED | DH | 5.15.20 | | | |
| | ENG APPR. | DH | 5.15.20 | | | |
| | MFG APPR. | | | | | |
| MATERIAL | | | | TITLE: Plus Insert Jet Pack Engineering Prints | | |
| FINISH | | | | Q.A. | | |
| DO NOT SCALE DRAWING | | | | CUSTOMER: | | |
| | | | | SIZE A | DWG. NO. PIJP-SHEET1 | REV 5 |
| | | | | SCALE: 1:6 | WEIGHT: | SHEET 1 OF 5 |



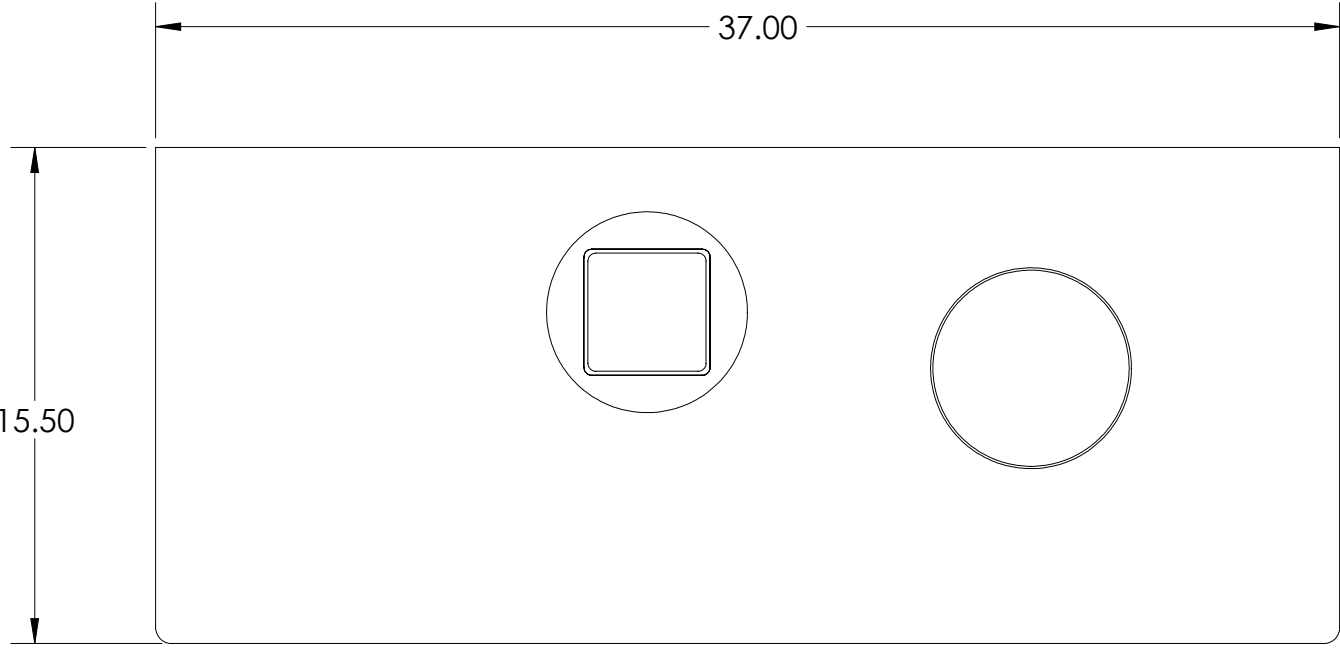


Plus Insert Cabinet Detail

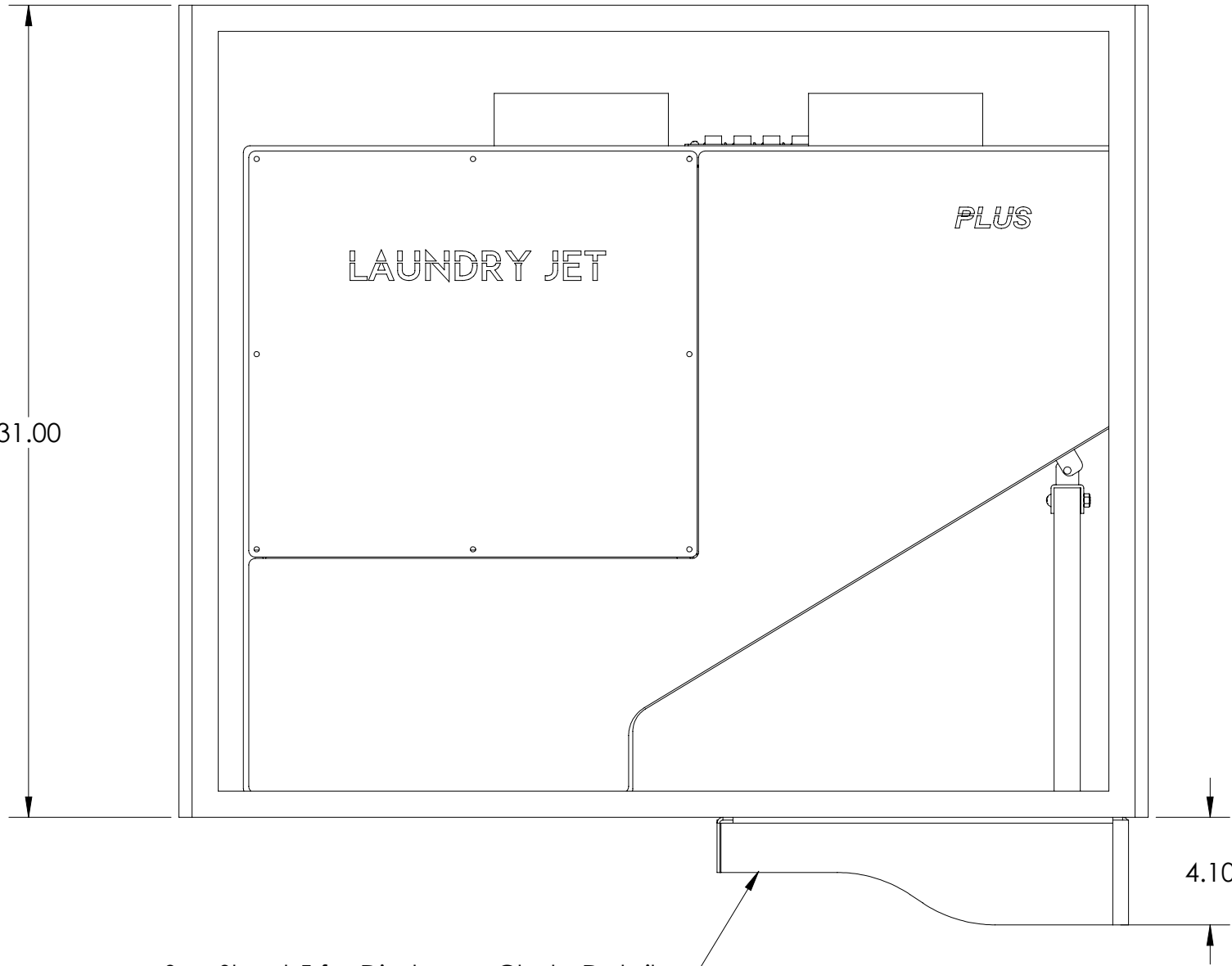
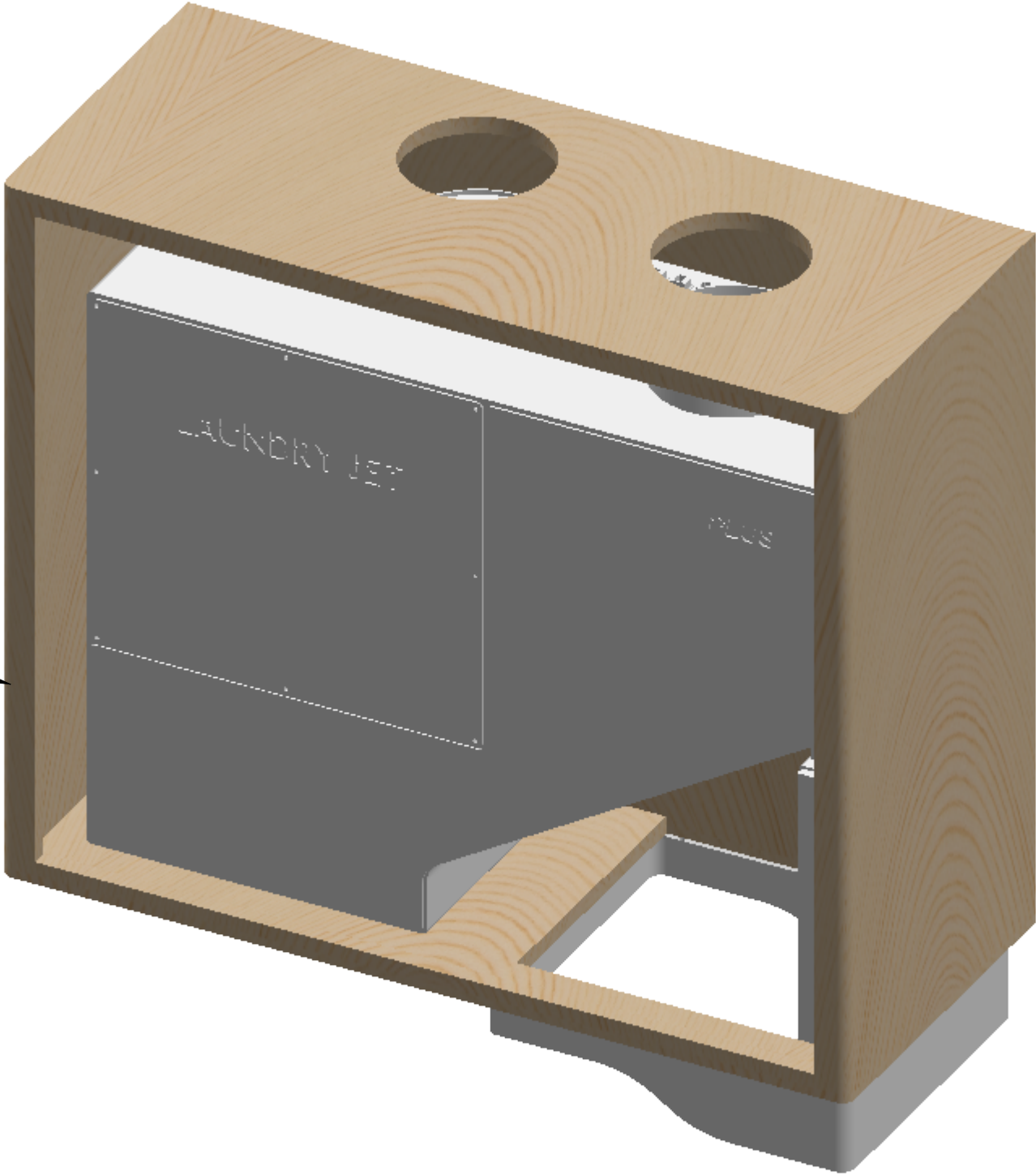
PROPRIETARY AND CONFIDENTIAL
THE INFORMATION CONTAINED IN THIS
DRAWING IS THE SOLE PROPERTY OF
LAUNDRY JET. ANY REPRODUCTION IN
PART OR AS A WHOLE WITHOUT THE WRITTEN
PERMISSION OF **LAUNDRY JET** IS PROHIBITED.

| | | | | | | |
|---|-----------|------|---------|---|-------------------------|--------------|
| UNLESS OTHERWISE SPECIFIED: | | NAME | DATE | <div>LAUNDRY JET</div> | | |
| DIMENSIONS ARE IN INCHES TOLERANCES: FRACTIONAL ± ANGULAR: MACH ± BEND ± TWO PLACE DECIMAL ± THREE PLACE DECIMAL ± | DRAWN | CW | 5.15.20 | | | |
| | CHECKED | DH | 5.15.20 | | | |
| | ENG APPR. | DH | 5.15.20 | | | |
| MATERIAL | MFG APPR. | | | TITLE: Plus Insert Jet Pack Engineering Prints | | |
| | Q.A. | | | | | |
| FINISH | CUSTOMER: | | | SIZE A | DWG. NO. PIJP-SHEET3 | REV 5 |
| DO NOT SCALE DRAWING | | | | SCALE: 1:6 | WEIGHT: | SHEET 3 OF 5 |

Defined Spacing is minimum requirement for insertion of the Insert Jet Pack Assembly. It is recommended that additional spacing be allowed for easy installation where possible.

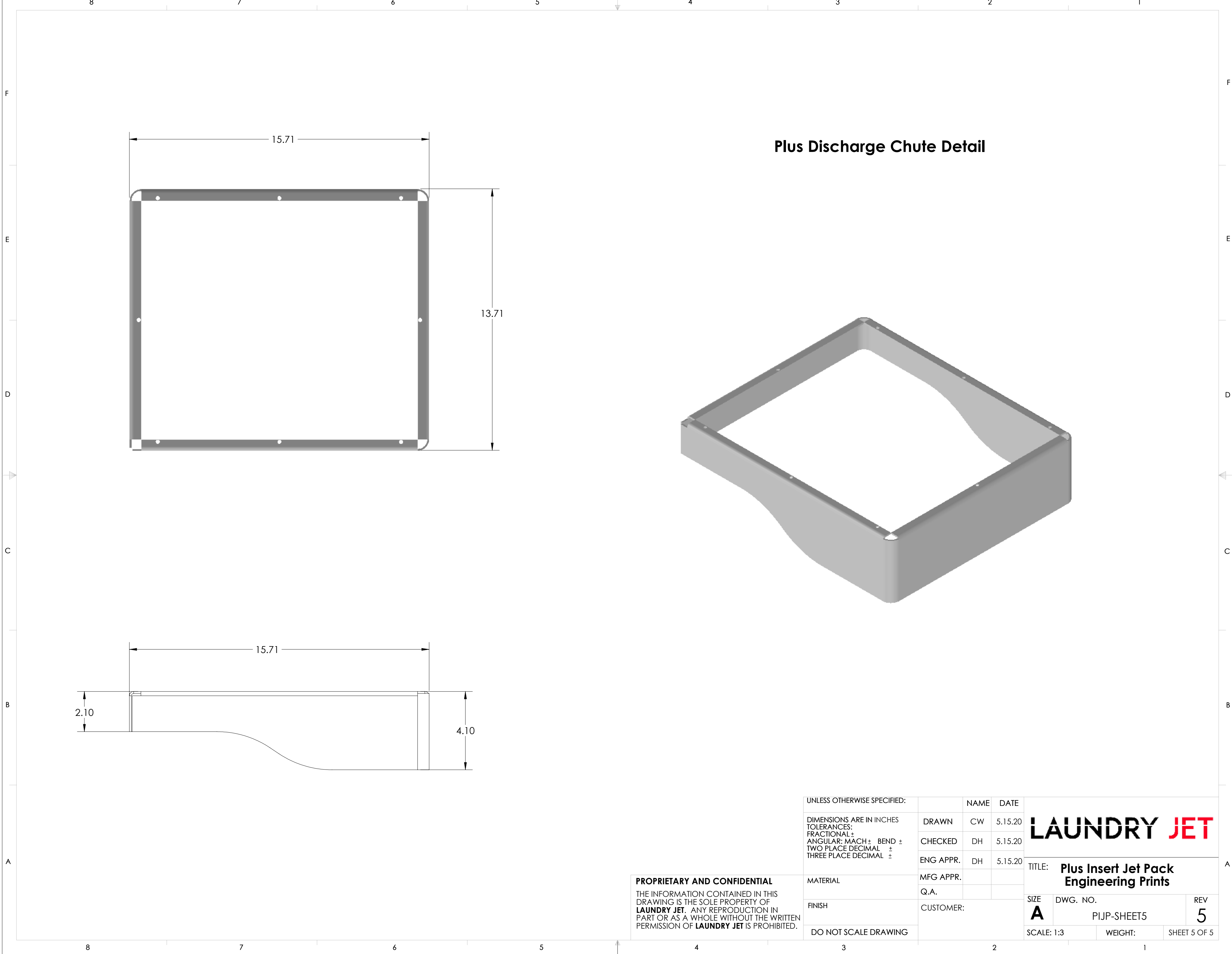


Plus Insert Cabinet Detail



PROPRIETARY AND CONFIDENTIAL
THE INFORMATION CONTAINED IN THIS DRAWING IS THE SOLE PROPERTY OF **LAUNDRY JET**. ANY REPRODUCTION IN PART OR AS A WHOLE WITHOUT THE WRITTEN PERMISSION OF **LAUNDRY JET** IS PROHIBITED.

| | | | | | | |
|---|-----------|------|---------|--|--|--|
| UNLESS OTHERWISE SPECIFIED: | | NAME | DATE | <div>LAUNDRY JET</div> <div>TITLE: Plus Insert Jet Pack Engineering Prints</div> <div>SIZE A DWG. NO. PIJP-SHEET4 REV 5</div> <div>SCALE: 1:6 WEIGHT: SHEET 4 OF 5</div> | | |
| DIMENSIONS ARE IN INCHES TOLERANCES: FRACTIONAL ± ANGULAR: MACH ± BEND ± TWO PLACE DECIMAL ± THREE PLACE DECIMAL ± | DRAWN | CW | 5.15.20 | | | |
| | CHECKED | DH | 5.15.20 | | | |
| | ENG APPR. | DH | 5.15.20 | | | |
| MATERIAL | MFG APPR. | | | | | |
| | Q.A. | | | | | |
| FINISH | CUSTOMER: | | | | | |
| DO NOT SCALE DRAWING | | | | | | |



Plus Discharge Chute Detail

PROPRIETARY AND CONFIDENTIAL
THE INFORMATION CONTAINED IN THIS
DRAWING IS THE SOLE PROPERTY OF
LAUNDRY JET. ANY REPRODUCTION IN
PART OR AS A WHOLE WITHOUT THE WRITTEN
PERMISSION OF **LAUNDRY JET** IS PROHIBITED.

| | | | | | | |
|---|-----------|------|---------|---|-----------------------------|--------------|
| UNLESS OTHERWISE SPECIFIED: | | NAME | DATE | <div>LAUNDRY JET</div> | | |
| DIMENSIONS ARE IN INCHES TOLERANCES: FRACTIONAL± ANGULAR: MACH± BEND ± TWO PLACE DECIMAL ± THREE PLACE DECIMAL ± | DRAWN | CW | 5.15.20 | | | |
| | CHECKED | DH | 5.15.20 | | | |
| | ENG APPR. | DH | 5.15.20 | | | |
| MATERIAL | MFG APPR. | | | TITLE: Plus Insert Jet Pack Engineering Prints | | |
| | Q.A. | | | | | |
| FINISH | CUSTOMER: | | | SIZE | DWG. NO. PIJP-SHEET5 | REV |
| | | | | A | | 5 |
| DO NOT SCALE DRAWING | | | | SCALE: 1:3 | WEIGHT: | SHEET 5 OF 5 |